



Bronze Close, Nuneaton, CV11 4YD

**SHELDON
BOSLEY
KNIGHT**

LAND AND
PROPERTY
PROFESSIONALS

Property Description

*** RENTAL INVESTMENT / FIRST TIME PURCHASE OR DOWNSIZER ? *** Here is a great opportunity to acquire this modern semi detached house situated on the popular Maple Park development and occupying a good sized plot with ample parking and good sized rear garden.

The property would make a great investment with rentals achieved nearby in excess of £800pcm, the first time or downsizer and benefits from gas fired central heating, upvc double glazing, upvc fascias, no upward chain and an early viewing is recommended.

Briefly comprising: entrance hall, lounge, full width dining kitchen, landing, two well proportioned bedrooms and bathroom. Driveway for three vehicles, lawned foregarden and good sized rear garden. EPC RATING C.





Key Features

- Modern semi detached home
- Popular and sought after location
- Excellent first time / rental investment
- Gas central heating & Upvc Dbl Glazing
- Two bedrooms & bathroom
- Three car driveway & gardens
- No upward chain / viewing recommended
- EPC RATING C

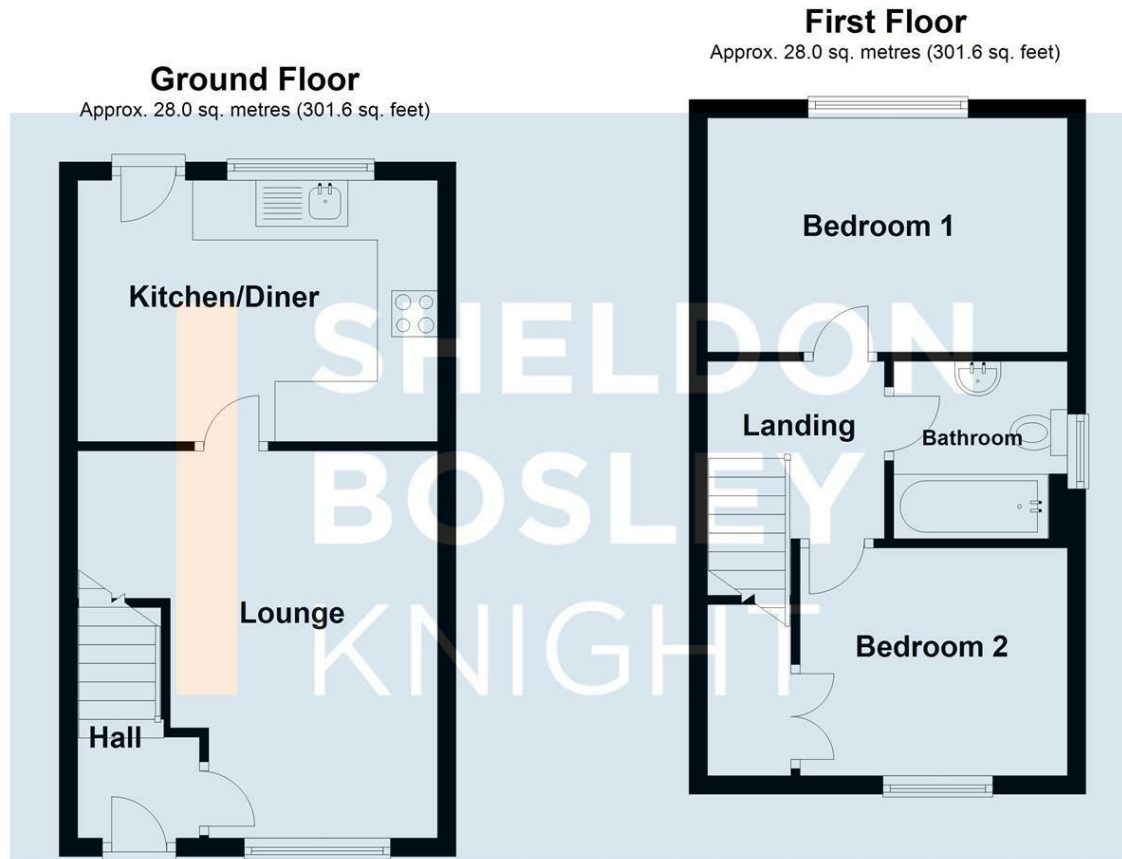
**Offers Over
£190,000**

EPC Rating - C

Tenure - Freehold

Council Tax Band - B

Local Authority -
NBBC



Ground Floor
Approx. 28.0 sq. metres (301.6 sq. feet)

First Floor
Approx. 28.0 sq. metres (301.6 sq. feet)

Total area: approx. 56.0 sq. metres (603.1 sq. feet)

All efforts have been made to ensure that the measurements on this floorplan are accurate however these are for guidance purposes only.
Plan produced using PlanUp.

We routinely refer clients to both our recommended Legal Firm and a panel of Financial Services Providers. It is your decision whether you choose to deal with these companies. In making that decision, you should know that we receive a referral fee