



The Raywoods, Nuneaton, CV10 7LU

**SHELDON
BOSLEY
KNIGHT**

LAND AND
PROPERTY
PROFESSIONALS

Property Description

*** RUSH TO THE RAYWOODS ! ***

Here is a modern link detached bungalow which is set nicely back from the road with a deep frontage providing ample motor vehicle parking and is offered for sale with no upward chain.

The bungalow offers well planned accommodation with warm air central heating system, upvc double glazing and whilst requiring some updating and improvement is pleasantly situated upon the popular Glendale estate which is ideal for easy access into the town and has ample local amenities nearby.

Briefly comprising. Side hall, rear lounge, refitted kitchen, two bedrooms with built in wardrobes and shower room. Driveway for several vehicles, attached garage and westerly facing rear garden. EPC RATING TBC.





Key Features

- Modern link-detached bungalow
- Popular and established location
- Great local amenities & attractions
- Warm air heating & Dbl glazing
- Two bedrooms & shower room
- Large driveway, garage & westerly rear garden
- No upward chain
- EPC RATING TBC

£232,500

EPC Rating -

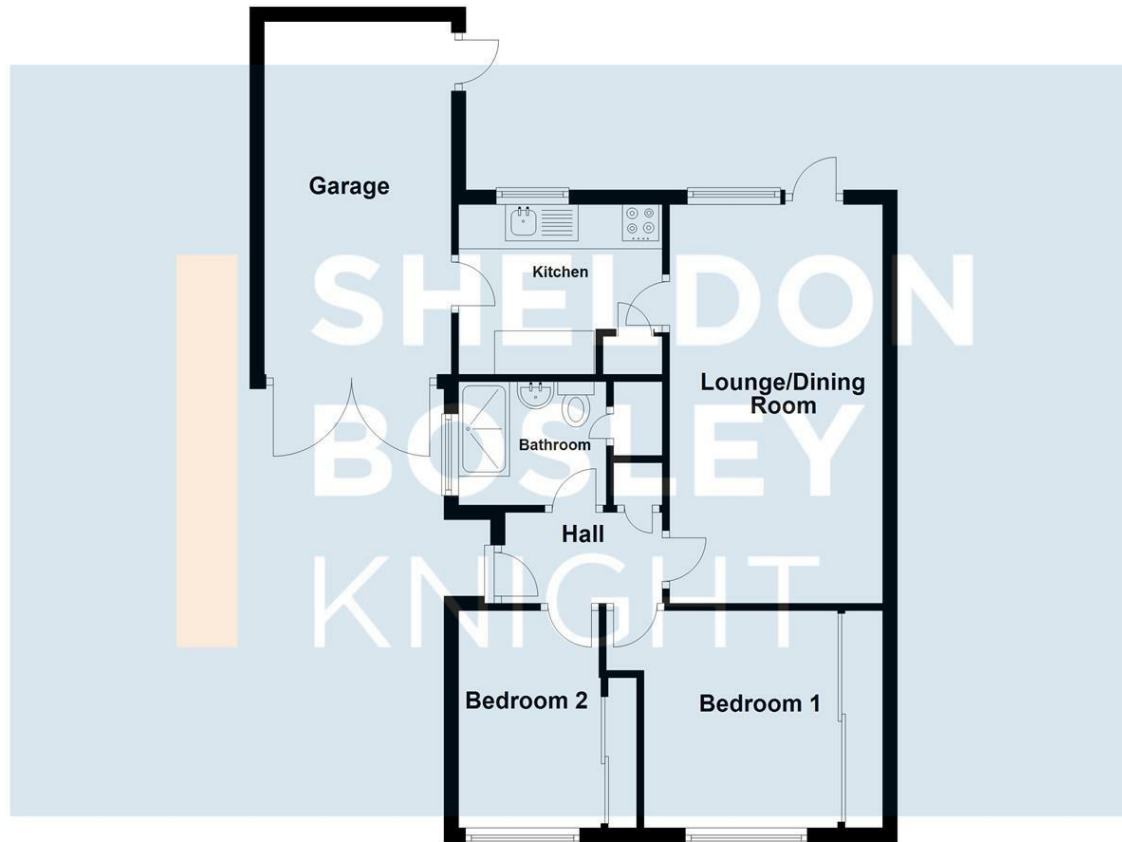
Tenure - Freehold

Council Tax Band - B

Local Authority -
NBBC

Ground Floor

Approx. 61.7 sq. metres (664.0 sq. feet)



Total area: approx. 61.7 sq. metres (664.0 sq. feet)

All efforts have been made to ensure that the measurements on this floorplan are accurate however these are for guidance purposes only.
Plan produced using PlanUp.

We routinely refer clients to both our recommended Legal Firm and a panel of Financial Services Providers. It is your decision whether you choose to deal with these companies. In making that decision, you should know that we receive a referral fee