



Lower Farm Way, Nuneaton, CV10 0FD

**SHELDON
BOSLEY
KNIGHT**

LAND AND
PROPERTY
PROFESSIONALS

Property Description

*** WOW - CHECK OUT THE MEDIA WALL AND STUNNING MASTER BEDROOM *** This is a modern semi detached residence built by Taylor Wimpey Homes situated on this popular new development just off Weddington Road which was built to an excellent specification in 2017 and an early viewing is essential.

The property offers comfortable and well planned family accommodation split over three floors with gas fired central heating, upvc double glazing, twin parking spots to the rear and is presented in excellent order throughout with the wow factors being the fantastic 'media wall' to the lounge and stunning top floor master bedroom with ensuite shower room.

Briefly comprising: through hall, guests cloakroom, lounge with media wall and patio doors to the rear garden, breakfast kitchen, first floor landing, two bedrooms (second bedroom used as dressing room), second floor master bedroom and ensuite shower room. Loose stone / bark foregarden, neat rear garden and parking to the rear. EPC RATING B.

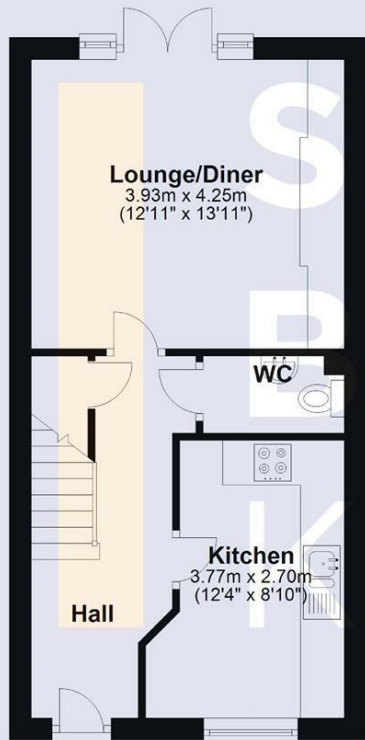






Ground Floor

Approx. 38.0 sq. metres (409.3 sq. feet)



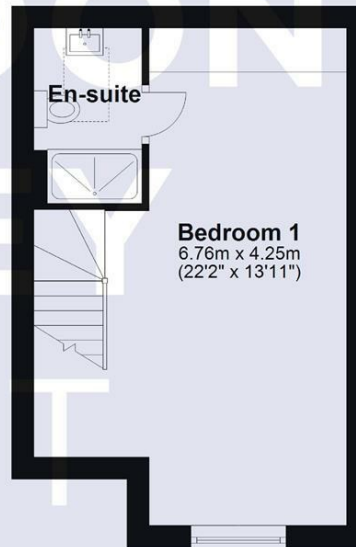
First Floor

Approx. 38.0 sq. metres (409.3 sq. feet)



Second Floor

Approx. 27.3 sq. metres (293.6 sq. feet)



Total area: approx. 103.3 sq. metres (1112.2 sq. feet)

DISCLAIMER - Floor plans shown are for general guidance only. Whilst every attempt has been made to ensure that the floorplan measurements are as accurate as possible, they are for illustrative purposes only.

Key Features

- Taylor Wimpey built semi detached home
- Sought after new development
- Great road links and nearby amenities / walks
- Gas heating & Dbl Glazing
- Well equipped kitchen & Lounge with feature 'media wall'
- Master bedroom suite with ensuite shower room
- Twin parking at rear & Gardens
- EPC RATING B

**Offers Over
£275,000**

EPC Rating - B

Tenure - Freehold

Council Tax Band - D

Local Authority -
NBBC