



**Martins Road, Bedworth, CV12 0DR**

**SHELDON  
BOSLEY  
KNIGHT**

LAND AND  
PROPERTY  
PROFESSIONALS



# Property Description

\*\*\*BUNGALOW READY TO GO\*\*\*

We are delighted to present this two bedroom, semi-detached bungalow for sale. Situated on Martins Road, Bedworth which is close by to local shops and amenities. Also providing easy access to Bedworth Town and Coventry.

Briefly comprising; entrance hall, lounge, kitchen/dining room, utility, two bedrooms and bathroom. The exterior grants off road parking to the front, side access to the garage and rear garden.

With gas fired central heating and double glazed windows, this home is ready for your furniture! Call us now for more information or to book a viewing. Council Tax Band B & EPC Rating D







## Key Features

- Semi-Detached Bungalow
- Two Bedrooms
- Recently Rennovated
- Off Road Parking
- Garage
- Close By To Local Amenities
- Great Location
- Council Tax Band B & EPC Rating D

**Offers Over  
£250,000**

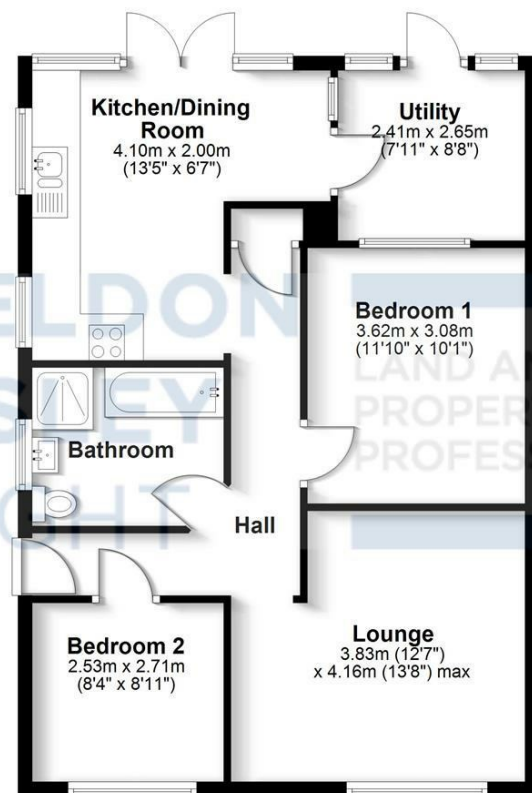






### Ground Floor

Approx. 69.6 sq. metres (749.1 sq. feet)



Total area: approx. 69.6 sq. metres (749.1 sq. feet)

All efforts have been made to ensure the measurements are accurate on this floor plan, however these are for guidance purposes only.  
Plan produced using PlanUp.



EPC Rating - D

Tenure - Freehold

Council Tax Band - B

Local Authority  
NBBC





We routinely refer clients to both our recommended legal firm and a panel of financial services providers. It is your decision whether you choose to deal with these companies. In making that decision, you should know that we receive a referral fee.

**SHELDON  
BOSLEY  
KNIGHT**

LAND AND  
PROPERTY  
PROFESSIONALS