



Mount Pleasant Road, Bedworth, CV12 8ER

**SHELDON
BOSLEY
KNIGHT**

LAND AND
PROPERTY
PROFESSIONALS

Property Description

A PLEASANT SURPRISE

We are delighted to present this three bedroom, semi-detached home on mount pleasant road. Situated close by to Bedworth town centre, bus routes, shops and schools this home is ideally positioned for all walks of life.

Briefly comprising; Entrance hall, lounge, dining room, kitchen, three bedrooms and family bathroom. There is additionally an integral garage with utility space and downstairs W/C. The exterior grants off road parking and lawn to the front and lawn, vegetable and flower patches with patio space to the rear.

With gas fired central heating via combi boiler and double glazed windows, this home is ready for your furniture. Call us now for more information. COUNCIL TAX BAND B & EPC RATING C





Key Features

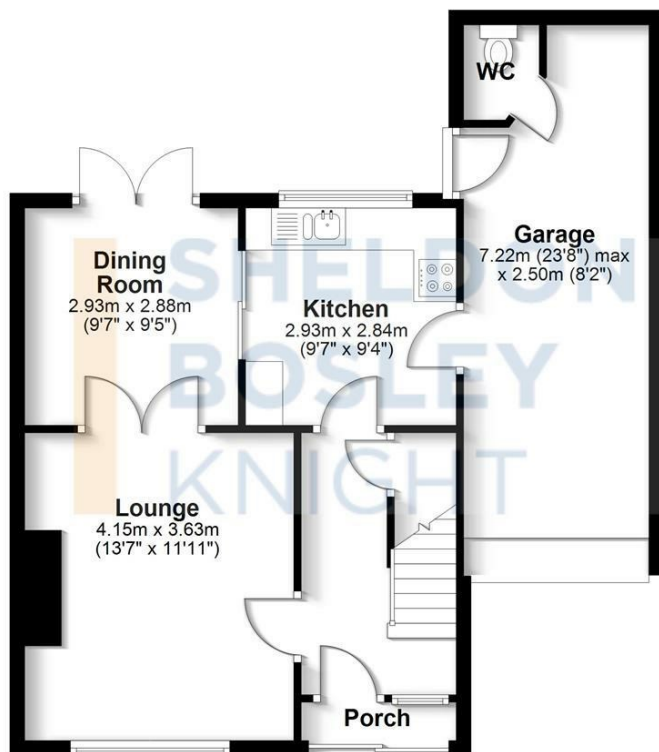
- THREE BEDROOM SEMI DETACHED HOME
- DOUBLE GLAZING & GAS CENTRAL HEATING
- LOUNGE - DINING ROOM - KITCHEN
- GENEROUS BEDROOMS
- FAMILY BATHROOM
- GARAGE & DRIVEWAY
- WELL PRESENTED THROUGHOUT
- FREEHOLD - COUNCIL TAX BAND B - EPC C

**Offers Over
£240,000**



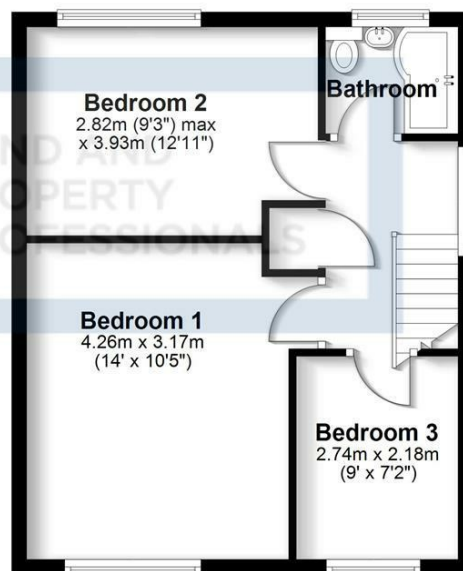
Ground Floor

Approx. 60.3 sq. metres (649.2 sq. feet)



First Floor

Approx. 41.8 sq. metres (449.8 sq. feet)



Total area: approx. 102.1 sq. metres (1099.0 sq. feet)

All efforts have been made to ensure the measurements are accurate on this floor plan, however these are for guidance purposes only.
Plan produced using PlanUp.



EPC Rating - C

Tenure - Freehold

Council Tax Band - B

Local Authority
NBBC



We routinely refer clients to both our recommended legal firm and a panel of financial services providers. It is your decision whether you choose to deal with these companies. In making that decision, you should know that we receive a referral fee.

**SHELDON
BOSLEY
KNIGHT**

LAND AND
PROPERTY
PROFESSIONALS