



Derwent Road, Bedworth, CV12 8RT

**SHELDON
BOSLEY
KNIGHT**

LAND AND
PROPERTY
PROFESSIONALS

Property Description

Sheldon Bosley Knight are delighted to welcome for sale this immaculate extended three bedroom home on Derwent Road, Bedworth, situated on a popular estate within walking distance of the town centre and opposite The Canons primary school, benefitting from gas central heating and double glazing throughout. In brief the home comprises of a porch, entrance hall, lounge, utility room, downstairs WC, extended kitchen and dining room. To the first floor there are three generous bedrooms and a family bathroom. To front is a large driveway for numerous of vehicles and to a rear a private non over looked garden also offered a detached garage. This property must be viewed with viewings strictly via the agent. COUNCIL TAX BAND C - EPC C

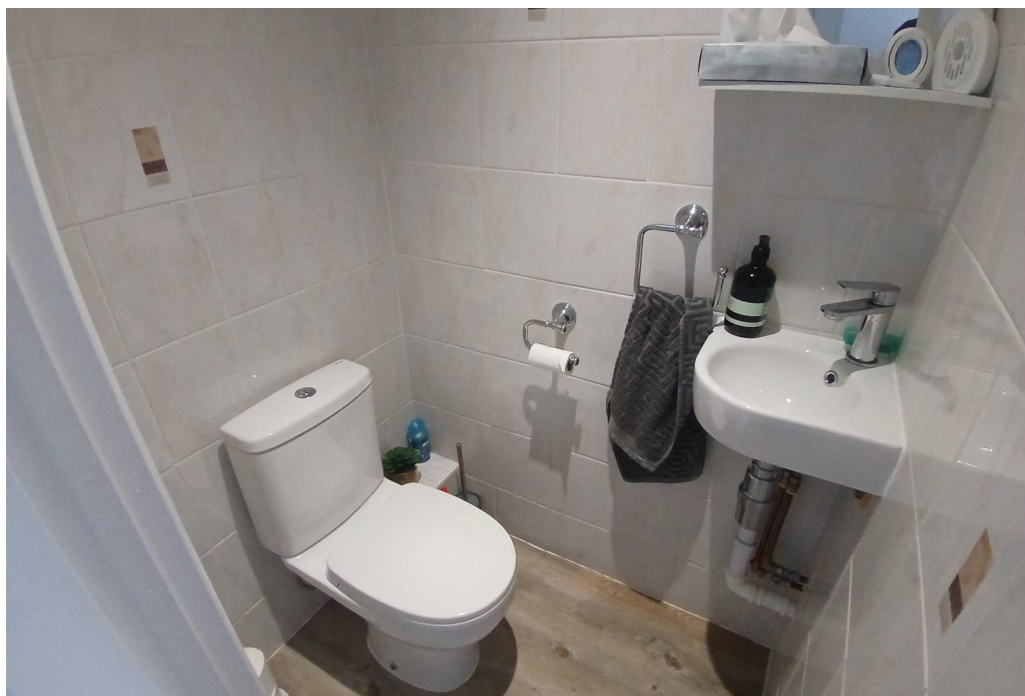


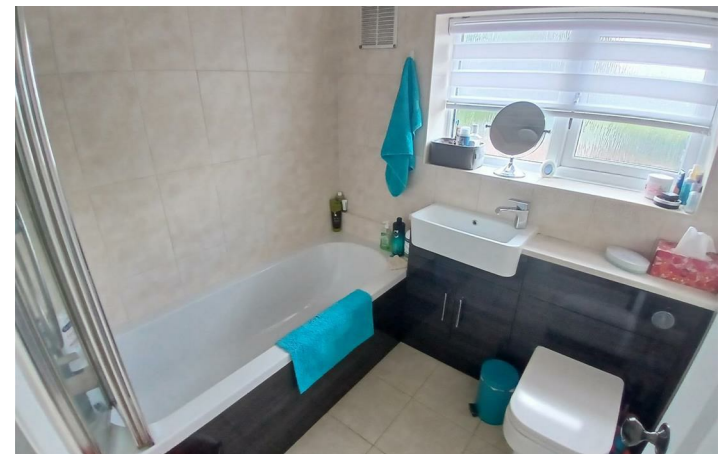
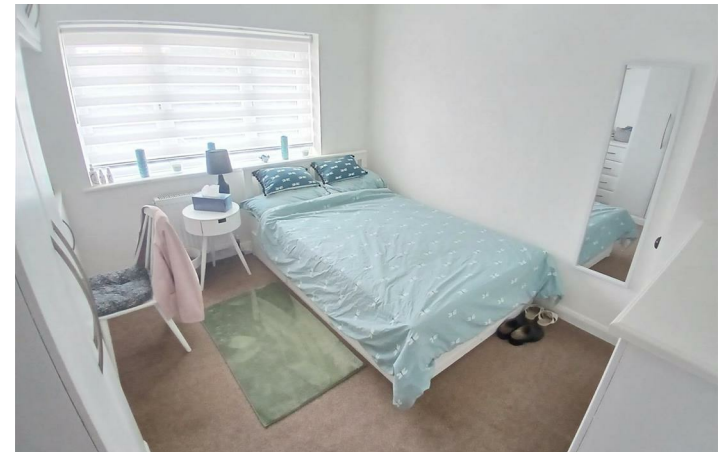


Key Features

- EXTENDED THREE BEDROOM SEMI DETACHED HOME
- GAS CENTRAL HEATING & DOUBLE GLAZING
- GARAGE & DRIVEWAY
- LOUNGE - DOWNSTAIRS WC - UTILITY ROOM
- EXTENDED KITCHEN - DINING ROOM
- FAMILY BATHROOM
- THE CANONS PRIMARY SCHOOL LOCATION
- FREEHOLD - COUNCIL TAX BAND C - EPC C

£280,000





EPC Rating - C

Tenure - Freehold

Council Tax Band - C

Local Authority
NBBC



We routinely refer clients to both our recommended legal firm and a panel of financial services providers. It is your decision whether you choose to deal with these companies. In making that decision, you should know that we receive a referral fee.

**SHELDON
BOSLEY
KNIGHT**

LAND AND
PROPERTY
PROFESSIONALS