



Gallagher Road, Bedworth, CV12 8SB

**SHELDON
BOSLEY
KNIGHT**

LAND AND
PROPERTY
PROFESSIONALS

Property Description

MODERN SEMI-DETACHED HOME

We are delighted to present this stunning semi-detached family home. Situated on Gallagher Road, Bedworth. Close by to the Canons Primary School, with easy access to Bedworth Town, Coventry and the A444. This property has been refurbished to a high standard with a large kitchen/diner space along with a conservatory.

Briefly comprising; Entrance hallway, lounge, kitchen/diner, conservatory, three bedrooms and family bathroom. The exterior grants off road parking to the front, side access to the rear garden which has a detached garage, lawn and patio.

With gas fired central heating and double glazed windows with refurbished home is ready for your furniture. Having the kitchen and dining room converted and refurbished into one room creates ample room for entertaining any guests, along with space for the fully built in white goods which provides it with a clean, tidy look. Call us now for more information. COUNCIL TAX BAND C & EPC RATING D



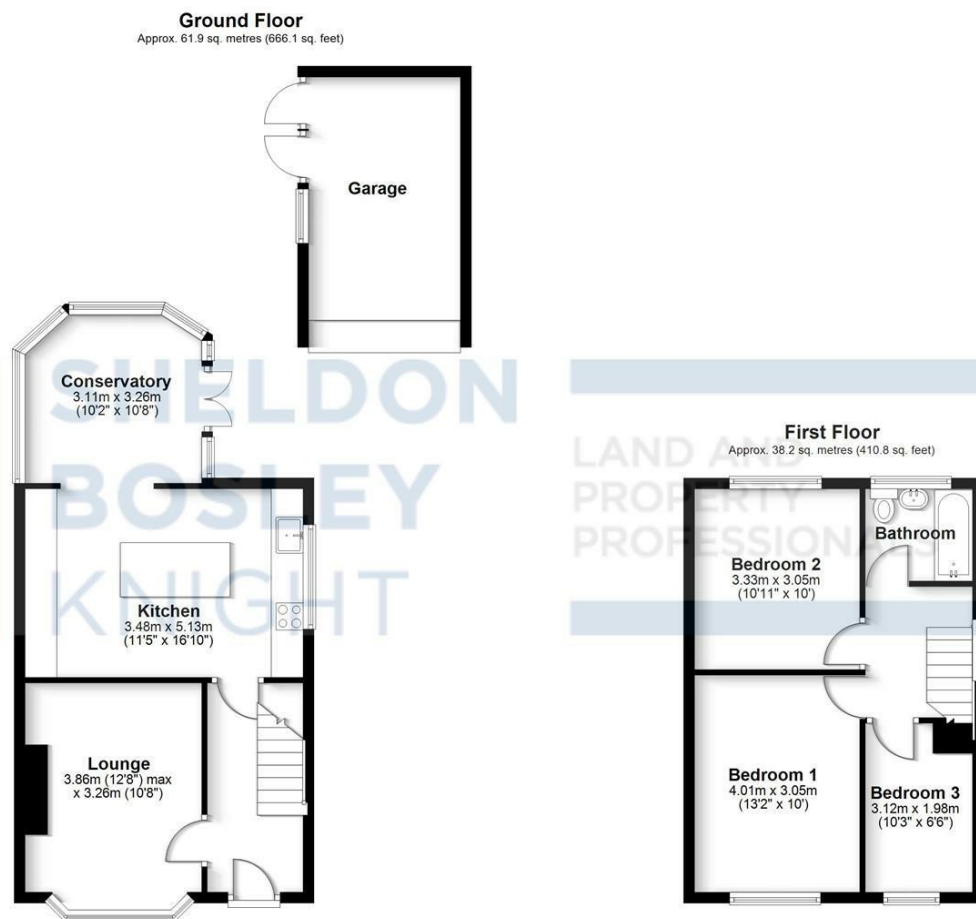


Key Features

- Beautiful Semi-Detached Home
- Three Bedrooms
- Refurbished To A High Standard
- Conservatory
- Off Road Parking & Garage
- Great Transport Links To Bedworth, Coventry & the A444
- Close By To Canon's Primary
- COUNCIL TAX BAND C & EPC RATING TBC

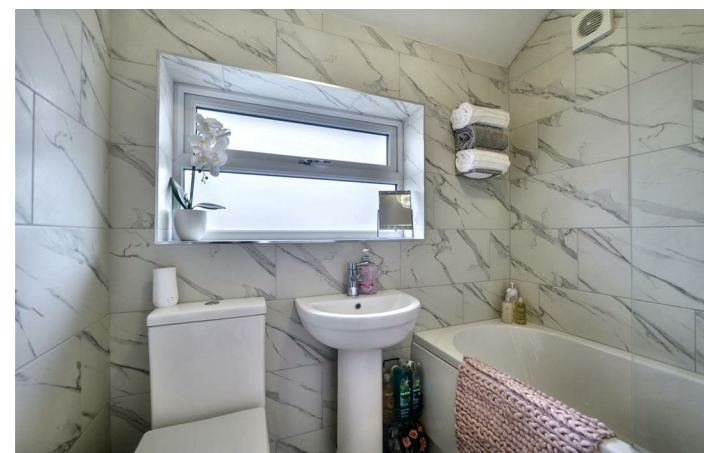
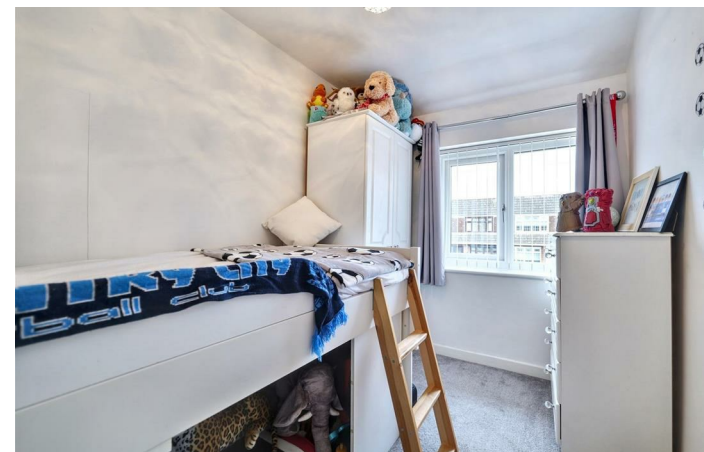
**Offers Over
£270,000**





Total area: approx. 100.1 sq. metres (1077.0 sq. feet)

All efforts have been made to ensure the measurements are accurate on this floor plan, however these are for guidance purposes only.
Plan produced using PlanUp.



EPC Rating - D

Tenure - Freehold

Council Tax Band - C

Local Authority
NBBC



We routinely refer clients to both our recommended legal firm and a panel of financial services providers. It is your decision whether you choose to deal with these companies. In making that decision, you should know that we receive a referral fee.

**SHELDON
BOSLEY
KNIGHT**

LAND AND
PROPERTY
PROFESSIONALS