



The Birches, Bulkington, CV12 9PW

**SHELDON
BOSLEY
KNIGHT**

LAND AND
PROPERTY
PROFESSIONALS

Property Description

QUIET CUL-DE-SAC LOCATION

We are delighted to present for sale this stunning, three bedroom, detached bungalow on The Birches, Bulkington. Situated in a beautiful village setting, on a quiet cul-de-sac with bus routes and roads granting easy access to Bedworth and Nuneaton. This well maintained home is ready for your furniture!

Briefly comprising; Porch, Hallway, Lounge, Conservatory, Kitchen, Bathroom, Bedroom/Dining Room, and two more spacious bedrooms. The exterior provides more than enough parking to the front, along with a garage and side access from both sides to the low maintenance garden with a brick build storage/garden room.

With gas fired central heating, double glazed windows and solar panels making it energy efficient - this home really does need to be seen to be appreciated. Call us now for viewings! COUNCIL TAX BAND D & EPC RATING B



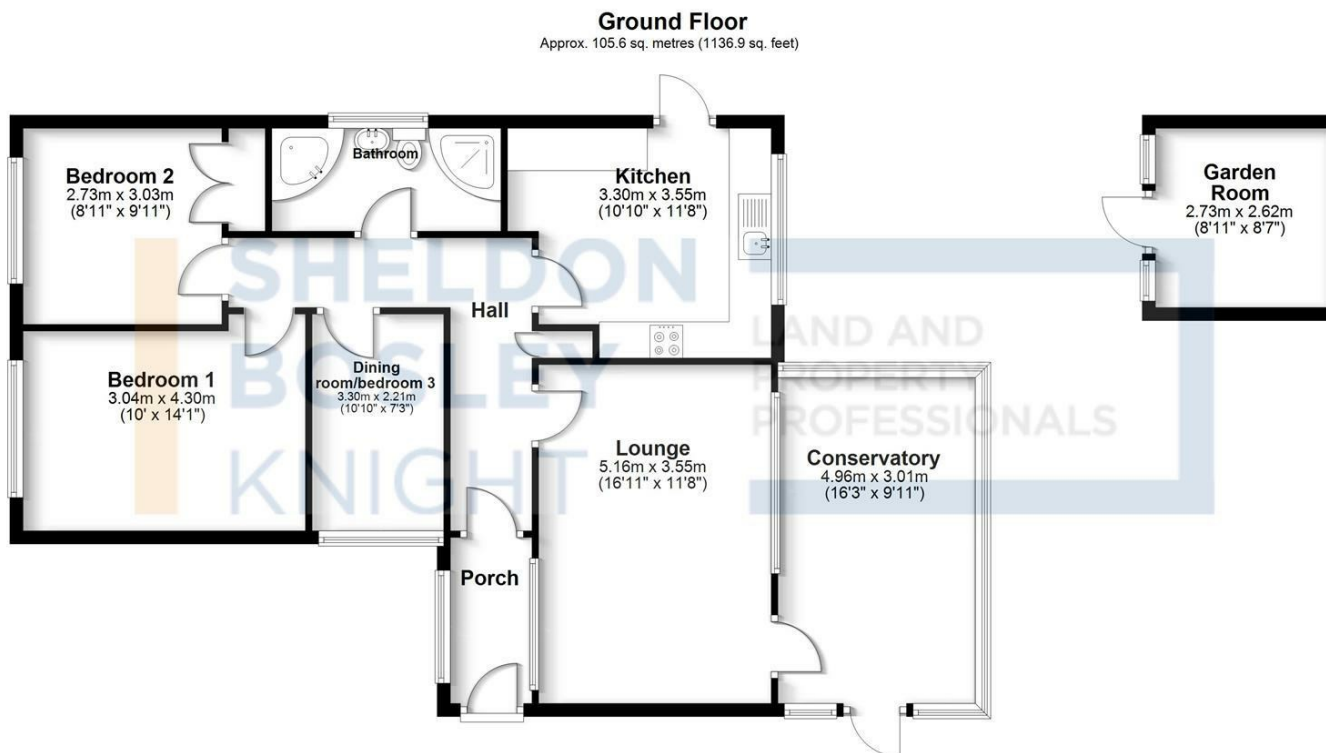


Key Features

- Beautiful Detached Bungalow
- Three Bedrooms
- Good Sized Plot
- Solar Panels
- Off Road Parking & Garage
- Quiet Cul-De-Sac Location
- Sought After Area
- COUNCIL TAX BAND D & EPC RATING B

£367,500





Total area: approx. 105.6 sq. metres (1136.9 sq. feet)

All efforts have been made to ensure the measurements are accurate on this floor plan, however these are for guidance purposes only.
Plan produced using PlanUp.



EPC Rating - B

Tenure - Freehold

Council Tax Band - D

Local Authority
NBBC



We routinely refer clients to both our recommended legal firm and a panel of financial services providers. It is your decision whether you choose to deal with these companies. In making that decision, you should know that we receive a referral fee.

**SHELDON
BOSLEY
KNIGHT**

LAND AND
PROPERTY
PROFESSIONALS