



Mill Farm Park, Bulkington, CV12 9SF

Property Description

TWO BEDROOM PARK HOMEMILL FARM PARK***VIEWS OVER THE CANAL***

We are delighted to present this two bedroom park home for sale on Mill Farm Park! This site is a peaceful over 55's location with stunning views and a great community. Situated in Bulkington, with easy access to Bedworth & Nuneaton, this location is sought after and bound to make a perfect home for you!

Accommodation in brief; entrance porch/conservatory, hallway, kitchen, shower room, lounge, and two bedrooms. complete with outdoor garden space with views over the canal and off road parking.

Also benefiting from UPVC double glazing, gas central heating, allocated parking, generous outdoor space, with rear garden over looking the canal. Pets Allowed, No Dogs. Call us now for more information! Council Tax Band A.

Monthly service charge: £163.45





Key Features

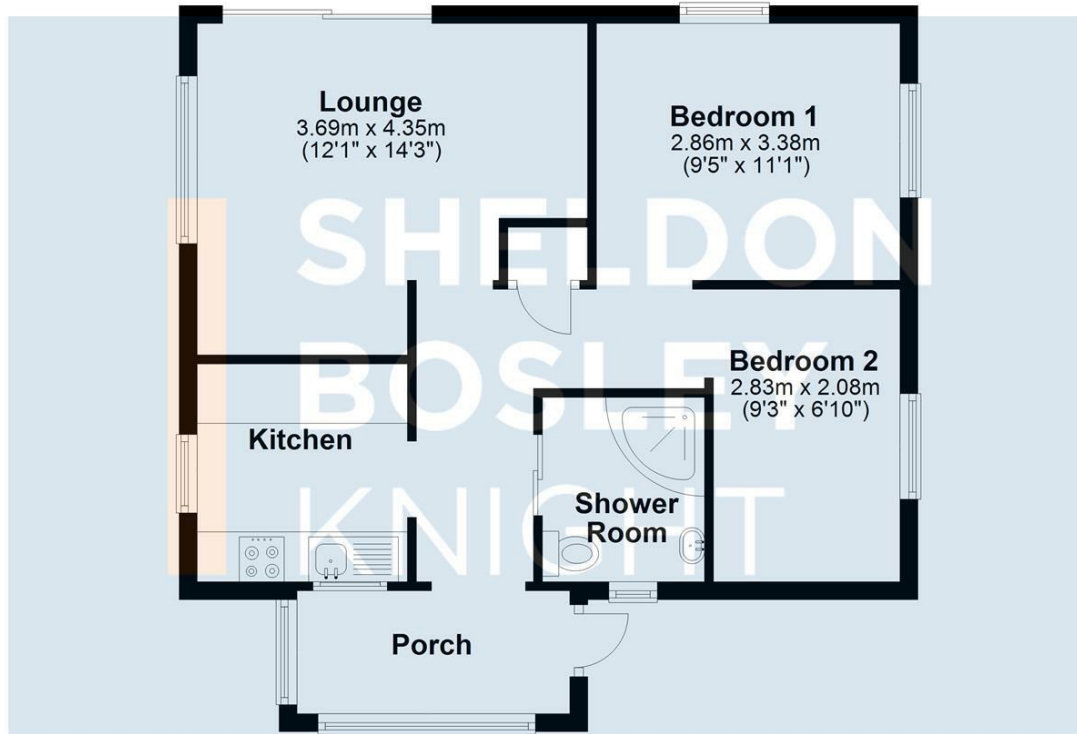
- MILL FARM PARK
- TWO BEDROOM PARK HOME
- STUNNING CANAL & COUNTRYSIDE VIEWS
- SHOWER ROOM & CONSERVATORY
- OVER 55'S
- NO DOGS
- OFF ROAD PARKING
- COUNCIL TAX BAND A

£109,950



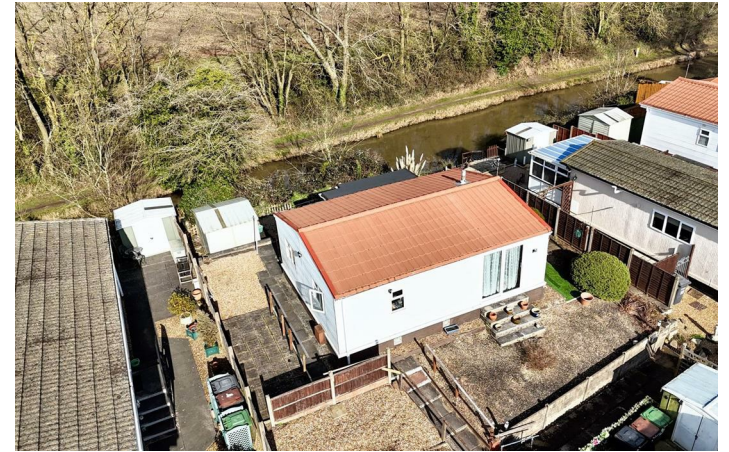
Ground Floor

Approx. 52.3 sq. metres (562.8 sq. feet)



Total area: approx. 52.3 sq. metres (562.8 sq. feet)

All efforts have been made to ensure that the measurements on this floorplan are accurate however these are for guidance puposes only.
Plan produced using PlanUp.



EPC Rating -

Tenure - Leasehold

Council Tax Band - A

Local Authority
NBBC



We routinely refer clients to both our recommended legal firm and a panel of financial services providers. It is your decision whether you choose to deal with these companies. In making that decision, you should know that we receive a referral fee.

**SHELDON
BOSLEY
KNIGHT**

LAND AND
PROPERTY
PROFESSIONALS