



Bulkington Road, Bedworth, CV12 9DG

**SHELDON
BOSLEY
KNIGHT**

LAND AND
PROPERTY
PROFESSIONALS

Property Description

* INVESTORS ONLY * Sheldon Bosley Knights are pleased to offer to market this two bedroom end terrace home on Bulkington Road, Bedworth, within walking distance to the town centre and train station, benefitting from gas central heating and double glazing throughout. In brief the home comprises of an entrance hall, downstairs WC, kitchen and lounge/diner. To the first floor there are two double bedrooms and a bathroom. Fore garden to front and enclosed garden to rear, also offering an allocated parking space. COUNCIL TAX B - EPC C





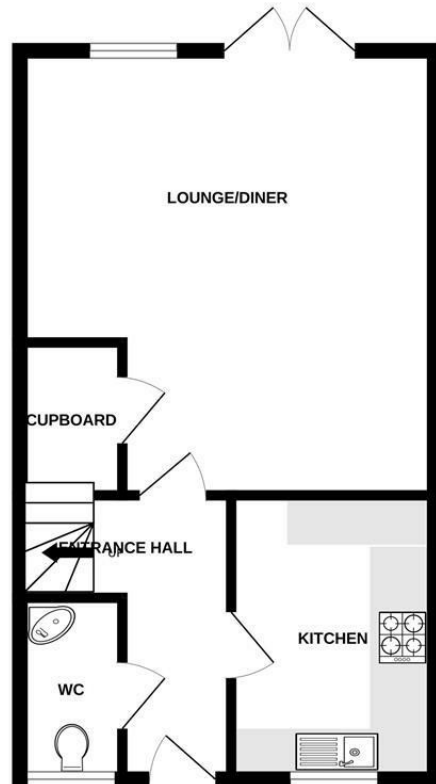
Key Features

- TWO BEDROOM END TERRACE
- INVESTORS ONLY
- ALLOCATED PARKING
- WALKING DISTANCE TO TOWN CENTRE
- WC - LOUNGE/DINER - KITCHEN
- DOUBLE BEDROOMS - BATHROOM
- FREEHOLD - COUNCIL TAX BAND B - EPC C

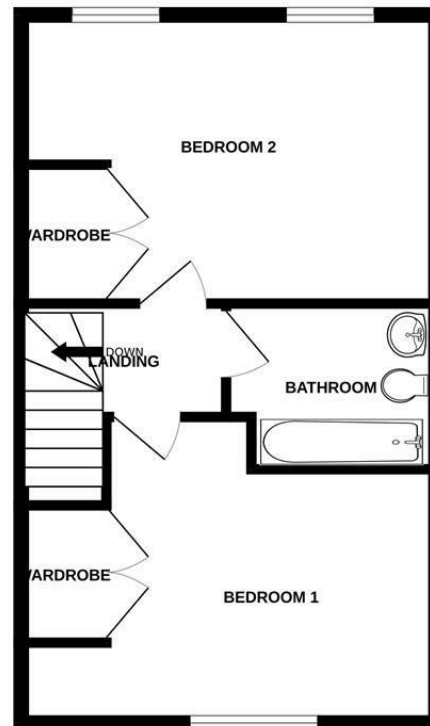
**Offers Over
£160,000**



GROUND FLOOR



1ST FLOOR



This floor plan is not to scale and is for guidance purposes only
Made with Metropix ©2024



EPC Rating - C

Tenure - Freehold

Council Tax Band - B

Local Authority
Nuneaton & Bedworth Borough Council



We routinely refer clients to both our recommended legal firm and a panel of financial services providers. It is your decision whether you choose to deal with these companies. In making that decision, you should know that we receive a referral fee.

**SHELDON
BOSLEY
KNIGHT**

LAND AND
PROPERTY
PROFESSIONALS