





**SHELDON
 BOSLEY
 KNIGHT**

FOR SALE

 024 7631 2379

find us first on


wearethemarket.co.uk

Newdigate Road, Bedworth, CV12 8DE

**SHELDON
 BOSLEY
 KNIGHT**

 LAND AND
 PROPERTY
 PROFESSIONALS

Property Description

NEW TO NEWDIGATE

With great excitement, we present this elegant three-bedroom link-detached family home for sale in Bedworth. It's in a prime position, close to the town centre, transport lines, schools, and numerous other amenities.

Briefly comprising; Entrance Hallway, Lounge/Diner, Kitchen, Three Bedrooms, Bathroom, Garage, Rear Garden and Off Road Parking.

With gas fired central heating and UPVC double glazing, this property will be ideal for first time buyers or families as a home. Complete with a stylish modern feel, this could be the one for you! EPC RATING D



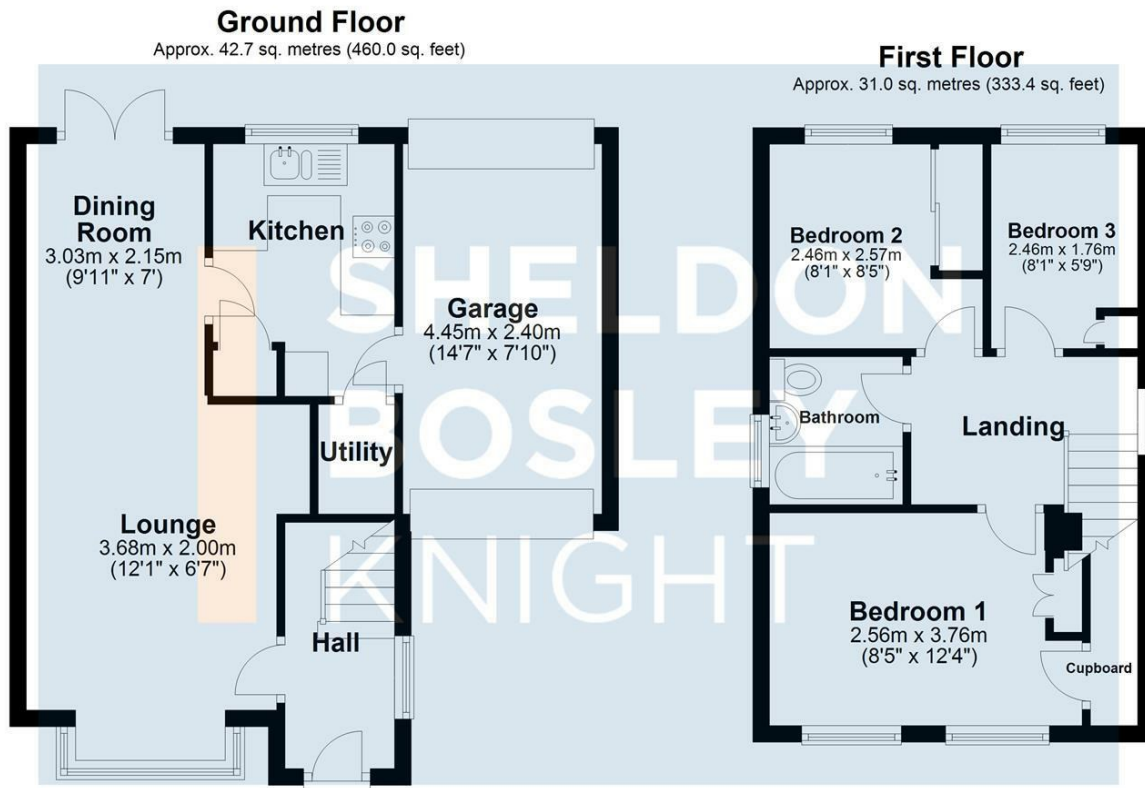


Key Features

- Link-Detached Modern Family Home
- Three Bedrooms
- Off Road Parking
- Garage
- Close By To Local Schools
- Close By To Local Amenities
- Close By To Bus Routes
- EPC RATING D

£260,000





Total area: approx. 73.7 sq. metres (793.4 sq. feet)

All efforts have been made to ensure that the measurements on this floorplan are accurate however these are for guidance purposes only.
Plan produced using PlanUp.



EPC Rating - D

Tenure - Freehold

Council Tax Band - B

Local Authority
NBBC



We routinely refer clients to both our recommended legal firm and a panel of financial services providers. It is your decision whether you choose to deal with these companies. In making that decision, you should know that we receive a referral fee.

**SHELDON
BOSLEY
KNIGHT**

LAND AND
PROPERTY
PROFESSIONALS