



Lawrence Road, Coventry, CV7 9BW

**SHELDON  
BOSLEY  
KNIGHT**

LAND AND  
PROPERTY  
PROFESSIONALS

# Property Description

**\*\*SPACIOUS END TERRACE HOME WITH NO CHAIN\*\*** In brief - Through hall, lounge, kitchen, separate dining room, three first floor bedrooms, bathroom, gardens to front and rear, electric storage heaters, double glazed, updating suggested.



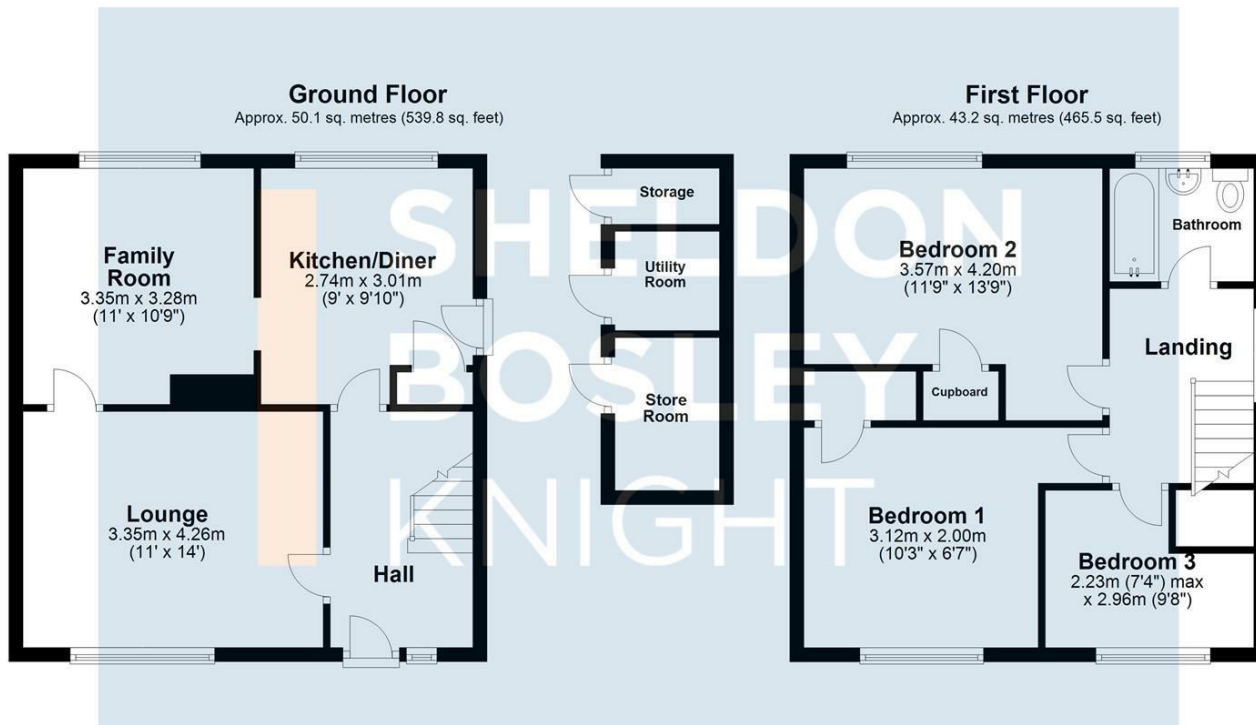


## Key Features

- SPACIOUS END TERRACE HOME WITH NO CHAIN
- GENEROUS GARDENS
- THROUGH HALL/LOUNGE/SEPARATE DINING ROOM
- KITCHEN
- THREE FIRST FLOOR BEDROOMS PLUS BATHROOM
- ELECTRIC STORAGE HEATERS/DOUBLE GLAZED
- TAX BAND A
- EPC COMMISSIONED

**£185,000**





Total area: approx. 93.4 sq. metres (1005.3 sq. feet)

All efforts have been made to ensure that the measurements on this floorplan are accurate however these are for guidance purposes only.  
Plan produced using PlanUp.



EPC Rating -

Tenure - Freehold

Council Tax Band - A

Local Authority  
Nuneaton & Bedworth



We routinely refer clients to both our recommended legal firm and a panel of financial services providers. It is your decision whether you choose to deal with these companies. In making that decision, you should know that we receive a referral fee.

**SHELDON  
BOSLEY  
KNIGHT**

LAND AND  
PROPERTY  
PROFESSIONALS