



Lymington Drive, Coventry, CV6 6TA

**SHELDON  
BOSLEY  
KNIGHT**

LAND AND  
PROPERTY  
PROFESSIONALS

# Property Description

\*\*\*VIEWINGS TO COMMENCE FROM THE 8TH AUGUST\*\*\*POPULAR RESIDENTIAL AREA IN LONGFORD\*\*\*THREE BEDROOM END TERRACED\*\*\* Accommodation in brief; entrance hall, cloakroom WC, spacious living room, separate dining room, fitted kitchen, three bedrooms, and family bathroom. Also benefiting from UPVC double glazing, gas central heating, shared driveway for two vehicles, and well maintained gardens. EPC Commissioned. Council Tax Banding C.





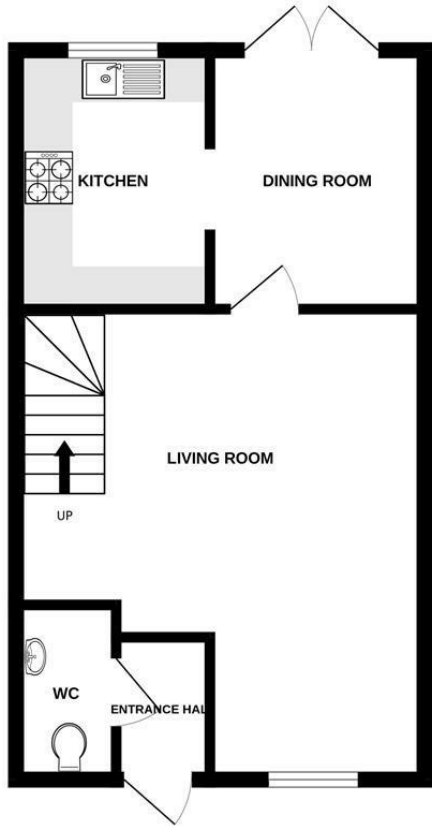
## Key Features

- Well Presented End Terraced
- Three Bedrooms & Family Bathroom
- Spacious Living Room
- Separate Dining Room
- Fitted Kitchen & Cloakroom
- Shared Driveway For Two Vehicles
- Well Maintained Gardens
- EPC Commissioned Council Tax Banding C

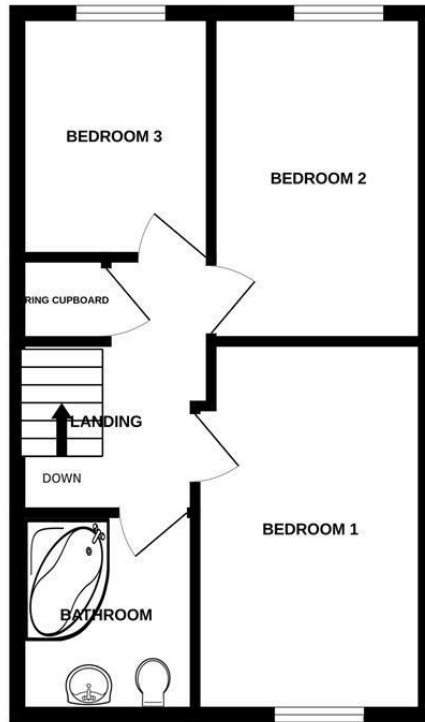
**£225,000**



GROUND FLOOR



1ST FLOOR



EPC Rating -

Tenure - Freehold

Council Tax Band - C

Local Authority  
Nuneaton & Bedworth Borough Council

This floor plan is not to scale and is for guidance purposes only  
Made with Metroplan ©2024



We routinely refer clients to both our recommended legal firm and a panel of financial services providers. It is your decision whether you choose to deal with these companies. In making that decision, you should know that we receive a referral fee.

**SHELDON  
BOSLEY  
KNIGHT**

LAND AND  
PROPERTY  
PROFESSIONALS