



Coney Lane, Longford, CV6 6EF

**SHELDON  
BOSLEY  
KNIGHT**

LAND AND  
PROPERTY  
PROFESSIONALS



# Property Description

Sheldon Bosley Knight are pleased to offer for sale this spacious two bedroom first floor apartment at Coney Lane, Longford, Coventry. Accommodation in brief; communal ground floor entrance, hallway, two bedrooms, bathroom, fitted kitchen, and spacious lounge/diner. Also benefiting from UPVC double glazing, electric heating, allocated parking, and views over the canal. EPC Rating B. Council Tax Banding B.





## Key Features

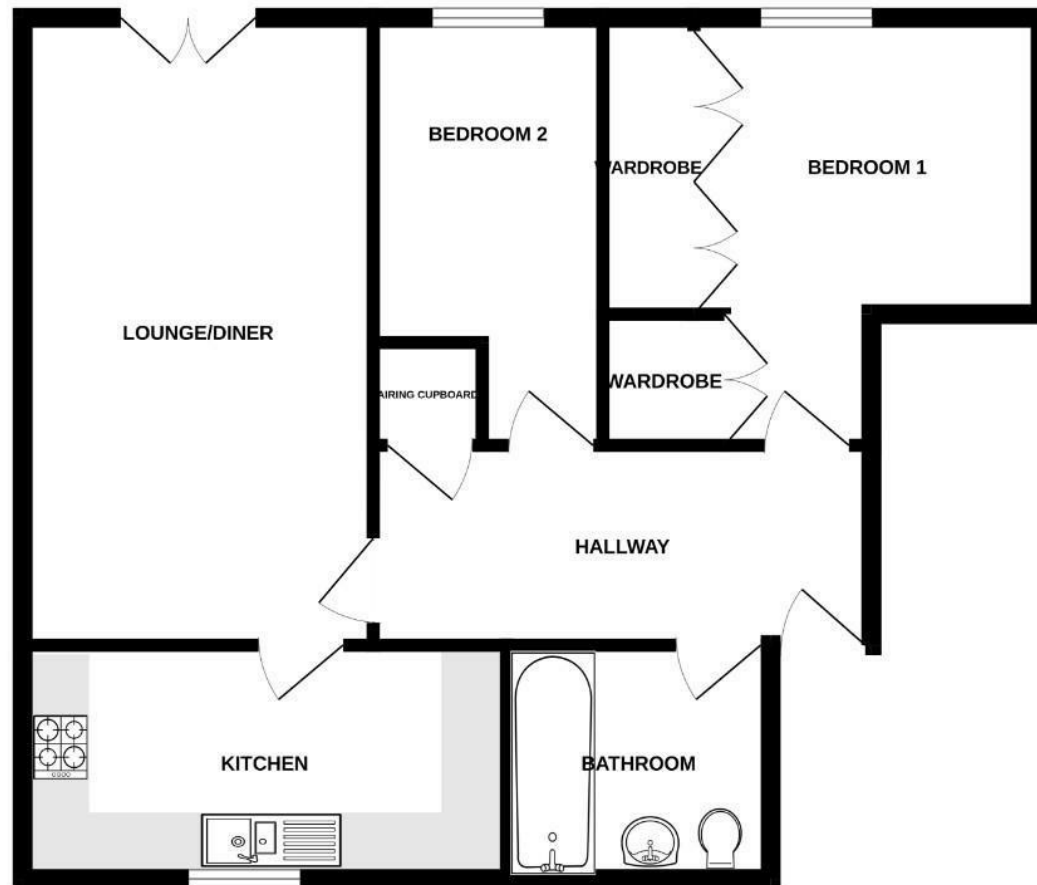
- Spacious First Floor Flat
- Two Bedrooms & Bathroom
- Lounge Diner with Juliet Balcony
- Fitted Kitchen
- Allocated Parking
- Views Over The Canal
- EPC Rating B Council Tax Banding B

**£140,000**





## GROUND FLOOR



This floor plan is not to scale and is for guidance purposes only.  
Made with Metroplan ©2024



EPC Rating - B

Tenure - Leasehold

Council Tax Band - B

Local Authority  
Nuneaton & Bedworth Borough Council





We routinely refer clients to both our recommended legal firm and a panel of financial services providers. It is your decision whether you choose to deal with these companies. In making that decision, you should know that we receive a referral fee.

**SHELDON  
BOSLEY  
KNIGHT**

LAND AND  
PROPERTY  
PROFESSIONALS