



Coopers Meadow, Coventry, CV7 8RG

**SHELDON  
BOSLEY  
KNIGHT**

LAND AND  
PROPERTY  
PROFESSIONALS

# Property Description

\*\*\*A great opportunity to acquire this beautifully presented, two bedroom ground floor apartment situated in the sought after residential location of Keresley End.\*\*\* The property is advertised with no onward chain and is perfect for a first time buyer or investor. The accommodation on offer comprises entrance hallway, lounge/diner with French doors opening out to the front of the property, newly fitted kitchen with oven and hob, two double bedrooms with the principle bedroom containing an en-suite shower room and a separate family bathroom with bath. Externally the property boasts communal gardens and a designated parking space. Further benefits include double glazing and entrance via intercom. EPC Rating C. Council Tax Banding A. Current Service charge as at 03/06/24 £1350 p/a.



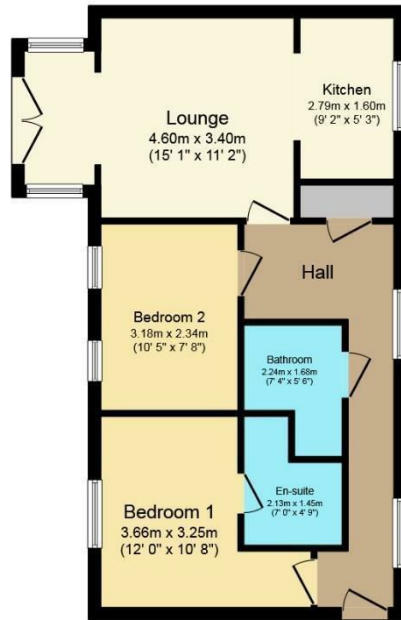


## Key Features

- Ground Floor Apartment
- Two Double Bedrooms
- Lounge/Diner with French Doors
- Newly Fitted Kitchen
- Family Bathroom
- En-Suite Shower Room
- Allocated Parking Space
- Current Service charge as at 03/06/24 £1350 p/a
- Lease Remaining 139
- Council Tax - A EPC Rating C

**£129,950**





### Floor Plan

Floor area 53.0 sq.m. (571 sq.ft.) approx

Total floor area 53.0 sq.m. (571 sq.ft.) approx

This Floor Plan is for illustration purposes only and may not be representative of the property. The position and size of doors, windows and other features are approximate. Unauthorized reproduction prohibited. © PropertyBOX



EPC Rating - C

Tenure - Leasehold

Council Tax Band - A

Local Authority  
Coventry City Council



We routinely refer clients to both our recommended legal firm and a panel of financial services providers. It is your decision whether you choose to deal with these companies. In making that decision, you should know that we receive a referral fee.

**SHELDON  
BOSLEY  
KNIGHT**

LAND AND  
PROPERTY  
PROFESSIONALS