



Frances Crescent, Bedworth, CV12 8EN

**SHELDON
BOSLEY
KNIGHT**

LAND AND
PROPERTY
PROFESSIONALS

Property Description

THREE BEDROOM EXTENDED DETACHED BUNGALOWNO CHAIN*****LOVELY LOCATION CLOSE TO BEDWORTH TOWN CENTRE***DOUBLE GARAGE***PRIVATE GARDENS***
Accommodation in brief; entrance hall, kitchen/breakfast room, utility room, cloakroom WC, three bedrooms, including master with en-suite, L shaped lounge/diner, and bathroom. Also benefiting from UPVC double glazing, gas central heating, driveway and double garage, lean to, private gardens, and generous work shop. EPC Rating D. Council tax band D





Key Features

- Detached Bungalow With No Chain
- Three Bedrooms
- Double Garage & Workshop
- Private Gardens
- Lounge Diner
- Kitchen Breakfast Room & Utility
- Superb Location
- EPC Rating D
- Tax Band D
- Gas Fired Heating /Double Glazed

Asking Price
£360,000

*****THREE BEDROOM EXTENDED DETACHED BUNGALOW***LOVELY LOCATION CLOSE TO BEDWORTH TOWN CENTRE***DOUBLE GARAGE***PRIVATE GARDENS*** Accommodation in brief; entrance hall, kitchen/breakfast room, utility room, cloakroom WC, three bedrooms, including master with en-suite, L shaped lounge/diner, and bathroom. Also benefiting from UPVC double glazing, gas central heating, driveway and double garage, lean to, private gardens, and generous work shop. EPC Rating D.**

Entrance Hall

Kitchen Breakfast Room

17'2" x 9'4"

Utility Room

16'8" x 7'2"

Master Bedroom

14'8" x 10'8"

En-Suite

Bedroom Two

15'10" x 10'7"

Bedroom Three

13'1" x 8'5"

Bathroom

Lounge Diner

12'5" x 15'3" + 18'3" x 9'6"

Lean To

19'5" x 7'2"

Double Garage

18'8" x 17'6"

Work Shop

19'1" x 13'10"

Private Gardens

General Information

TENURE: we understand from the vendors that the property is freehold with vacant possession on completion.

SERVICES: Hawkins have not tested any apparatus, equipment, fittings, etc, or services to this property, so cannot confirm they are in working order or fit for the purpose. A buyer is recommended to obtain confirmation from their Surveyor or Solicitor.

FIXTURES AND FITTINGS: only those as mentioned in these details will be included in the sale.

MEASUREMENTS: the measurements provided are given as a general guide only and are all approximate.

VIEWING: by prior appointment through the Sole Agents.

Disclaimer

Please note these property particulars are in draft format only and have not been checked by the vendor/occupier.

AGENTS NOTE

The property has recently under gone an insurance claim regarding the removal of two nearby trees and the lining of drains .This claim has been settled and more details are available upon request

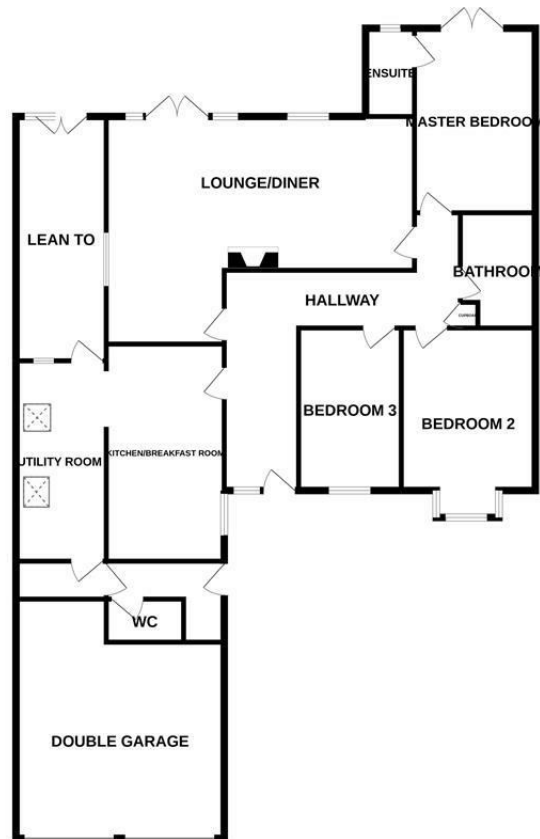




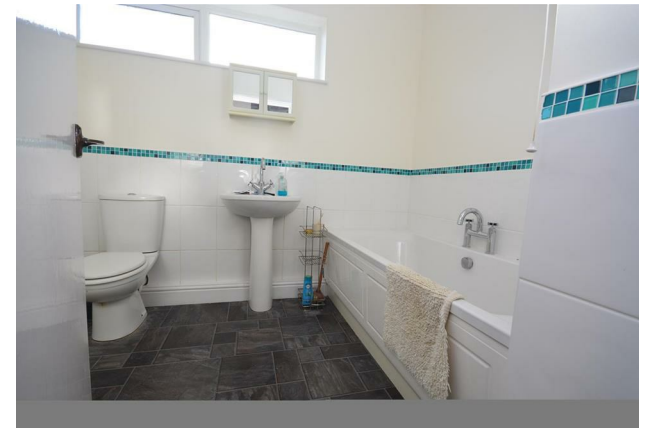


Floorplan

GROUND FLOOR



This floor plan is not to scale and is for guidance purposes only.
Made with Metroplan ©2022



EPC Rating - D

Tenure - Freehold

Council Tax Band - D

Local Authority
NUNEATON AND BEDWORTH

Our Testimonials

Excellent sales team. Chloe, Christian and Leanne supported me throughout a difficult sale and at a very competitive fee. They really know their stuff and I wouldn't hesitate to recommend SBK Evesham. Thank you!

Louise Orchard

Fantastic and easy experience. Nothing was too much to ask and the team were incredible in providing support and reassurance in our first move. Everything was communicated to us professionally and efficiently. Massive thanks to the team for making this move possible.

Anna Stoumann

We found our dream home and needed to sell our house to make an offer. Andrew and the team at Sheldon Bosley knight Leamington were fantastic. They managed to value our home, got photos and floor plans sorted, advertised, completed viewings and we had an above asking price offer accepted in one and a half weeks from first contacting them!! Communication from both Andrew, Sophie and the team plus through their online portal was great throughout. Honestly couldn't have asked for more.

Charlie Foley

Both Amy and Amelia were incredibly helpful and proactive throughout the purchase of our property. The commitment that they both showed to the sellers and us as buyers was second to none and meant that any moving bumps were successfully managed. We would wholeheartedly recommend them to friends and, if we were to consider moving again, would certainly use them.

Emmah Ferguson

I had a great experience while purchasing a house with Sheldon Bosley Shipston on stour. From start to finish they have done everything they can to help and been great with communication. I dealt with Kate and Morgan who were both lovely but I'm sure it was a team effort behind the scenes. I felt like they were there for me and supportive. Thank you to you all!

Georgie Smith

Very helpful and friendly staff. They were happy to provide names of local tradesmen which will be a great help. Would highly recommend.

Jane Harms

A stress free procedure due mainly to the estate agent Rockwell Allen. There was excellent communication and marketing with the bonus of getting the asking price.

Susan

Millie has been absolutely brilliant from the word go. The whole experience has been a breath of fresh air and the complete opposite from our last dealings with an estate agent. Thank you Millie for all your hard work and advice, couldn't be bettered.

Kate

We couldn't recommend Sheldon Bosley Knight more. After having a house sale fall through previously, we were very nervous about making our offer, but the lovely Annette and Sara guided us through everything with ease and made us feel so comfortable with our decisions. We got the house of our dreams, and we are absolutely delighted! They made us feel like friends and we would recommend them to anyone looking to buy their perfect home.

Jen Singleton

To book a free no obligation market appraisal of your property contact your local office.

sheldonbosleyknight.co.uk



SALES

LETTINGS

PLANNING &
ARCHITECTURE

COMMERCIAL

STRATEGIC
LAND

NEW
HOMES

BLOCK
MANAGEMENT

RURAL



DISCLAIMER

All fixtures and fittings mentioned in these particulars are included in the sale, all others in the property are specifically excluded. Photographs are reproduced for general information and it must not be inferred that any item is included for sale with the property. These particulars are thought to be materially correct. Their accuracy is not guaranteed and they do not form part of any contract.