



SARA MORTON

BESPOKE REAL ESTATE AGENT



446 Chertsey Road

, Twickenham, TW2 6LP

Price Guide £1,095,000

SUBSTANTIAL SEMI DETACHED DOUBLE FRONTED HOME, NO ONWARD CHAIN, STUNNING GARDEN, REAR ACCESS, OFF STREET PARKING, GARAGE WITH POTENTIAL TO REAR, SIDE AND LOFT EXTEND. (STPP).

This spacious family home offers a fabulous opportunity to refurbish and increase the size of an already generous circa 1,500 square feet family home.

From the entrance hall is a study, dual aspect reception/dining room leading to the garden, cloakroom, kitchen and a further kitchen/breakfast room leading to a utility room.

To the first floor is a master bedroom with built in wardrobes and en-suite bathroom, double bedroom with fitted wardrobes, further double bedroom, large single bedroom and a family bathroom.

The beautifully presented rear garden has two storage sheds, a patio area and rear access.

Located close to excellent schools, recreation areas such as Kneller Gardens with tennis courts, cafe and children's play area, the River Crane and Crane Park.

The property is also well placed for Twickenham and Whitton town centres, along with the A316/M3 and Whitton mainline station to Waterloo.

- SUBSTANTIAL DOUBLE FRONTED SEMI DETACHED HOME
- FOUR BEDROOMS
- OFF STREET PARKING FOR 2 CARS
- GARAGE
- LARGE REAR AND FRONT GARDEN
- SCOPE TO EXTEND TO LOFT, SIDE AND REAR (STPP)
- CLOSE TO EXCELLENT SCHOOLS / KNELLER GARDENS / CRANE PARK
- WELL PLACED FOR TWICKENHAM AND WHITTON TOWN CENTRES
- WELL PLACED FOR WHITTON MAINLINE / A316/ M3
- NO ONWARD CHAIN

Viewing

Please contact our Sales Office on 0208 181 9660 if you wish to arrange a viewing appointment for this property or require further information.



4



2

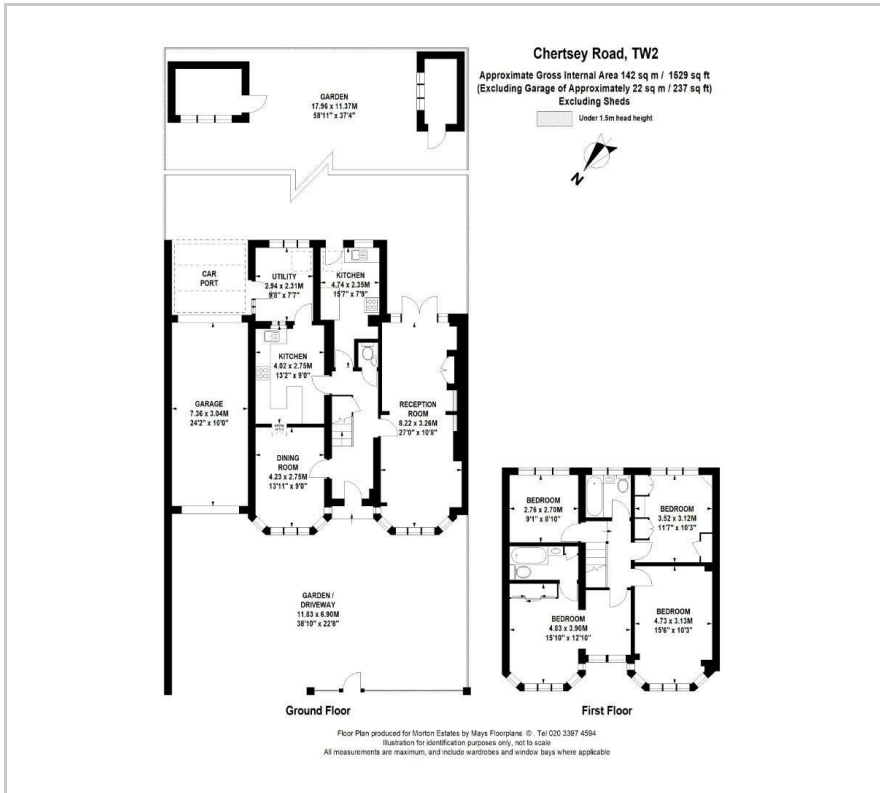


2



D

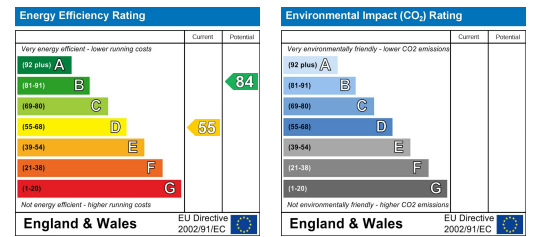
Floor Plan



Area Map



Energy Efficiency Graph



These particulars, whilst believed to be accurate are set out as a general outline only for guidance and do not constitute any part of an offer or contract. Intending purchasers should not rely on them as statements of representation of fact, but must satisfy themselves by inspection or otherwise as to their accuracy. No person in this firm's employment has the authority to make or give any representation or warranty in respect of the property.

27 Old Gloucester Street, London, WC1N 3AX

Tel: 0208 181 9660 Email: sara@mortonestates.com <https://www.saramortonrealestate.co.uk>