



SARA MORTON

BESPOKE REAL ESTATE AGENT



## 2 Bristol Close

, Whitton, TW4 5JE

Price Guide £470,000

THIS PROPERTY IS BEING SOLD VIA SECURE SALE ONLINE BIDDING. TERMS & CONDITIONS APPLY STARTING BID £470,000.

THREE DOUBLE BEDROOM, SEMI DETACHED, ALLOCATED PARKING, PRIVATE GARDEN, LARGE KITCHEN BREAKFAST ROOM. RICHMOND UPON THAMES BOROUGH. SCOPE TO REAR EXTEND (STPP).

Presented to the market with NO ONWARD CHAIN and is located in a CUL DE SAC.

From the spacious entrance hall is a reception room with double doors leading to a large open-plan kitchen/dining room. To the rear of the property is a generous lean-to from the kitchen, side access and a private south west facing garden. The ground floor also benefits from a cloakroom/WC.

To the first floor are two double bedrooms, master bedroom with fitted wardrobes and a family bathroom.

This family home is well located for popular schools such as Turing House Secondary School and Bishop Perrin Primary School. The property is also well placed for Whitton Town Centre, Heathfield Recreation Ground, Hounslow Town Centre and the A316 to London and M3.

BEING SOLD VIA SECURE SALE ONLINE BIDDING. TERMS AND CONDITIONS APPLY. STARTING BID £470,000

- SEMI DETACHED
- THREE DOUBLE BEDROOMS
- LARGE FAMILY KITCHEN/DINING ROOM
- CONSERVATORY
- ALLOCATED PARKING
- PRIVATE SOUTH WEST FACING GARDEN
- CLOSE TO POPULAR PRIMARY AND SECONDARY SCHOOLS
- WELL PLACED FOR WHITTON AND HOUNSLOW TOWN CENTRES
- NO ONWARD CHAIN

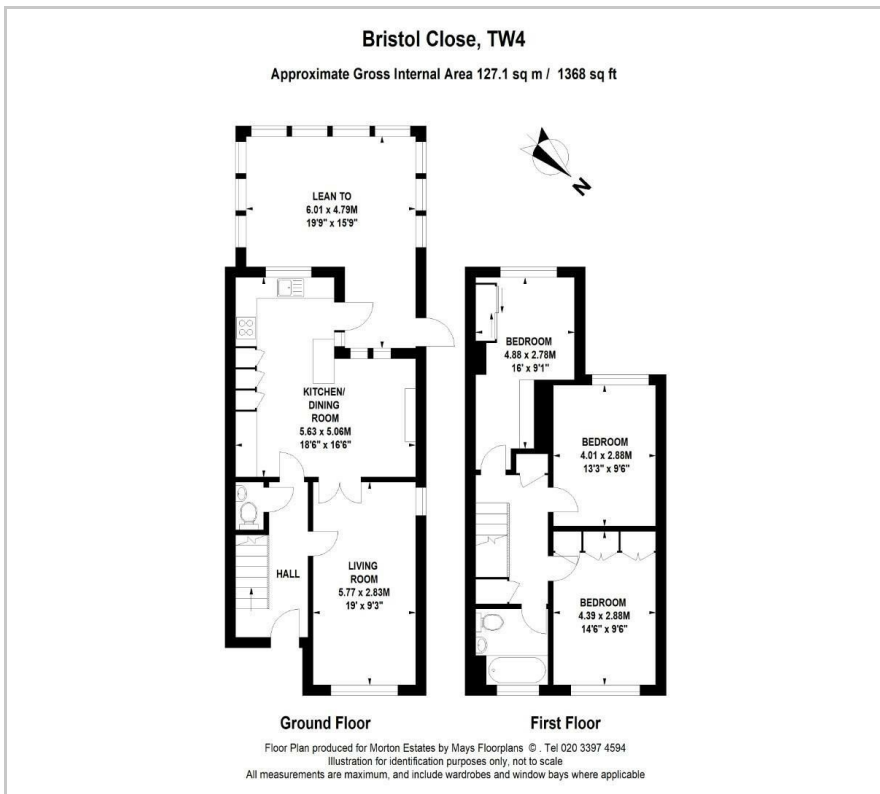
### Viewing

Please contact our Sales Office on 0208 181 9660 if you wish to arrange a viewing appointment for this property or require further information.





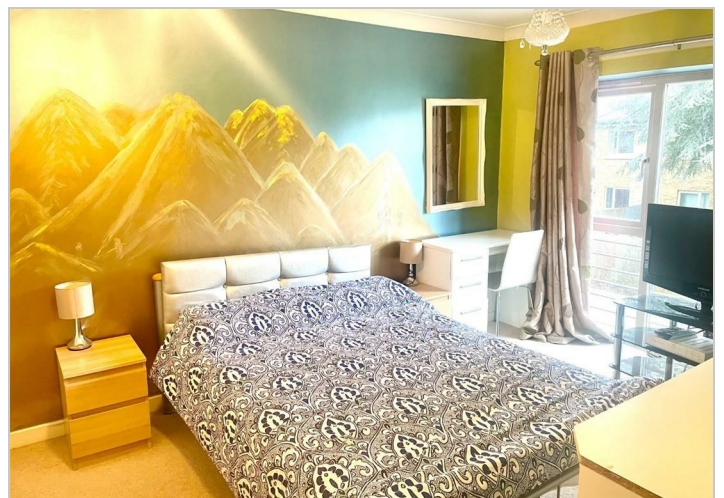
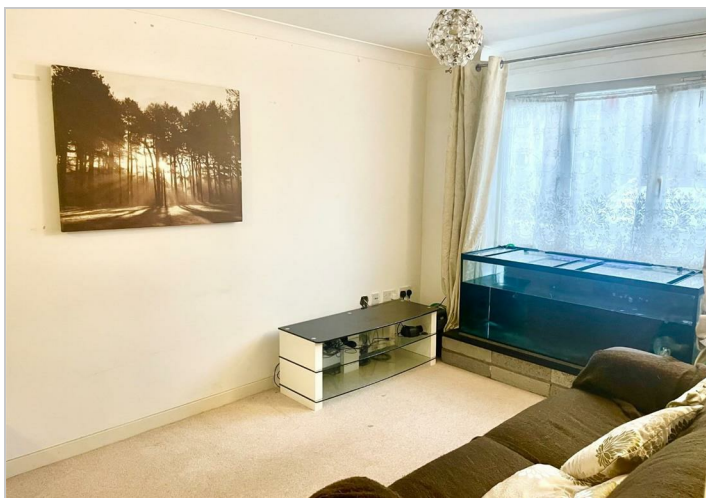
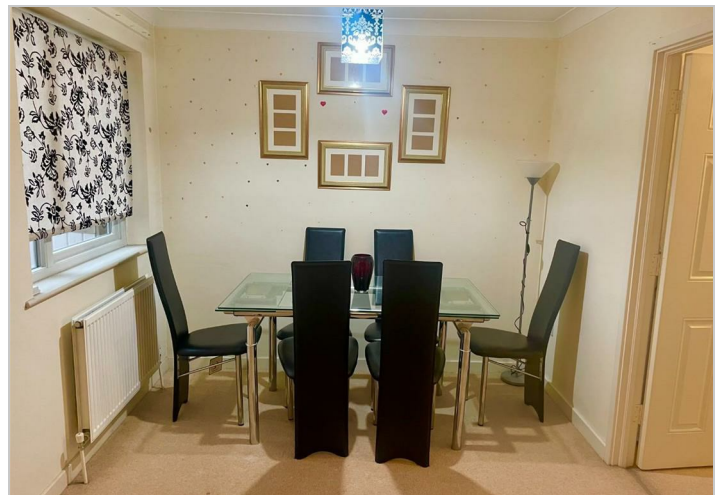
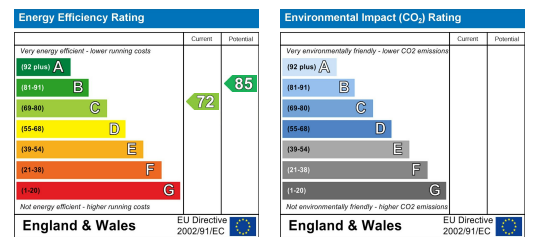
## Floor Plan



## Area Map



## Energy Efficiency Graph



These particulars, whilst believed to be accurate are set out as a general outline only for guidance and do not constitute any part of an offer or contract. Intending purchasers should not rely on them as statements of representation of fact, but must satisfy themselves by inspection or otherwise as to their accuracy. No person in this firm's employment has the authority to make or give any representation or warranty in respect of the property.