

20 Longhedge (Priory Park)

Dunstable, Dunstable, Bedfordshire, LU5 4BL



PRICE: £160,000

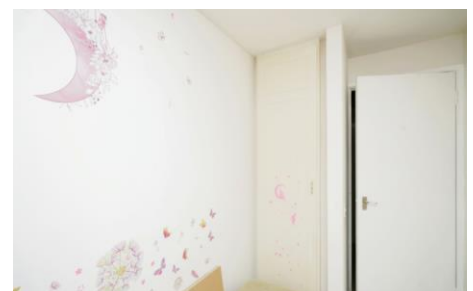
Lease: 125 years from 1985

Property Description:

A TWO BEDROOM RETIREMENT APARTMENT SITUATED ON THE FIRST FLOOR Priory Park is a development comprising of 4 closes with a total of 7 bungalows and 48 apartments. Some apartments do not have a lift or stairlift (please contact Development Manager to check). The Development Manager can be contacted from various points within each property in the case of an emergency. For periods when the Development Manager is off duty there is a 24 hour emergency Appello call system. Each property comprises an entrance hall, lounge, kitchen, one or two bedrooms and bathroom. It is a condition of purchase that residents be over the age of 60 years. Please speak to our Property Consultant if you require information regarding "Event Fees" that may apply to this property.

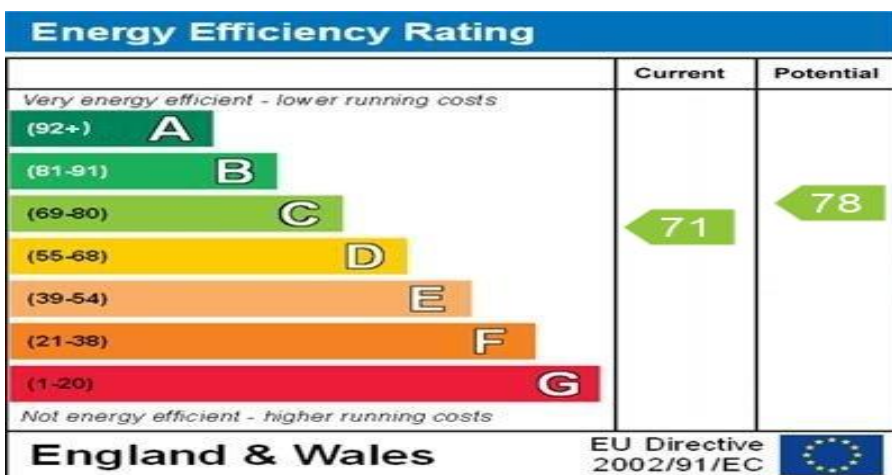
Development Manager
Communal lounge
Communal laundry
24 hour emergency Appello call system
Minimum Age 60

Communal garden
Price to include carpets, curtains and light fittings
Lease: 125 years from 1985
Service Charge £2704.64, Ground Rent £100.00



**For more details or to make an appointment to view, please contact
Mandy Abbott**

Floor Plan to follow.



WWW.EPC4U.COM

For Financial Year Ending:

31/03/25

Annual Ground Rent:

£100.00

Ground Rent Period Review:

Next Uplift 2035

Annual Service Charge:

£2704.64

Council Tax Band:

B

Event Fees:

Nil Transfer

Nil Contingency

Retirement Homesearch, Queensway House, 11 Queensway, New Milton, Hampshire, BH25 5NR
 T: 0333 321 4060 F: 0333 321 4065 E: enquiries@retirementhomesearch.co.uk

Retirement Homesearch Limited, Registered Office:
 Queensway House, 11 Queensway, New Milton, Hampshire, BH25 5NR
 Registered in England No. 3829469



These sales particulars have been prepared as a guide only and any intended purchasers must satisfy themselves by inspection or otherwise as to the correctness of the statements contained therein. The management company have not tested any apparatus, equipment, fittings or services and so cannot verify that they are in working order.