

## 39 Meadow Court

Links Road, Gorleston-on-Sea, Norfolk, NR31 6LB



**PRICE: £70,000**

**Lease: 120 years from 1992**

### Property Description:

A ONE BEDROOM RETIREMENT APARTMENT SITUATED ON THE FIRST FLOOR Meadow Court is a development with a two storey block of thirty one apartments. The Visiting Development Manager can be contacted from various points within each apartment in the case of an emergency. For periods when the Development Manager is off duty there is a 24 hour emergency call system within the apartment block. Each property comprises an entrance hall, lounge, kitchen, one or two bedrooms and bathroom. It is a condition of purchase that residents be over the age of 60 years, or in the event of a couple, one must be over the age of 60 years and the other over 55 years. Please speak to our Property Consultant if you require information regarding "Event Fees" that may apply to this property.

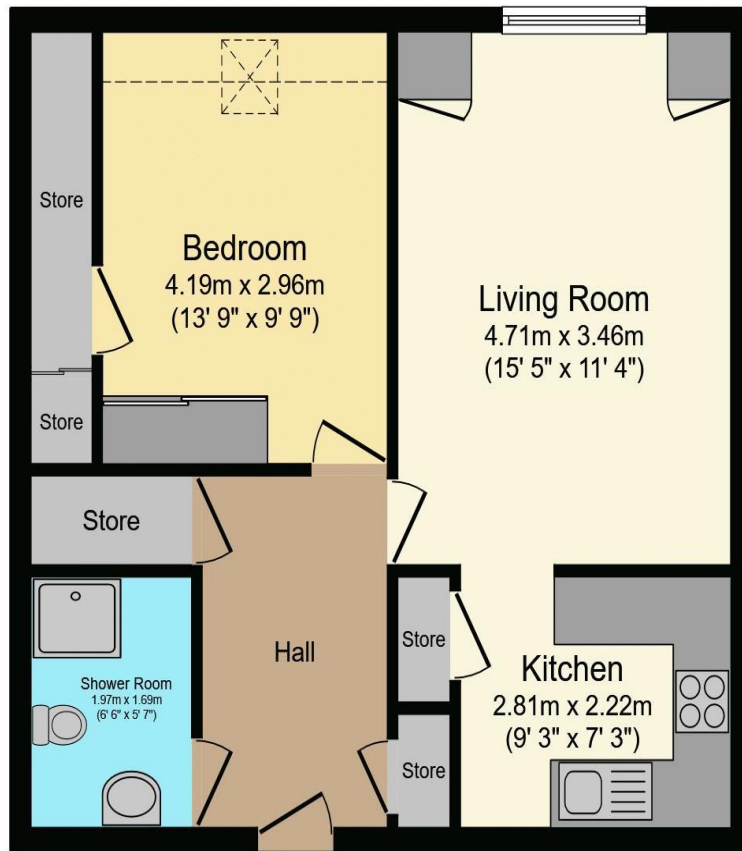
Residents' lounge  
Visiting Development Manager  
24 hour emergency call system  
Minimum Age 60  
Communal Laundry facilities

Guest Suite  
Stairlift

Lease: 120 years from 1992



**For more details or to make an appointment to view, please contact  
Mandy Abbott**



Total floor area 51.1 m<sup>2</sup> (550 sq.ft.) approx

This floor plan is for illustrative purposes only. It is not drawn to scale. Any measurements, floor areas (including any total floor area), openings and orientation are approximate. No details are guaranteed, they cannot be relied upon for any purpose and they do not form part of any agreement. No liability is taken for any error, omission or misstatement. A party must rely upon its own inspection(s).  
Powered by www.focalagent.com

Energy Efficiency Rating		Current	Potential
Very energy efficient - lower running costs			
(92-100)	<b>A</b>		
(81-91)	<b>B</b>		
(69-80)	<b>C</b>		
(55-68)	<b>D</b>	80	82
(39-54)	<b>E</b>		
(21-38)	<b>F</b>		
(1-20)	<b>G</b>		
Not energy efficient - higher running costs			
England, Scotland & Wales		EU Directive 2002/91/EC	

**For Financial Year Ending:**

**31/12/24**

**Annual Ground Rent:**

**£362.54**

**Ground Rent Period Review:**

**Next uplift 2033**

**Annual Service Charge:**

**£3703.74**

**Council Tax Band:**

**A**

**Event Fees:**

**1% Transfer**

**nil Contingency**

Retirement Homesearch, Queensway House, 11 Queensway, New Milton, Hampshire, BH25 5NR  
T: 0333 321 4060 F: 0333 321 4065 E: enquiries@retirementhomesearch.co.uk

Retirement Homesearch Limited, Registered Office:  
Queensway House, 11 Queensway, New Milton, Hampshire, BH25 5NR  
Registered in England No. 3829469



These sales particulars have been prepared as a guide only and any intended purchasers must satisfy themselves by inspection or otherwise as to the correctness of the statements contained therein. The management company have not tested any apparatus, equipment, fittings or services and so cannot verify that they are in working order.