

58 Cathedral View Court

Cabourne Avenue, Lincoln, Lincolnshire, LN2 2GF



PRICE: Fixed £45,000

Lease: 125 years from 1998

Property Description:

A ONE BEDROOM RETIREMENT APARTMENT SITUATED ON THE SECOND FLOOR

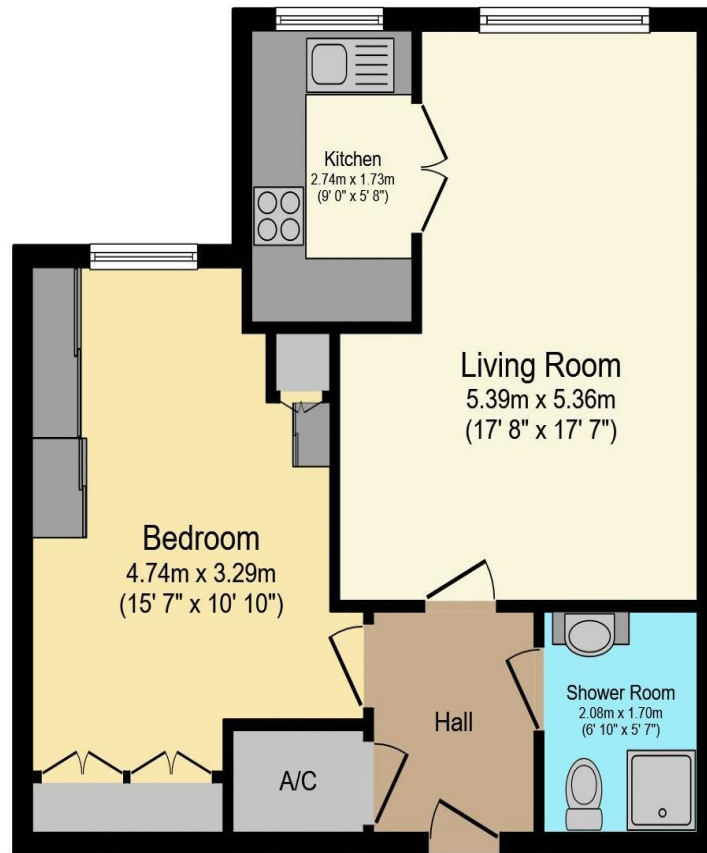
Cathedral View Court was constructed by McCarthy & Stone (Developments) Ltd and comprises 60 apartments arranged over 3 floors each served by lift. The Development Manager can be contacted from various points within each property in the case of an emergency. For periods when the Development Manager is off duty there is a 24 hour emergency Appello call system. Each property comprises an entrance hall, lounge, kitchen, one or two bedrooms and bathroom. It is a condition of purchase that residents be over the age of 55 years. Please speak to our Property Consultant if you require information regarding "Event Fees" that may apply to this property.

Residents' lounge
Communal Laundry
Development Manager
Minimum Age 55
Security Entry System and Intruder Alarm

Guest Suite and Lift to all floors
Car parking
24 hour emergency Appello call system
Lease 125 years from 1998

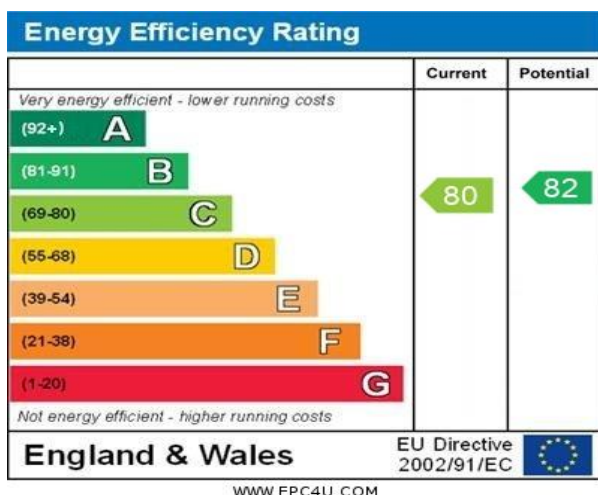


**For more details or to make an appointment to view, please contact
Mr Jordan Joice**



Total floor area 50.0 sq.m. (538 sq.ft.) approx

This floor plan is for illustrative purposes only. It is not drawn to scale. Any measurements, floor areas (including any total floor area), openings and orientation are approximate. No details are guaranteed, they cannot be relied upon for any purpose and they do not form part of any agreement. No liability is taken for any error, omission or misstatement. A party must rely upon its own inspection(s).
Powered by www.focalagent.com



For Financial Year Ending:

31/08/25

Annual Ground Rent:

£560.95

Ground Rent Period Review:

2042

Annual Service Charge:

£2,863.72

Council Tax Band:

A

Event Fees:

1% Transfer
1% Contingency

Retirement Homesearch, Queensway House, 11 Queensway, New Milton, Hampshire, BH25 5NR
T: 0333 321 4060 F: 0333 321 4065 E: enquiries@retirementhomesearch.co.uk

Retirement Homesearch Limited, Registered Office:
Queensway House, 11 Queensway, New Milton, Hampshire, BH25 5NR
Registered in England No. 3829469



These sales particulars have been prepared as a guide only and any intended purchasers must satisfy themselves by inspection or otherwise as to the correctness of the statements contained therein. The management company have not tested any apparatus, equipment, fittings or services and so cannot verify that they are in working order.