

## 8 Camsell Court

Durham Moor, Durham, County Durham, DH1 5FQ



**PRICE: Offers in Excess of  
£190,000**

**Lease: 125 years from 2007**

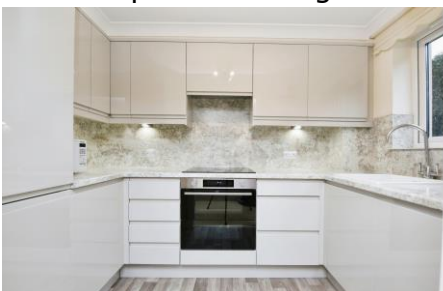
### Property Description:

#### **A TWO BEDROOM RETIREMENT APARTMENT SITUATED ON THE GROUND FLOOR WITH ACCESS TO PATIO AREA**

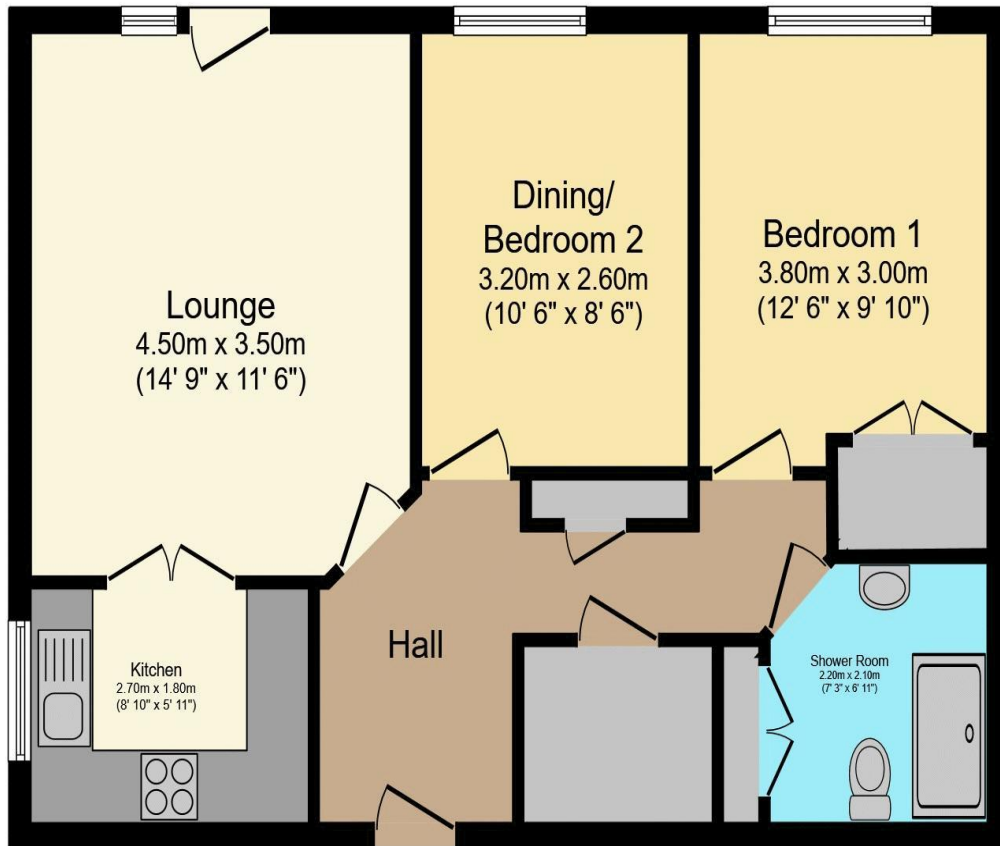
Camsell Court was constructed by McCarthy & Stone (Developments) Ltd and comprises 48 retirement apartments arranged over 3 floors served by a lift. There are two apartments located in a separate annexe at the end of the drive. The Development Manager can be contacted from various points within each property in the case of an emergency. For periods when the Development Manager is off duty there is a 24 hour emergency Appello call system. Each property comprises an entrance hall, lounge, kitchen, one or two bedrooms and bathroom. It is a condition of purchase that residents be over the age of 60 years, or in the event of a couple, one must be over the age of 60 years and the other over 55 years. Please speak to our Property Consultant if you require information regarding "Event Fees" that may apply to this property.

Residents' lounge  
Communal Laundry  
24 hour emergency Appello call system  
Video, TV and telephone door entry system  
Development Manager

Minimum Age 60  
Guest Suite and Car Parking  
Lift to all floors  
Lease: 125 years from 2007



**For more details or to make an appointment to view, please contact  
Mr Jordan Joice**



Total floor area 60.8 m<sup>2</sup> (654 sq.ft.) approx

This floor plan is for illustrative purposes only. It is not drawn to scale. Any measurements, floor areas (including any total floor area), openings and orientation are approximate. No details are guaranteed, they cannot be relied upon for any purpose and they do not form part of any agreement. No liability is taken for any error, omission or misstatement. A party must rely upon its own inspection(s).  
Powered by www.focalagent.com

Energy Efficiency Rating		
	Current	Potential
<i>Very energy efficient - lower running costs</i>		
(92-100) <b>A</b>		
(81-91) <b>B</b>		
(69-80) <b>C</b>	77	80
(55-68) <b>D</b>		
(39-54) <b>E</b>		
(21-38) <b>F</b>		
(1-20) <b>G</b>		
<i>Not energy efficient - higher running costs</i>		
England, Scotland & Wales		
EU Directive 2002/91/EC		

**For Financial Year Ending:**

**31.07.24**

**Annual Ground Rent:**

**£495.00**

**Ground Rent Period Review:**

**2030**

**Annual Service Charge:**

**£4441.20**

**Council Tax Band:**

**B**

**Event Fees:**

**1% Transfer**

**1% Contingency**

Retirement Homesearch, Queensway House, 11 Queensway, New Milton, Hampshire, BH25 5NR  
T: 0333 321 4060 F: 0333 321 4065 E: enquiries@retirementhomesearch.co.uk

Retirement Homesearch Limited, Registered Office:  
Queensway House, 11 Queensway, New Milton, Hampshire, BH25 5NR  
Registered in England No. 3829469



These sales particulars have been prepared as a guide only and any intended purchasers must satisfy themselves by inspection or otherwise as to the correctness of the statements contained therein. The management company have not tested any apparatus, equipment, fittings or services and so cannot verify that they are in working order.