

23 Gracewell Court

1520 Stratford Road, Birmingham, West Midlands, B28 9ET



PRICE: £100,000

Lease: 125 years from 2007

Property Description:

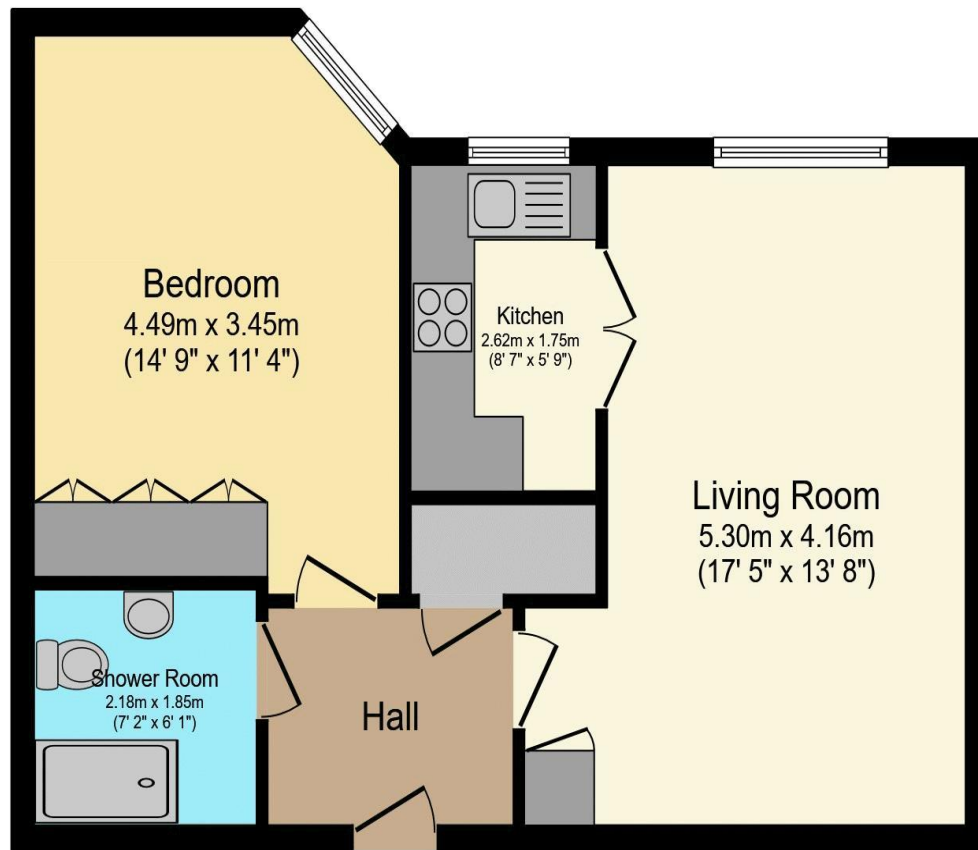
A ONE BEDROOM RETIREMENT APARTMENT SITUATED ON THE FIRST FLOOR BENEFITING FROM UPDATED WET ROOM. Gracewell Court was constructed by McCarthy & Stone (Developments) Ltd. The development comprises 39 properties arranged over 3 floors each served by a lift. The Development Manager can be contacted from various points from within each property in the case of an emergency. For periods when the Development Manager is off duty there is a 24 hour emergency Appello call system. Each property comprises an entrance hall, lounge, kitchen, one or two bedrooms and bathroom. It is a condition of purchase that residents be over the age of 60 years. Please speak to our Property Consultant if you require information regarding "Event Fees" that may apply to this property.

Development Manager
Minimum Age 60
Residents Lounge & Communal Gardens
24 Hour Emergency Appello call System
Car Park and Security Entry System

Guest Suite
Lift
Communal Laundry facilities
Lease: 125 years from 2007

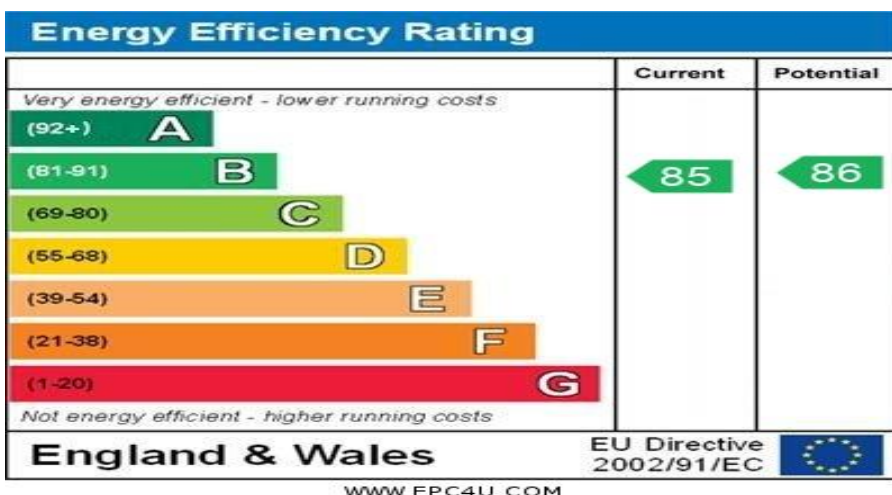


**For more details or to make an appointment to view, please contact
Charlotte Harvey MNAEA**



Total floor area 49.6 m² (534 sq.ft.) approx

This floor plan is for illustrative purposes only. It is not drawn to scale. Any measurements, floor areas (including any total floor area), openings and orientation are approximate. No details are guaranteed, they cannot be relied upon for any purpose and they do not form part of any agreement. No liability is taken for any error, omission or misstatement. A party must rely upon its own inspection(s).
Powered by www.focalagent.com



For Financial Year Ending:

28/02/2026

Annual Ground Rent:

£425.00

Ground Rent Period Review:

2030

Annual Service Charge:

£3,968.20

Council Tax Band:

B

Event Fees:

1% Transfer

1% Contingency

Retirement Homesearch, Queensway House, 11 Queensway, New Milton, Hampshire, BH25 5NR
T: 0333 321 4060 F: 0333 321 4065 E: enquiries@retirementhomesearch.co.uk

Retirement Homesearch Limited, Registered Office:
Queensway House, 11 Queensway, New Milton, Hampshire, BH25 5NR
Registered in England No. 3829469



These sales particulars have been prepared as a guide only and any intended purchasers must satisfy themselves by inspection or otherwise as to the correctness of the statements contained therein. The management company have not tested any apparatus, equipment, fittings or services and so cannot verify that they are in working order.