

## 29 Meadsvew Court

Clockhouse Road, Farnborough, Hampshire, GU14 7NW



**PRICE: Offers in Excess of  
£120,000**

**Lease: 125 years from 1994**

### Property Description:

#### A TWO BEDROOM THIRD FLOOR RETIREMENT APARTMENT

Meadsvew Court was constructed by McCarthy & Stone (Developments) Ltd and comprises 28 properties arranged over 4 floors each served by lift. The visiting Development Manager can be contacted from various points within each property in the case of an emergency.

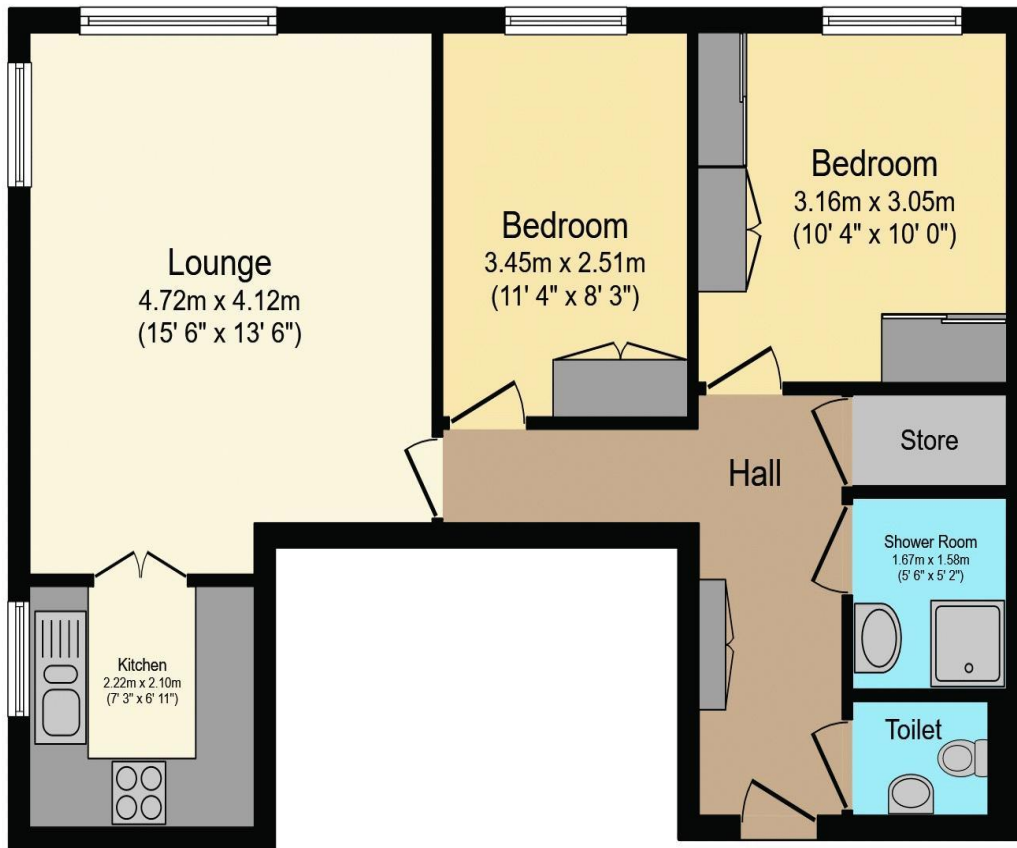
For periods when the development Manager is off duty there is a 24 hour emergency Appello call system. Each property comprises an entrance hall, lounge, kitchen, one or two bedrooms and bathroom. It is a condition of purchase that residents be over the age of 60 years, or in the case of a couple then one must over 60 years and the other over 55 years.

Please speak to our Property Consultant if you require information regarding 'Event Fees' that may apply to this property.

- Residents' lounge
- Communal Laundry
- 24 hour emergency Appello call system
- Video door entry system (linked to Residents TV)
- Guest Suite
- Visiting Development Manager
- Lift to all floors
- Lease: 125 years from 1994



**For more details or to make an appointment to view, please contact  
Millie & Carla**



Total floor area 56.8 sq.m. (611 sq.ft.) approx

This floor plan is for illustrative purposes only. It is not drawn to scale. Any measurements, floor areas (including any total floor area), openings and orientation are approximate. No details are guaranteed, they cannot be relied upon for any purpose and they do not form part of any agreement. No liability is taken for any error, omission or misstatement. A party must rely upon its own inspection(s).  
Powered by www.focalagent.com

| Energy Efficiency Rating                    |          | Current                 | Potential |
|---|----------|-------------------------|-----------|
| Very energy efficient - lower running costs |          |                         |           |
| (92-100)                                    | <b>A</b> |                         |           |
| (81-91)                                     | <b>B</b> |                         |           |
| (69-80)                                     | <b>C</b> |                         |           |
| (55-68)                                     | <b>D</b> | 73                      | 82        |
| (39-54)                                     | <b>E</b> |                         |           |
| (21-38)                                     | <b>F</b> |                         |           |
| (1-20)                                      | <b>G</b> |                         |           |
| Not energy efficient - higher running costs |          |                         |           |
| England, Scotland & Wales                   |          | EU Directive 2002/91/EC |           |

**For Financial Year Ending:**

**31/8/2025**

**Annual Ground Rent:**

**£582.08**

**Ground Rent Period Review:**

**Next Uplift 2038**

**Annual Service Charge:**

**£5,446.46**

**Council Tax Band:**

**D**

**Event Fees:**

**1% Transfer**

**1% Contingency**

Retirement Homesearch, Queensway House, 11 Queensway, New Milton, Hampshire, BH25 5NR  
T: 0333 321 4060 F: 0333 321 4065 E: enquiries@retirementhomesearch.co.uk

Retirement Homesearch Limited, Registered Office:  
Queensway House, 11 Queensway, New Milton, Hampshire, BH25 5NR  
Registered in England No. 3829469



These sales particulars have been prepared as a guide only and any intended purchasers must satisfy themselves by inspection or otherwise as to the correctness of the statements contained therein. The management company have not tested any apparatus, equipment, fittings or services and so cannot verify that they are in working order.