

5 Tremaine Close

Tremaine Close, Honiton, Devon, EX14 1FZ



PRICE: Guide Price £140,000

Lease:

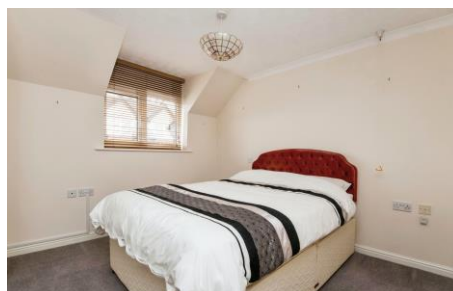
Property Description:

A TWO BEDROOM END OF TERRACE RETIREMENT COTTAGE

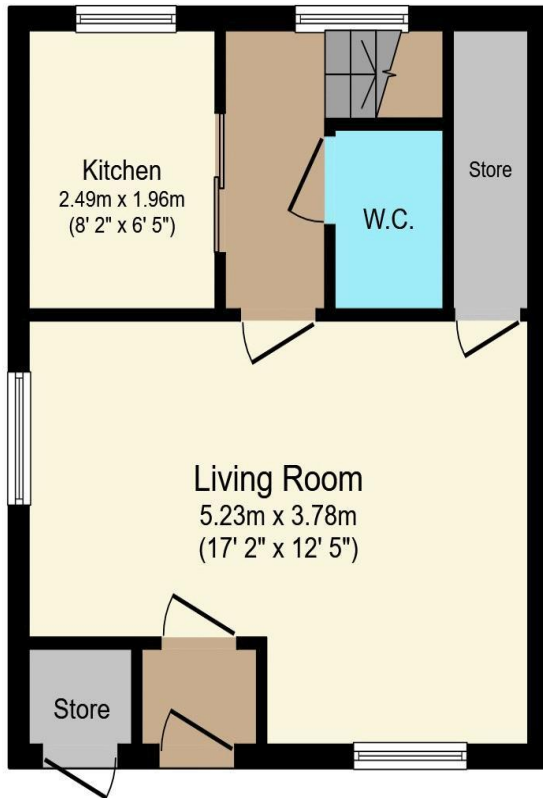
Tremaine Close is comprised of 31 properties. The Development Manager can be contacted from various points within each property in the case of an emergency. For periods when the Development Manager is off duty there is a 24 hour emergency Appello call system.

Each property has a lounge/dining room, kitchen, two bedrooms, a bathroom and downstairs cloakroom. It is a condition of purchase that residents be over the age of 55 years.

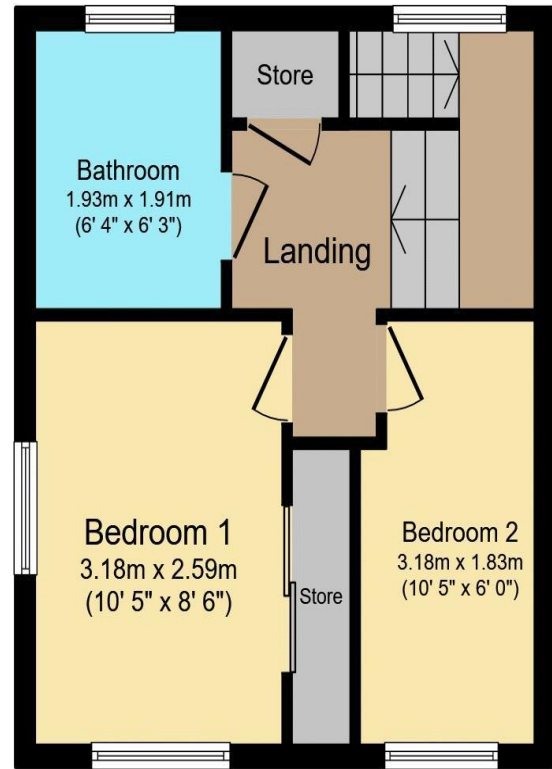
- Minimum Age 55
- Communal Gardens
- Development Manager
- Private Parking
- 24 hour emergency Appello call system
- FREEHOLD
- Service Charge £3,086.23 Ground Rent N/A



**For more details or to make an appointment to view, please contact
Rachel Hazell**



Ground Floor



First Floor

Total floor area 66.7 m² (718 sq.ft.) approx

This floor plan is for illustrative purposes only. It is not drawn to scale. Any measurements, floor areas (including any total floor area), openings and orientation are approximate. No details are guaranteed, they cannot be relied upon for any purpose and they do not form part of any agreement. No liability is taken for any error, omission or misstatement. A party must rely upon its own inspection(s).
Powered by www.focalagent.com

Energy Efficiency Rating		Current	Potential
Very energy efficient - lower running costs			
(92-100)	A		
(81-91)	B		86
(69-80)	C		
(55-68)	D	62	
(39-54)	E		
(21-38)	F		
(1-20)	G		
Not energy efficient - higher running costs			
England, Scotland & Wales		EU Directive 2002/91/EC	

For Financial Year Ending:

31/03/2025

Annual Ground Rent:

£N/A

Ground Rent Period Review:

N/A

Annual Service Charge:

£3,086.23

Council Tax Band:

C

Event Fees:

0% Transfer

0% Contingency

Retirement Homesearch, Queensway House, 11 Queensway, New Milton, Hampshire, BH25 5NR
T: 0333 321 4060 F: 0333 321 4065 E: enquiries@retirementhomesearch.co.uk

Retirement Homesearch Limited, Registered Office:
Queensway House, 11 Queensway, New Milton, Hampshire, BH25 5NR
Registered in England No. 3829469



These sales particulars have been prepared as a guide only and any intended purchasers must satisfy themselves by inspection or otherwise as to the correctness of the statements contained therein. The management company have not tested any apparatus, equipment, fittings or services and so cannot verify that they are in working order.