

61 Halebrose Court

Seafield Road, Bournemouth, Dorset, BH6 3DU



**PRICE: Offers in Excess of
£100,000**

Lease: 125 years from 1996

Property Description:

A SOUTH FACING THIRD FLOOR ONE BEDROOM RETIREMENT APARTMENT Halebrose Court was constructed by McCarthy & Stone (Developments) Ltd and comprises 83 properties arranged over 6 floors each served by lift. The Development Manager can be contacted from various points within each property in the case of an emergency. For periods when the Development Manager is off duty there is a 24 hour emergency Appello call system. Each property comprises an entrance hall, lounge, kitchen, one or two bedrooms and bathroom. It is a condition of purchase that residents be over the age of 60 years. Regular bus service to Christchurch and to Bournemouth. Please speak to our Property Consultant if you require information regarding event fees that may apply to this property.

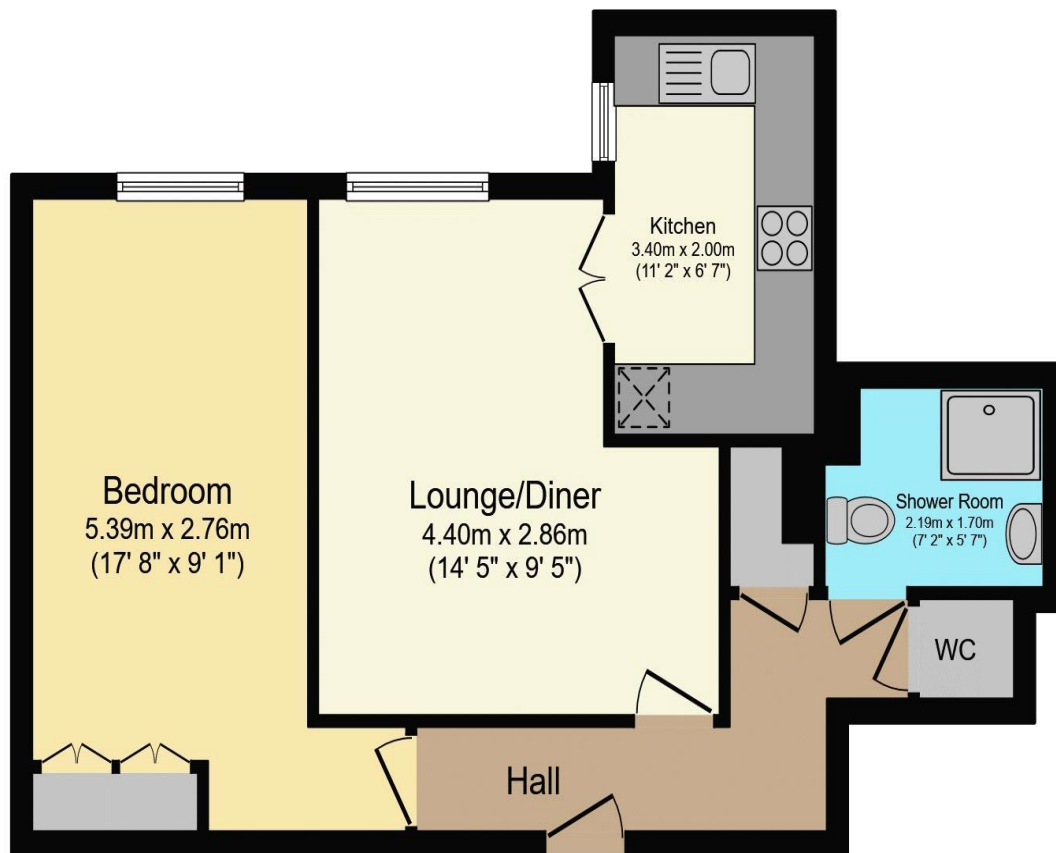
Residents' lounge
Communal Laundry
24 hour emergency Appello call system

Development Manager

Minimum Age 60
Guest Suite
Lift to all floors
Lease 125 years from 1996

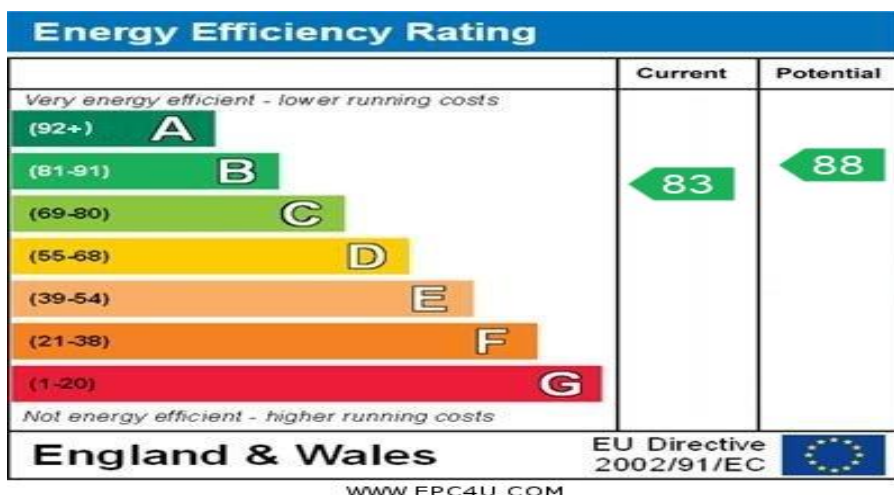


**For more details or to make an appointment to view, please contact
Rachel Hazell**



Total floor area 50.9 m² (548 sq.ft.) approx

This floor plan is for illustrative purposes only. It is not drawn to scale. Any measurements, floor areas (including any total floor area), openings and orientation are approximate. No details are guaranteed, they cannot be relied upon for any purpose and they do not form part of any agreement. No liability is taken for any error, omission or misstatement. A party must rely upon its own inspection(s).
Powered by www.focalagent.com



For Financial Year Ending:

31/08/2025

Annual Ground Rent:

£520.00

Ground Rent Period Review:

2040

Annual Service Charge:

£2,665.96

Council Tax Band:

C

Event Fees:

1% Transfer

1% Contingency

Retirement Homesearch, Queensway House, 11 Queensway, New Milton, Hampshire, BH25 5NR
T: 0333 321 4060 F: 0333 321 4065 E: enquiries@retirementhomesearch.co.uk

Retirement Homesearch Limited, Registered Office:
Queensway House, 11 Queensway, New Milton, Hampshire, BH25 5NR
Registered in England No. 3829469



These sales particulars have been prepared as a guide only and any intended purchasers must satisfy themselves by inspection or otherwise as to the correctness of the statements contained therein. The management company have not tested any apparatus, equipment, fittings or services and so cannot verify that they are in working order.