

18 Kelston Gardens (Worle)

Locksbrook Road, Weston-Super-Mare, Somerset, BS22 7FP



PRICE: Guide Price £210,000

Lease: zero years

Property Description:

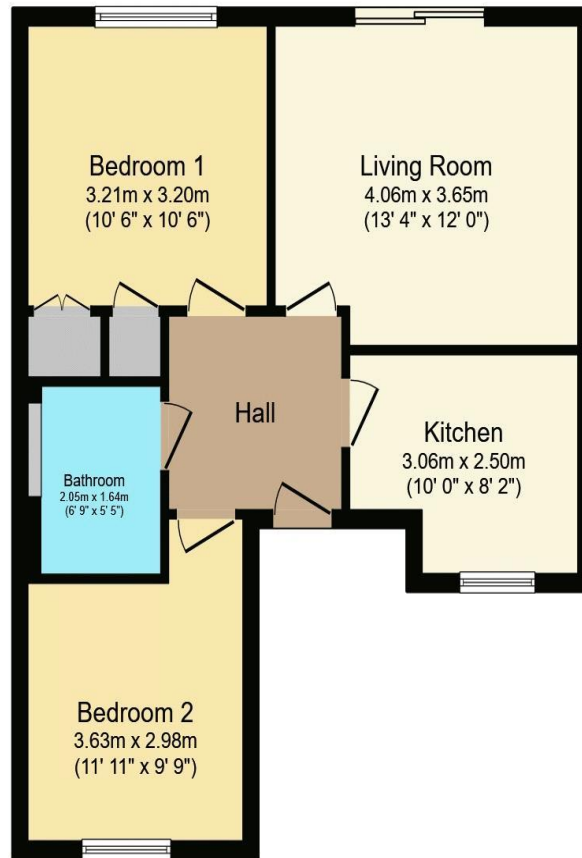
A TWO BEDROOM TERRACE RETIREMENT BUNGALOW Kelston Gardens is a development comprising of 37 bungalows. The 24 hour Emergency Appello call System can be contacted from various points within each property if necessary. Each property comprises an entrance hall, lounge, kitchen, two bedrooms and a bathroom. It is a condition of purchase that one of the residents must be 60 years or over.

Visiting Development Manager
Maintained communal gardens
24 hour emergency Appello call system
Minimum Age 60
Residents communal parking

FREEHOLD
Service Charge £2,587.11



**For more details or to make an appointment to view, please contact
Rachel Hazell**



Total floor area 53.1 m² (572 sq.ft.) approx

This floor plan is for illustrative purposes only. It is not drawn to scale. Any measurements, floor areas (including any total floor area), openings and orientation are approximate. No details are guaranteed, they cannot be relied upon for any purpose and they do not form part of any agreement. No liability is taken for any error, omission or misstatement. A party must rely upon its own inspection(s).
Powered by www.focalagent.com

EPC to follow.

For Financial Year Ending:

31/3/25

Annual Ground Rent:

£0.00

Ground Rent Period Review:

N/A

Annual Service Charge:

£2,587.11

Council Tax Band:

B

Event Fees:

**0% Transfer
0% Contingency**

Retirement Homesearch, Queensway House, 11 Queensway, New Milton, Hampshire, BH25 5NR
T: 0333 321 4060 F: 0333 321 4065 E: enquiries@retirementhomesearch.co.uk

Retirement Homesearch Limited, Registered Office:
Queensway House, 11 Queensway, New Milton, Hampshire, BH25 5NR
Registered in England No. 3829469



These sales particulars have been prepared as a guide only and any intended purchasers must satisfy themselves by inspection or otherwise as to the correctness of the statements contained therein. The management company have not tested any apparatus, equipment, fittings or services and so cannot verify that they are in working order.