

32 Glenside Court

Higher Erith Road, Torquay, Devon, TQ1 2RJ



PRICE: £70,000

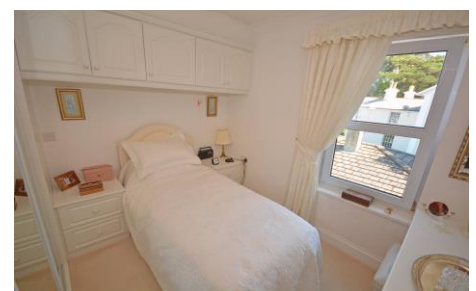
Lease: 99 years from 1987

Property Description:

A ONE BEDROOM SECOND FLOOR RETIREMENT APARTMENT WITH DOUBLE ASPECT LOUNGE

Glenside Court comprises 30 properties arranged over 4 floors and is served by a lift. The Development Manager can be contacted from various points within each property in the case of an emergency. For periods when the Development Manager is off duty there is a 24 hour emergency Appello call system. Each property comprises an entrance hall, lounge, kitchen, one bedroom and a bathroom. It is a condition of purchase that residents be over the age of 60 years.

- Development Manager
- Communal Garden
- Storage Room facility
- Minimum Age 60
- Parking
- Lift
- Lease 99 years from 1987
- Service Charge £3,471.20 Ground Rent £100.00



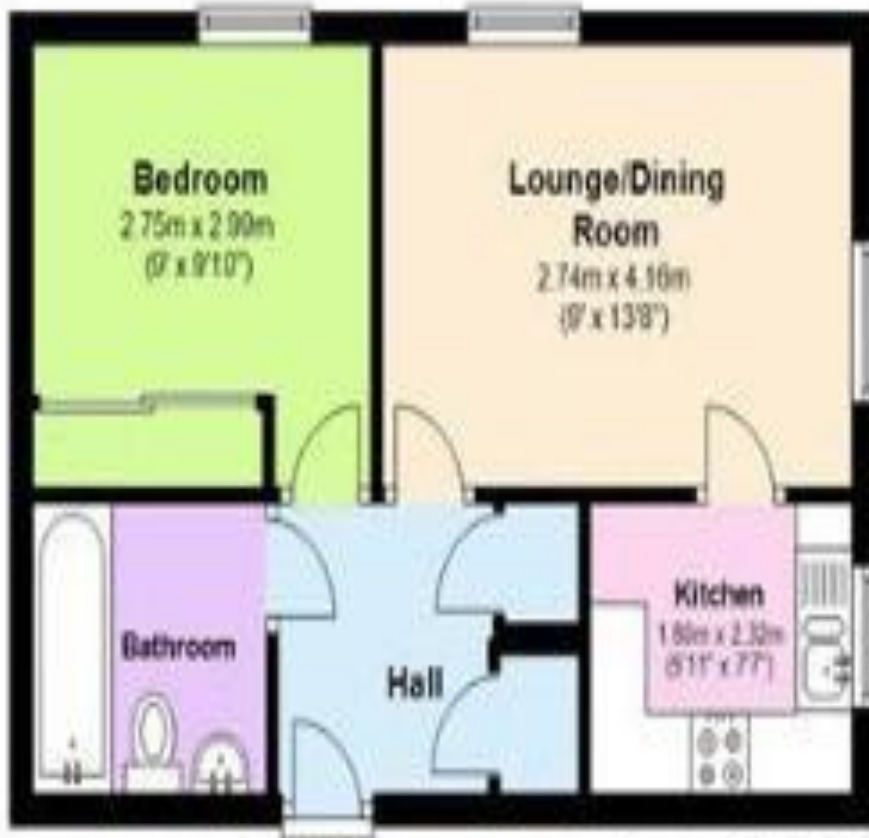
**For more details or to make an appointment to view, please contact
Rachel Hazell**

Visit us at
retirementhomesearch.co.uk

RETIREMENT
HOMESearch

Floor Plan

Approx. 33.7 sq. metres (362.5 sq. feet)



area: approx. 33.7 sq. metres (362.5 sq. feet)

Energy Efficiency Rating		Current	Potential
Very energy efficient - lower running costs			
(92-100)	A		
(81-91)	B		
(69-80)	C		
(55-68)	D	69	77
(39-54)	E		
(21-38)	F		
(1-20)	G		
Not energy efficient - higher running costs			
England, Scotland & Wales		EU Directive 2002/91/EC	

For Financial Year Ending:

31/03/2025

Annual Ground Rent:

£100.00

Ground Rent Period Review:

2040

Annual Service Charge:

£3,471.20

Council Tax Band:

A

Event Fees:

0% Transfer

0% Contingency

Retirement Homesearch, Queensway House, 11 Queensway, New Milton, Hampshire, BH25 5NR
 T: 0333 321 4060 F: 0333 321 4065 E: enquiries@retirementhomesearch.co.uk

Retirement Homesearch Limited, Registered Office:
 Queensway House, 11 Queensway, New Milton, Hampshire, BH25 5NR
 Registered in England No. 3829469



These sales particulars have been prepared as a guide only and any intended purchasers must satisfy themselves by inspection or otherwise as to the correctness of the statements contained therein. The management company have not tested any apparatus, equipment, fittings or services and so cannot verify that they are in working order.