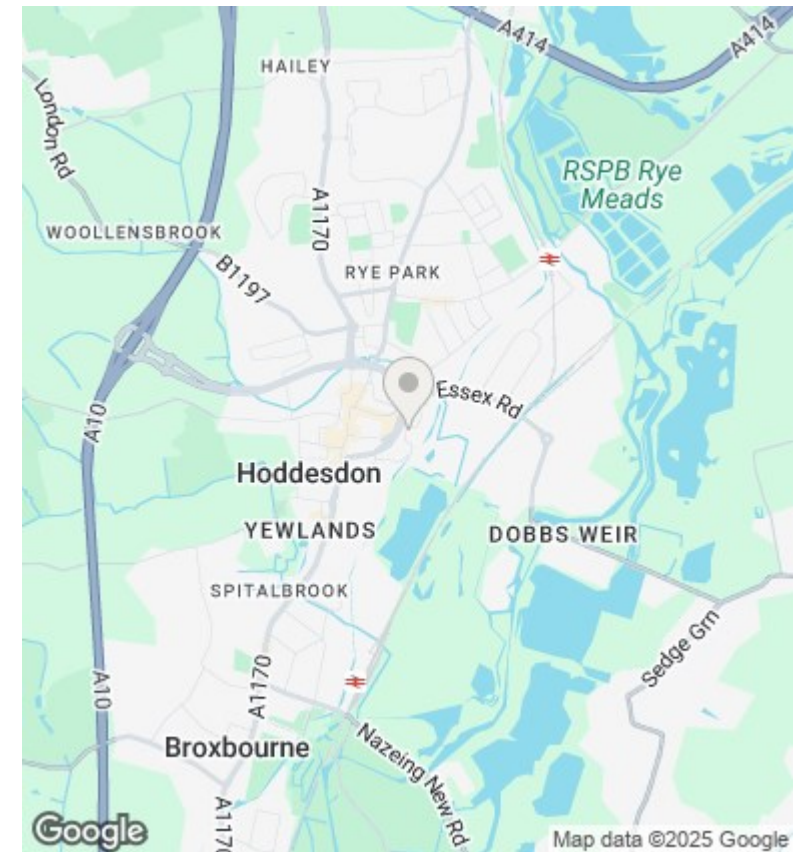
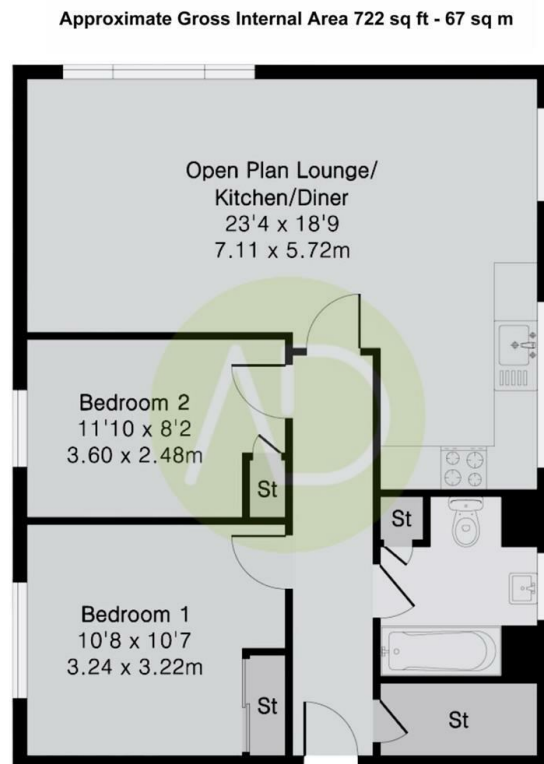




273 Lampits, Hoddesdon, EN11 8EE

Offers In Excess Of £265,000

- Two Bedroom Penthouse Apartment
- Modern Bathroom
- Residents Parking
- Modern Interior Throughout
- Long Lease
- Available for Viewing
- Spacious Lounge with Open Plan Kitchen
- Great Location within Walking Distance to Town Centre



Directions

Viewings

Viewings by arrangement only. Call 01992 470335 to make an appointment.

Council Tax Band

EPC Rating:

Energy Efficiency Rating		
	Current	Potential
Very energy efficient - lower running costs		
(92 plus) A		
(81-91) B		
(69-80) C		
(55-68) D		
(39-54) E		
(21-38) F		
(1-20) G		
Not energy efficient - higher running costs		
England & Wales	EU Directive 2002/91/EC	