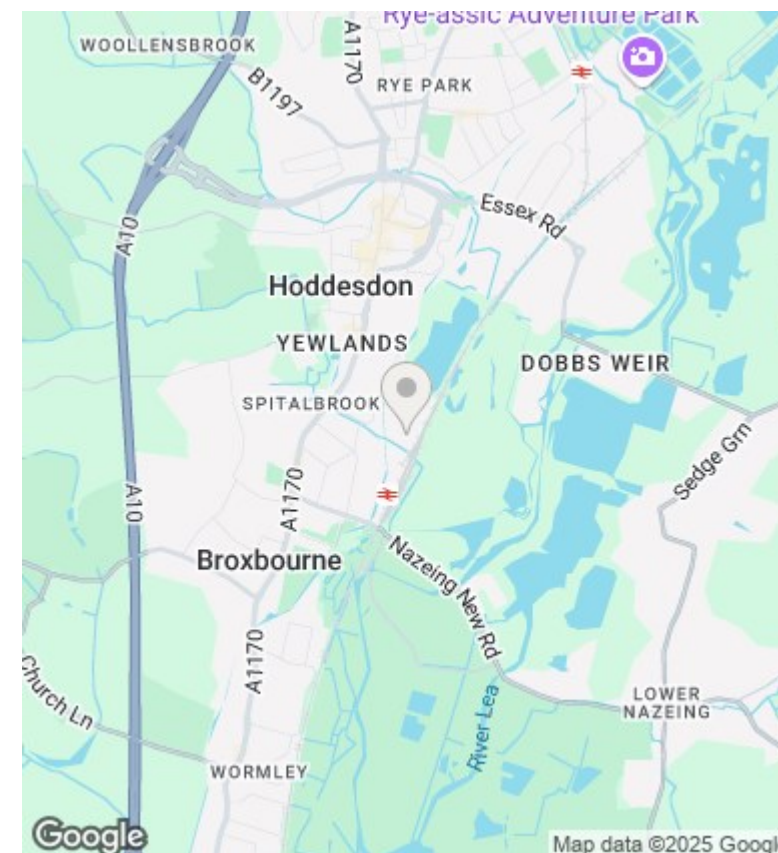
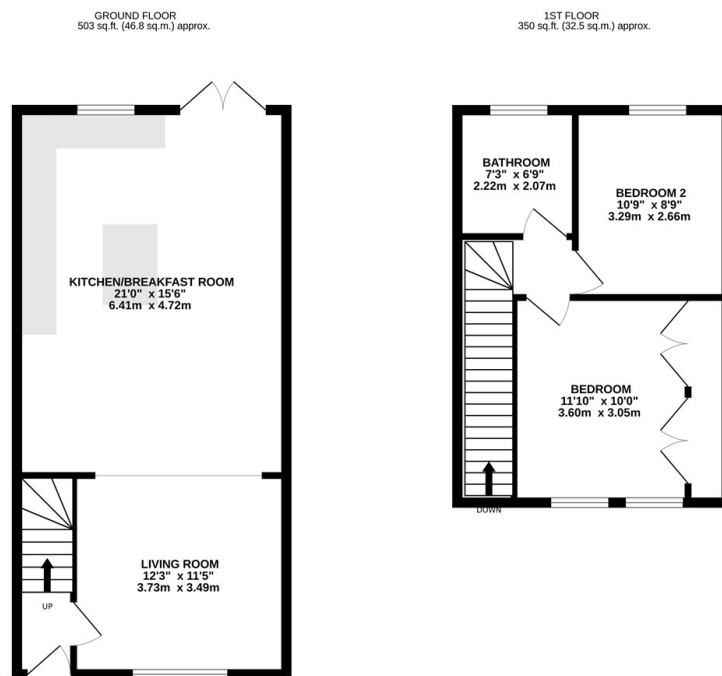




## 13 Meadway, Hoddesdon, EN11 8AP

Asking Price £425,000

- Two Bedroom House
- Open Plan Extended Kitchen
- Offered Chain Free
- Spacious Living Accomodation
- Large Rear Garden
- Book Your Viewings Today
- Walking Distance to Broxbourne Station
- Two Spacious Bedrooms



## Directions

## Viewings

Viewings by arrangement only. Call 01992 470335 to make an appointment.

## Council Tax Band

## EPC Rating:

D

