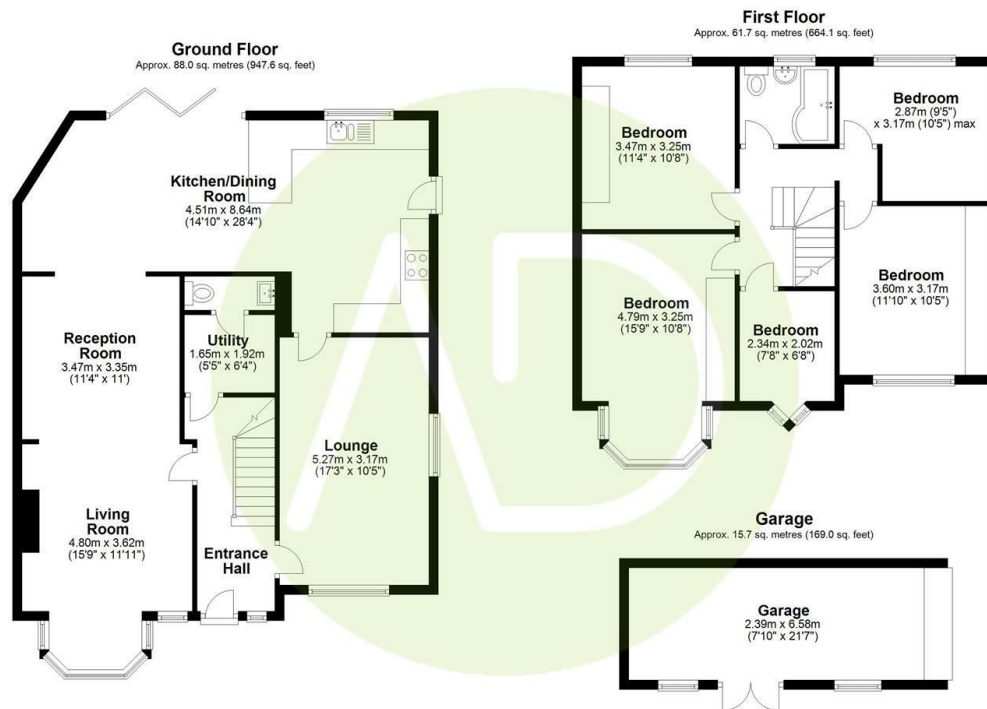




6 Keswick Drive, Enfield, EN3 6NZ

Offers In Excess Of £700,000

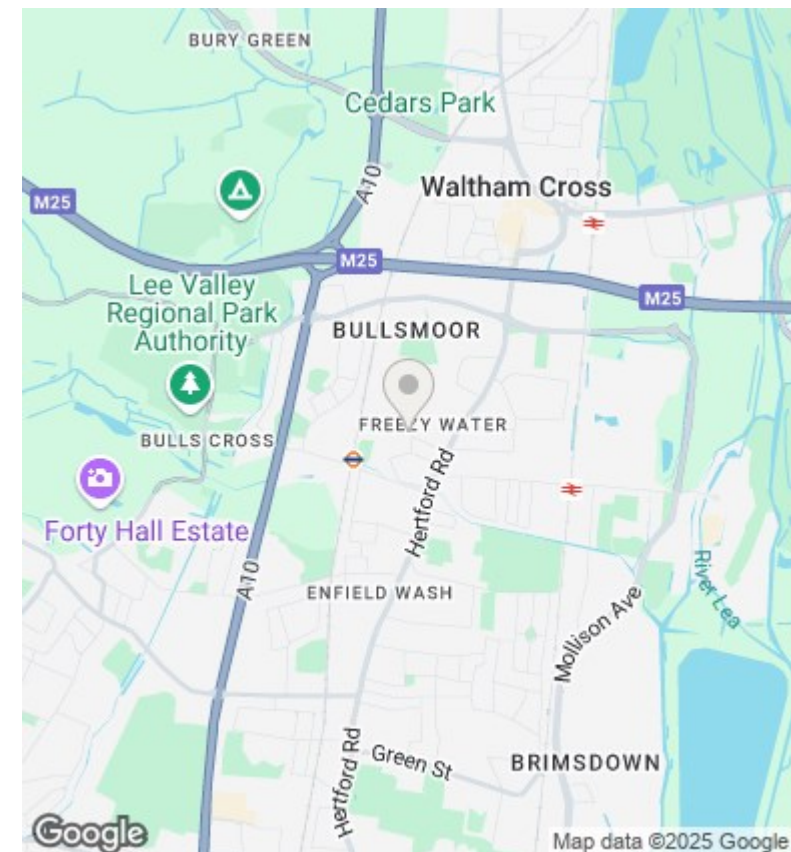
- Five Bedroom Family Home
- Two Bathrooms
- Available Chain Free
- Two Large Living Rooms
- Large Rear Garden
- Book Your Viewings Today
- Open Plan Kitchen
- Off Street Parking For Up To Five Cars



Total area: approx. 165.4 sq. metres (1780.7 sq. feet)

THE FLOORPLAN IS FOR ILLUSTRATIVE PURPOSES ONLY AND IS NOT TO SCALE. Measurements and features are approximate and may differ from the actual property. Verify all details independently; no liability is accepted for errors or omissions.

Property marketing provided by www.fotomarketing.co.uk



Directions

Viewings

Viewings by arrangement only. Call 01992 470335 to make an appointment.

Council Tax Band

EPC Rating:

D

Energy Efficiency Rating		
	Current	Potential
Very energy efficient - lower running costs		
(92 plus) A		
(81-91) B		
(69-80) C		
(55-68) D	65	
(39-54) E		
(21-38) F		
(1-20) G		
Not energy efficient - higher running costs		
England & Wales	EU Directive 2002/91/EC	