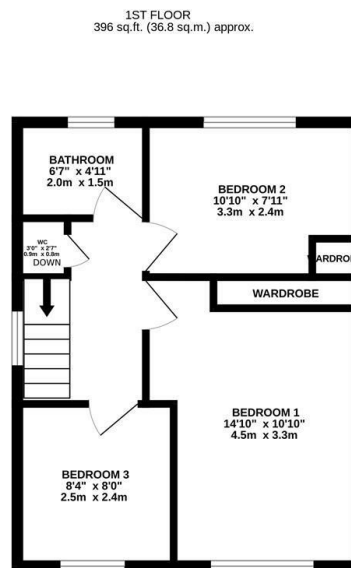
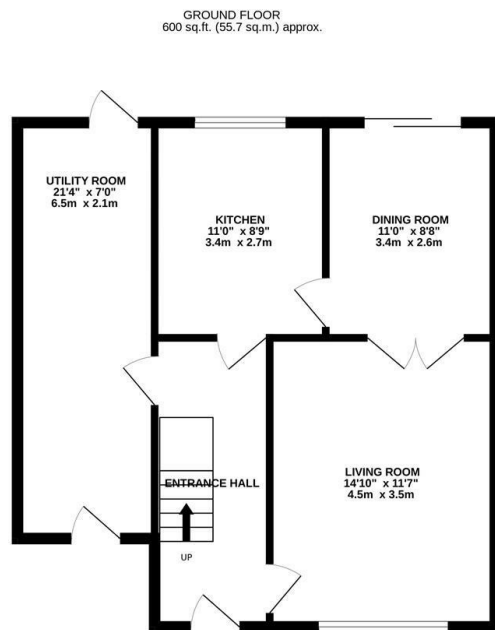




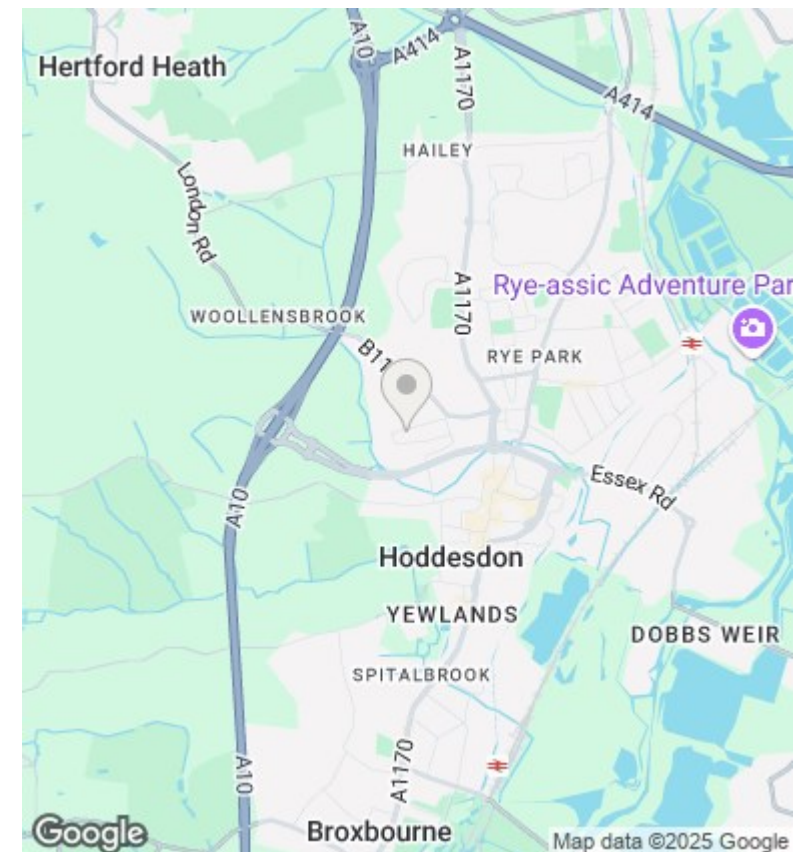
## 29 Saffron Close, Hoddesdon, EN11 8QZ

Asking Price £425,000

- Three Bedroom House
- Good Sized Rear Garden
- Off Street Parking
- Being Sold Chain Free
- Utility Room
- Book Your Viewings Today
- Spacious Living Room
- Opportunities to Develop



TOTAL FLOOR AREA: 996 sq.ft. (92.5 sq.m.) approx.  
Whilst every attempt has been made to ensure the accuracy of the floorplan contained here, measurements of doors, windows, rooms and any other items are approximate and no responsibility is taken for any error, omission or mis-statement. This plan is for illustrative purposes only and should be used as such by any prospective purchaser. The services, systems and appliances shown have not been tested and no guarantee as to their operability or efficiency can be given.  
Made with Metropix ©2024



## Directions

## Viewings

Viewings by arrangement only. Call 01992 470335 to make an appointment.

## Council Tax Band

D

## EPC Rating:

C

Energy Efficiency Rating		
	Current	Potential
Very energy efficient - lower running costs		
(92 plus) <b>A</b>		85
(81-91) <b>B</b>		
(69-80) <b>C</b>	71	
(55-68) <b>D</b>		
(39-54) <b>E</b>		
(21-38) <b>F</b>		
(1-20) <b>G</b>		
Not energy efficient - higher running costs		
<b>England &amp; Wales</b>	EU Directive 2002/91/EC	