



Lunardi Court, Puckeridge, SG11 1UT

£365,000

- Extended Two Bedroom House
- Dining Room Extension
- Secluded West Facing Rear Garden
- Downstairs Cloakroom
- Walking Distance to Amenities
- Allocated & Visitor Parking
- Modern Kitchen with Quartz Worktops
- Luxury Bathroom

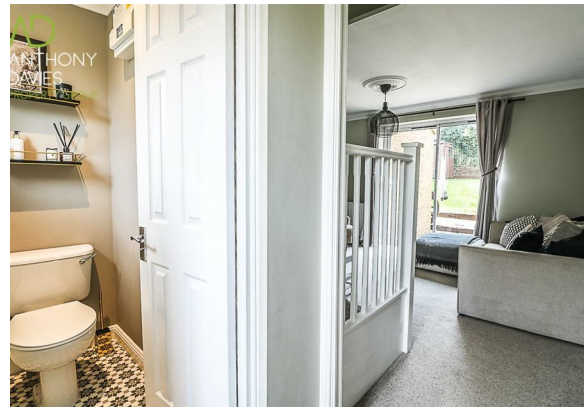
Lunardi Court, Puckeridge

A superb two bedroom extended house nicely positioned on an attractive modern development and conveniently located within walking distance to village shops, pubs and highly regarded schools. The property has recently been refurbished with accommodation including downstairs cloakroom, living room, modern kitchen with Quartz worktops, gas combi-boiler, pitched roof dining room, two bedrooms, and luxury bathroom.

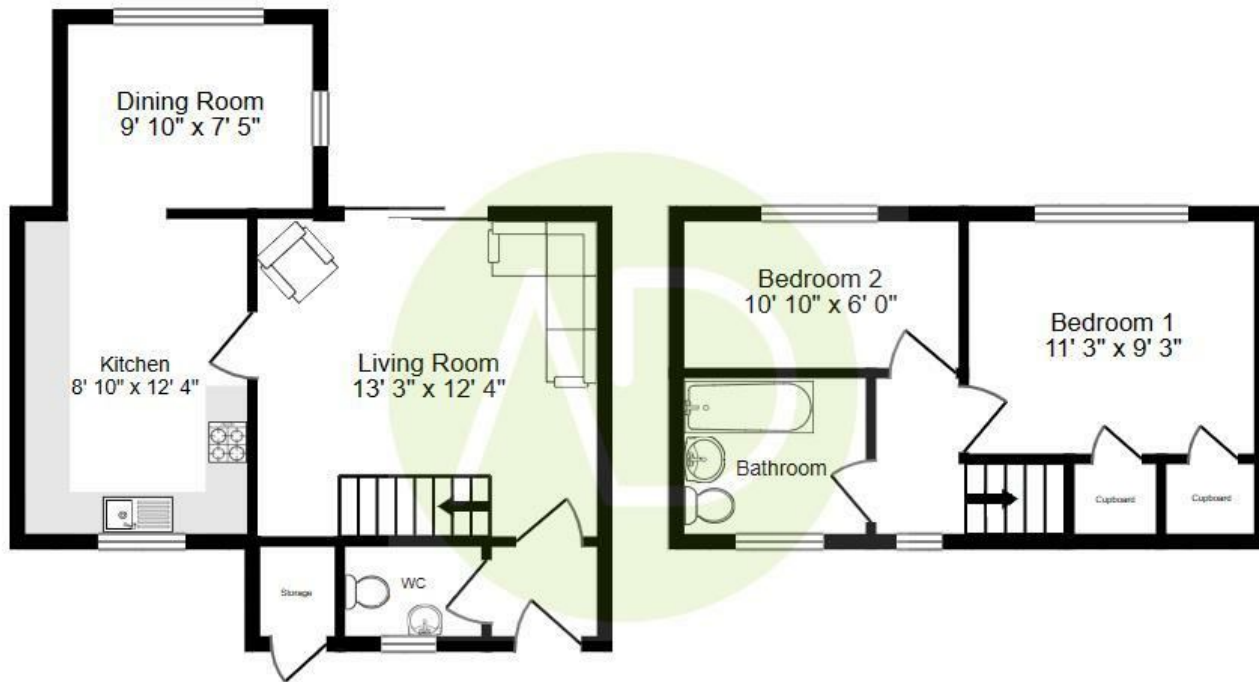
Externally boasts a secluded west facing rear garden with outside tap and power points, front garden, external bin storage cupboard, allocated parking space just a few yards away with further visitor parking. A viewing is highly recommended.



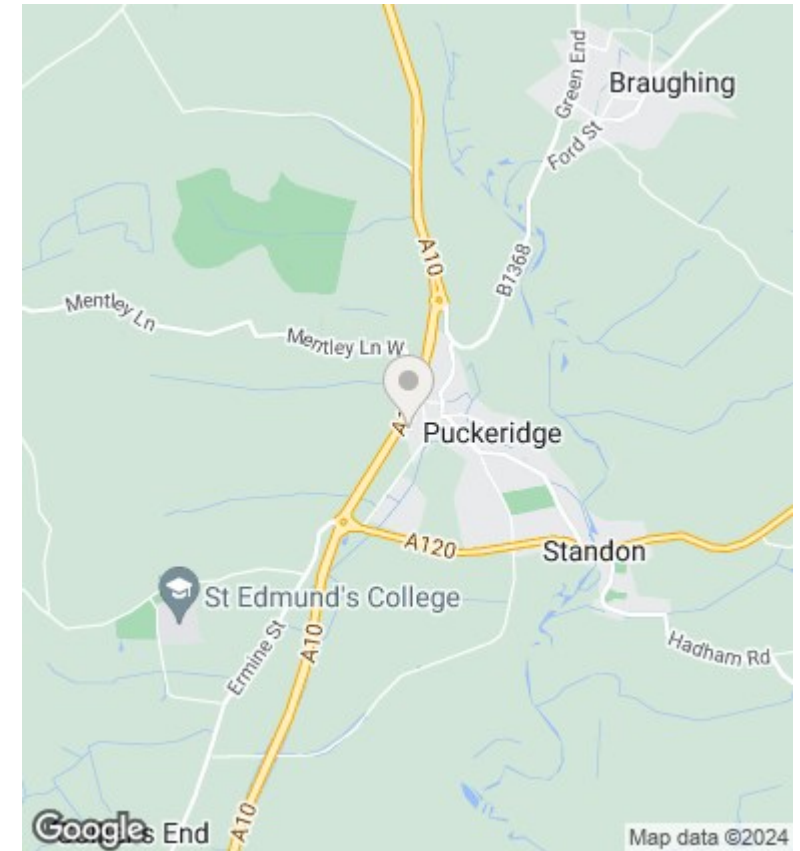








Whilst every attempt has been made to ensure the accuracy of the floor plan contained here, measurements of doors, windows, rooms and any other items are approximate and no responsibility is taken for any error, omission, or mis-statement. This plan is for illustrative purposes only and should be used as such by any prospective purchaser. The services, systems and appliances shown have not been tested and no guarantee as to their operability or efficiency can be given.



Viewings

by arrangement only. Call 01992 470335 to make an appointment.