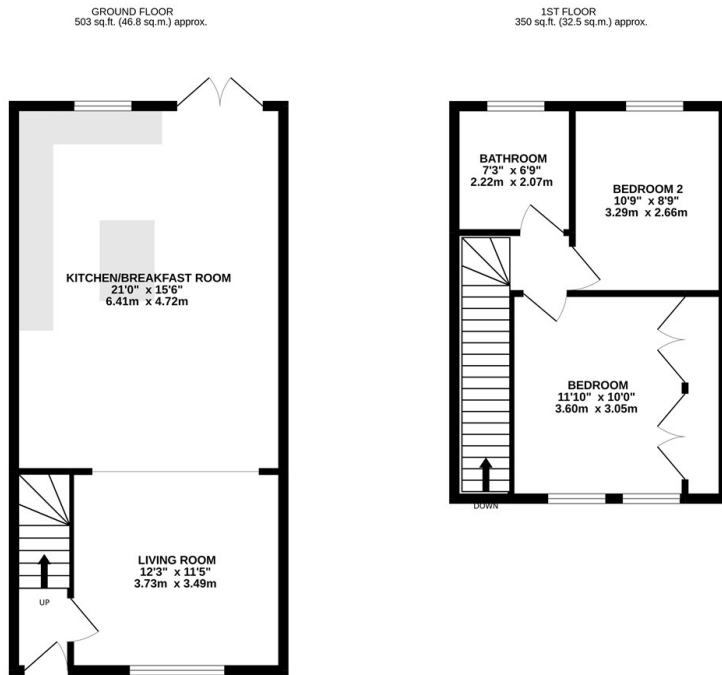




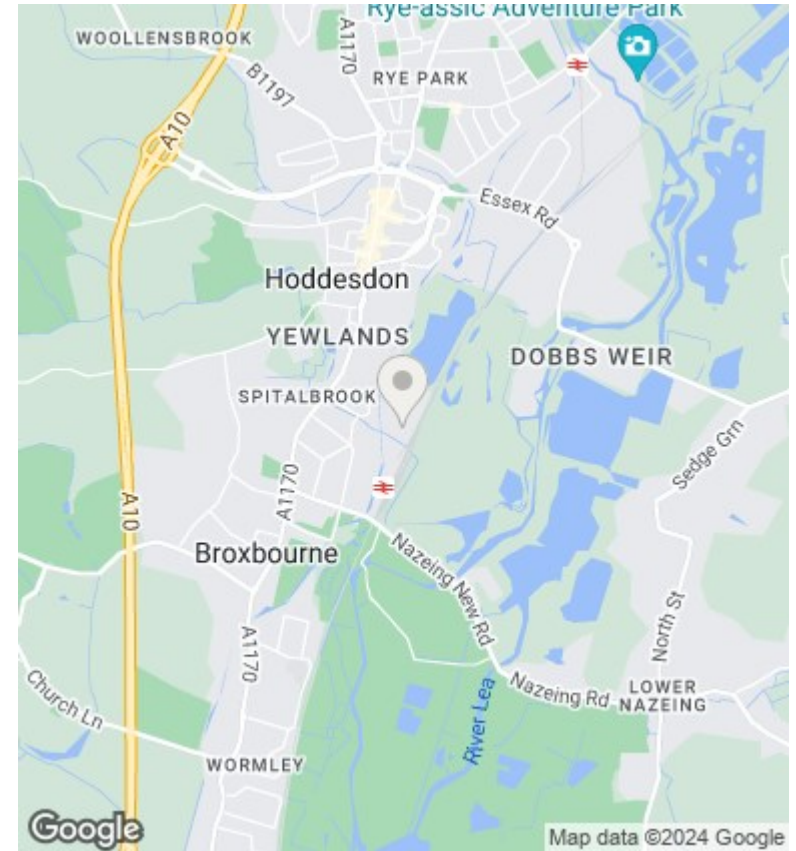
13 Meadway, Hoddesdon, EN11 8AP

Asking Price £415,000

- Two Bedroom House
- Open Plan Extended Kitchen
- Offered Chain Free
- Spacious Living Accomodation
- Large Rear Garden
- Book Your Viewings Today
- Walking Distance to Broxbourne Station
- Two Spacious Bedrooms



TOTAL FLOOR AREA: 853 sq.ft. (79.3 sq.m.) approx.
Whilst every attempt has been made to ensure the accuracy of the floorplan contained herein, measurements of doors, windows, rooms and any other items are approximate and no responsibility is taken for any error, omission or misstatement. This plan is for guidance purposes only and should be used as such by any prospective purchaser. The services, systems and appliances shown have not been tested and no guarantee as to their operability or efficiency can be given.
 Made with Metropix 12/2022



Directions

Viewings

Viewings by arrangement only. Call 01992 470335 to make an appointment.

Council Tax Band

EPC Rating:

D

Energy Efficiency Rating		Current	Potential
<i>Very energy efficient - lower running costs</i>			
(92 plus) A			86
(81-91) B			
(69-80) C			
(55-68) D		67	
(39-54) E			
(21-38) F			
(1-20) G			
<i>Not energy efficient - higher running costs</i>			
England & Wales		EU Directive 2002/91/EC	