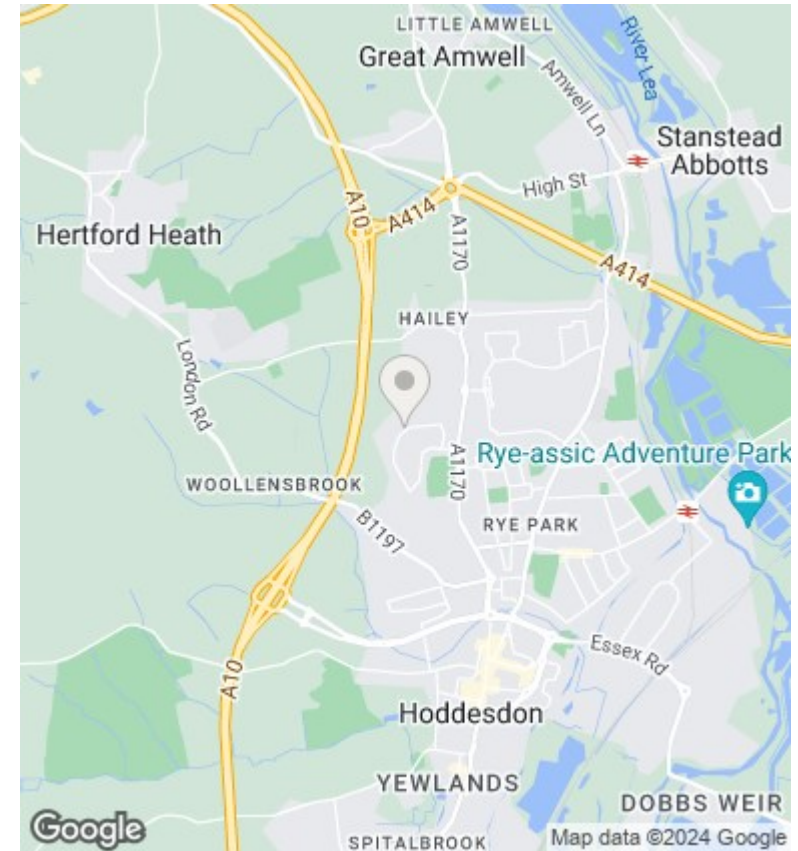
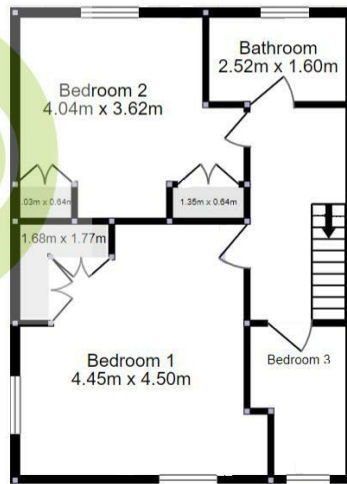
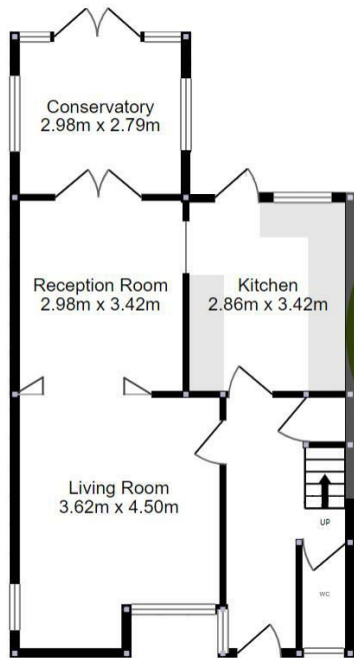




82 High Wood Road, Hoddesdon, EN11 9AP

Offers In Excess Of £500,000

- Very Well Presented Three Bedroom Family Home
- Downstairs WC & Conservatory
- Chain Free
- Ample Off Street Parking
- Good Sized South West Facing Rear Garden
- Book Your Viewings Today
- Spacious Kitchen
- Easily Accessible to Schools & Bus Stops



Directions

Viewings

Viewings by arrangement only. Call 01992 470335 to make an appointment.

Council Tax Band

EPC Rating:

Energy Efficiency Rating		Current	Potential
<i>Very energy efficient - lower running costs</i>			
(92 plus) A			
(81-91) B			
(69-80) C			
(55-68) D			
(39-54) E			
(21-38) F			
(1-20) G			
<i>Not energy efficient - higher running costs</i>			
England & Wales		EU Directive 2002/91/EC	