



## Isla-Alexander

Isla Alexander, Lambourne House, Lambourne Crescent - CF14 5GL

07817727321 • [lynne@isla-alexander.com](mailto:lynne@isla-alexander.com) • [www.isla-alexander.com](http://www.isla-alexander.com)



## 26 Prince Charles Avenue

Minster On Sea, Sheerness

OPEN HOUSE SATURDAY 17TH AUGUST BY APPOINTMENT. 3 bed family home near amenities. Refitted bathroom, spacious lounge/diner. Generous garden with rear access. No property chain. Ideal for young family/1st-time buyers. Ready to move in and personalise. Make it yours today!

Council Tax band: B

Tenure: Freehold

EPC Energy Efficiency Rating: D

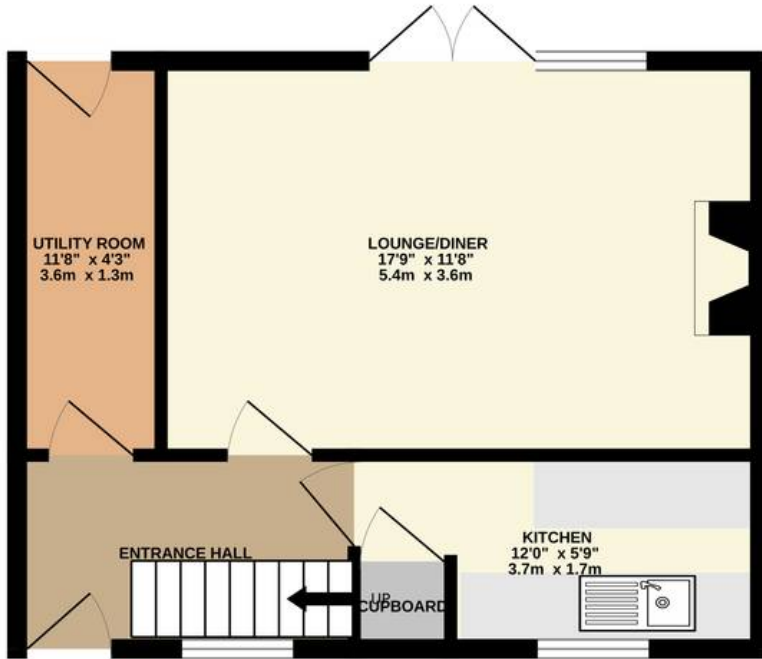
EPC Environmental Impact Rating:

- 3 bedroom family home
- Close to shops, schools and amenities
- Refitted family bathroom
- Spacious Lounge/Diner with French doors to garden
- Rear access from generous garden
- Off road parking
- No chain
- Freshly redecorated
- Ideal first time buy for a young family

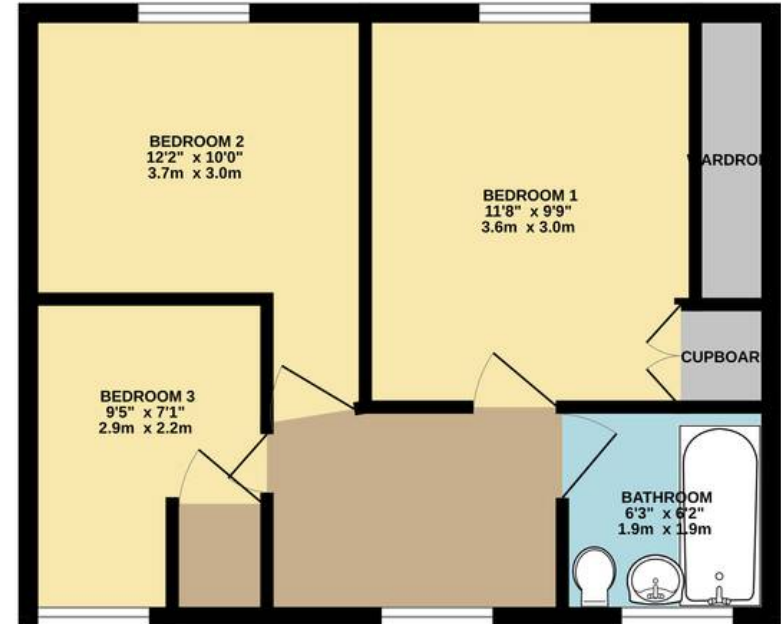




GROUND FLOOR  
377 sq.ft. (35.0 sq.m.) approx.



1ST FLOOR  
394 sq.ft. (36.6 sq.m.) approx.



3 BEDROOM

TOTAL FLOOR AREA : 771 sq.ft. (71.6 sq.m.) approx.

Whilst every attempt has been made to ensure the accuracy of the floorplan contained here, measurements of doors, windows, rooms and any other items are approximate and no responsibility is taken for any error, omission or mis-statement. This plan is for illustrative purposes only and should be used as such by any prospective purchaser. The services, systems and appliances shown have not been tested and no guarantee as to their operability or efficiency can be given.  
Made with Metropix ©2024





## Isla-Alexander

Isla Alexander, Lambourne House, Lambourne Crescent - CF14 5GL

07817727321

[lynne@isla-alexander.com](mailto:lynne@isla-alexander.com)

[www.isla-alexander.com](http://www.isla-alexander.com)