

BRENNAN

BESPOKE

£300,000
Knighton Close
Burton Latimer, NN15 5FY

PROPERTY SUMMARY

This charming three-bedroom semi-detached home in the heart of Burton Latimer offers spacious and modern living, ideal for families or couples. Upon entering, you're greeted by a welcoming hallway, leading to a convenient downstairs WC and a generously sized kitchen/diner. The kitchen, fitted with contemporary units, has ample space for dining and boasts stylish French doors that open directly onto the garden, creating a perfect space for indoor-outdoor living and entertaining. Adjacent to the kitchen/diner is the lounge which is a cosy retreat featuring another set of doors opening to the garden, allowing natural light to flood the room and offering easy access to the outdoors. Upstairs, the home features two double bedrooms and a well-proportioned single bedroom, perfect for a child, guest room, or home office. The master bedroom benefits from an ensuite shower room, providing privacy and comfort. A modern family bathroom serves the remaining bedrooms. Externally, the property continues to impress. The larger-than-average garage provides ample storage or parking space, while the driveway offers additional off-road parking. The garden is a good size, offering plenty of space for family gatherings, gardening, or simply relaxing outdoors. Situated in a sought-after area of Burton Latimer, the house enjoys a peaceful location with local amenities and transport links nearby, making it an excellent choice for those seeking both tranquility and convenience. This home combines style, comfort, and practicality, offering a wonderful space to grow and create lasting memories.

3



2



1



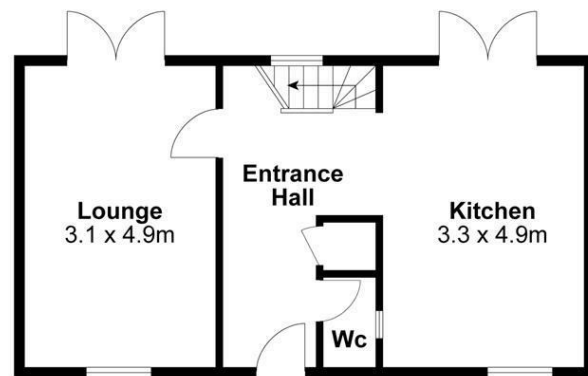


OFFICE ADDRESS

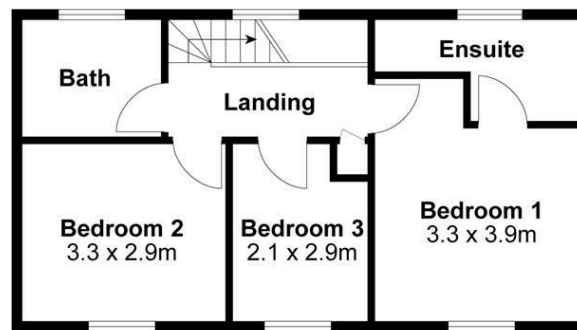
BRENNAN BESPOKE
2 The Tithe Barn Glendon Lodge Farm
Glendon
Kettering
Northamptonshire
NN14 1QF

OFFICE DETAILS

01536 904400
info@brennanbespoke.co.uk
<https://www.brennanbespoke.co.uk>



Ground Floor



First Floor

For identification only not to scale

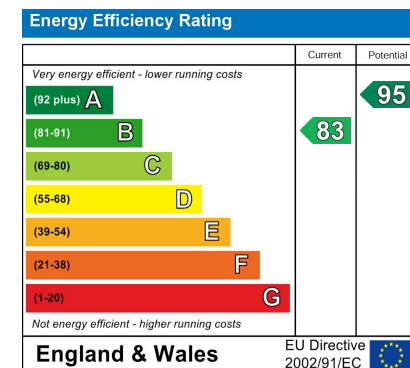
BRENNAN
BESPOKE

LOCAL AUTHORITY
North Northamptonshire

TENURE
Freehold

COUNCIL TAX BAND
C

VIEWINGS
By prior appointment only



Agents Note: Whilst every care has been taken to prepare these particulars, they are for guidance purposes only. All measurements are approximate and are for general guidance purposes only and whilst every care has been taken to ensure their accuracy, they should not be relied upon and potential buyers/tenants are advised to recheck the measurements