

BRENNAN

BESPOKE

£325,000

Thornton Avenue

Hanwood Park, Barton Seagrave, NN15 6QN

This versatile four-bedroom, three-storey family home is located in the desirable Hanwood Park development in Barton Seagrave. The modern property welcomes you with an inviting entrance hall and a convenient cloakroom. The stylish kitchen diner, ideal for family meals, features contemporary fittings. The lounge, with French doors, opens onto a beautifully maintained wall enclosed garden, perfect for outdoor living. The first floor comprises three generously sized bedrooms, offering ample space for a growing family, and a fully tiled family bathroom. The second floor is dedicated to the impressive main bedroom, which boasts a spacious layout and a private en-suite bathroom. Outside, the property features a modern, tiled patio and a well-kept lawn, providing a tranquil space for relaxation or entertainment. The rear of the property offers access to the driveway, leading to a single garage with off-road parking, ensuring convenience and security. This home is ideal for families seeking comfort, modern amenities, and a prime location in Barton Seagrave.

4



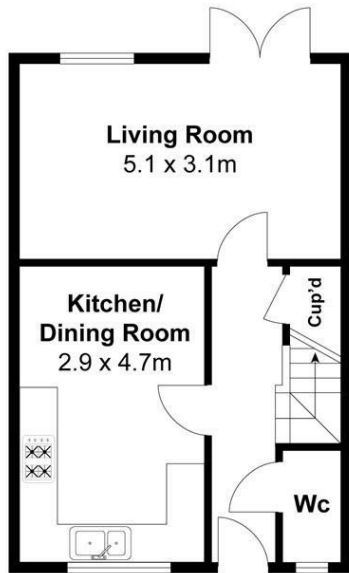
2



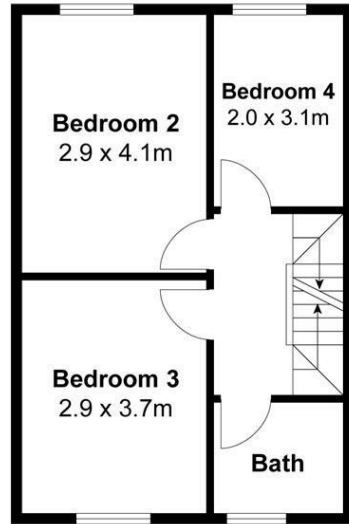
nuff



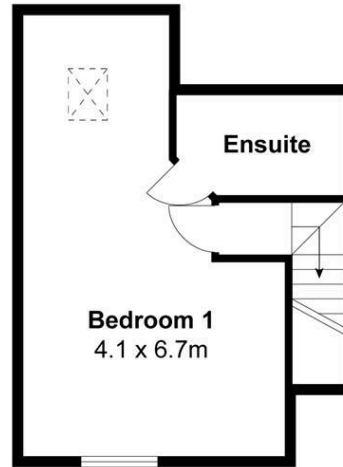




Ground Floor



First Floor



Second Floor

For identification only not to scale

BRENNAN
BESPOKE

OFFICE ADDRESS
BRENNAN BESPOKE
2 The Tithe Barn Glendon Lodge Farm
Glendon
Kettering
Northamptonshire
NN14 1QF

OFFICE DETAILS
01536 904400
info@brennanbespoke.co.uk
<https://www.brennanbespoke.co.uk>

LOCAL AUTHORITY

TENURE

COUNCIL TAX BAND

VIEWINGS

By prior appointment only

Energy Efficiency Rating		
	Current	Potential
<i>Very energy efficient - lower running costs</i>		
(92 plus) A		
(81-91) B		
(69-80) C		
(55-68) D		
(39-54) E		
(21-38) F		
(1-20) G		
<i>Not energy efficient - higher running costs</i>		
England & Wales	EU Directive 2002/91/EC	

Agents Note: Whilst every care has been taken to prepare these particulars, they are for guidance purposes only. All measurements are approximate and are for general guidance purposes only and whilst every care has been taken to ensure their accuracy, they should not be relied upon and potential buyers/tenants are advised to recheck the measurements