

Leatherbottle Lane, Chichester, PO19 7DB

£1,400 Per month

EPC Rating: Council Tax Band: C





1 Leatherbottle Lane, Chichester, PO19 7DB

£1,400 Per month

Council Tax Band: C

Newly refurbished 3-bed semi in Leatherbottle Lane, Chichester. Features a brand-new fitted kitchen, new carpets, shared driveway and patio garden. Upstairs offers two double bedrooms, a single room and a modern family bathroom. Ready to move into.

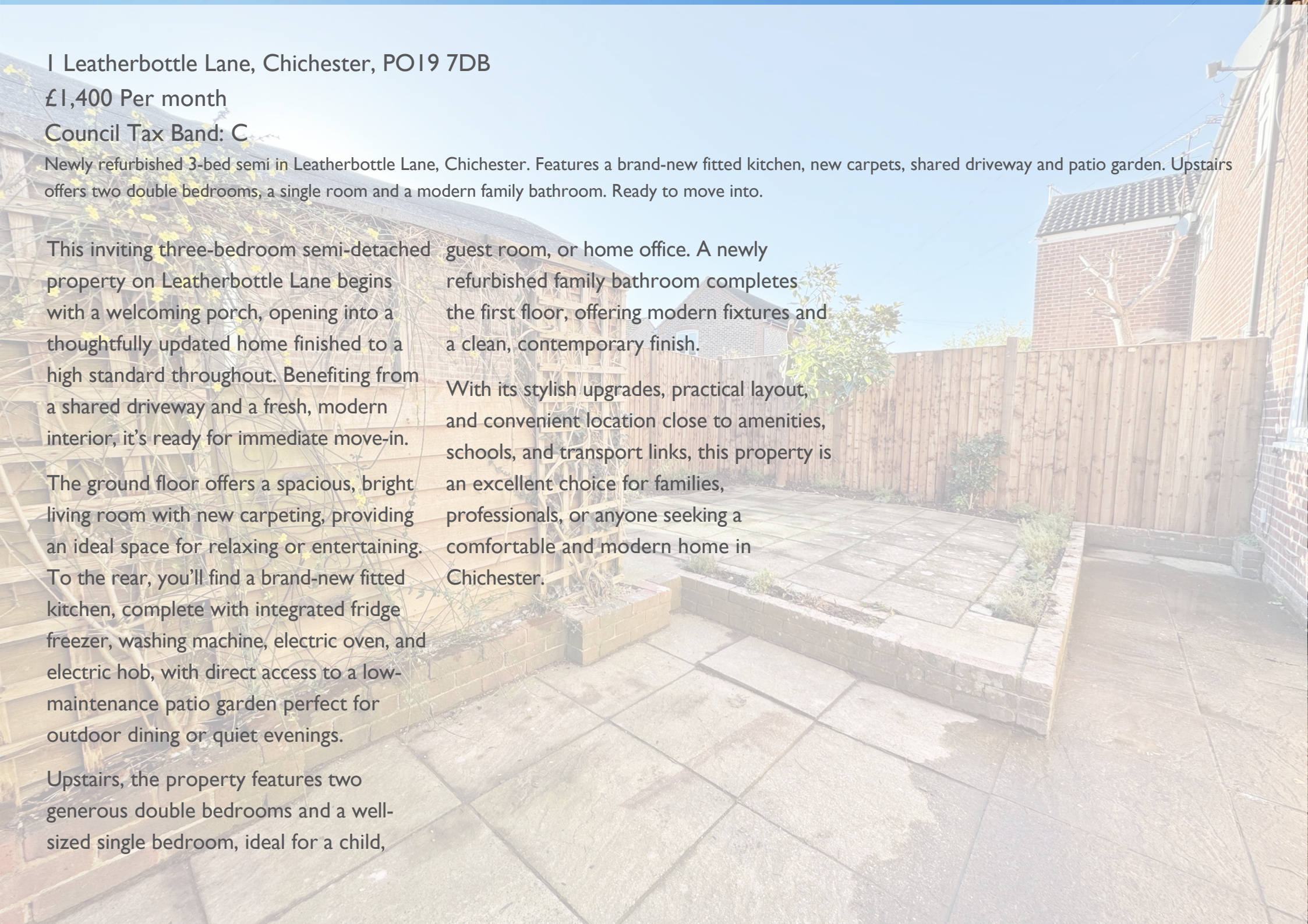
This inviting three-bedroom semi-detached property on Leatherbottle Lane begins with a welcoming porch, opening into a thoughtfully updated home finished to a high standard throughout. Benefiting from a shared driveway and a fresh, modern interior, it's ready for immediate move-in.

The ground floor offers a spacious, bright living room with new carpeting, providing an ideal space for relaxing or entertaining. To the rear, you'll find a brand-new fitted kitchen, complete with integrated fridge freezer, washing machine, electric oven, and electric hob, with direct access to a low-maintenance patio garden perfect for outdoor dining or quiet evenings.

Upstairs, the property features two generous double bedrooms and a well-sized single bedroom, ideal for a child,

guest room, or home office. A newly refurbished family bathroom completes the first floor, offering modern fixtures and a clean, contemporary finish.

With its stylish upgrades, practical layout, and convenient location close to amenities, schools, and transport links, this property is an excellent choice for families, professionals, or anyone seeking a comfortable and modern home in Chichester.









The Old Boathouse Bosham Lane

Bosham

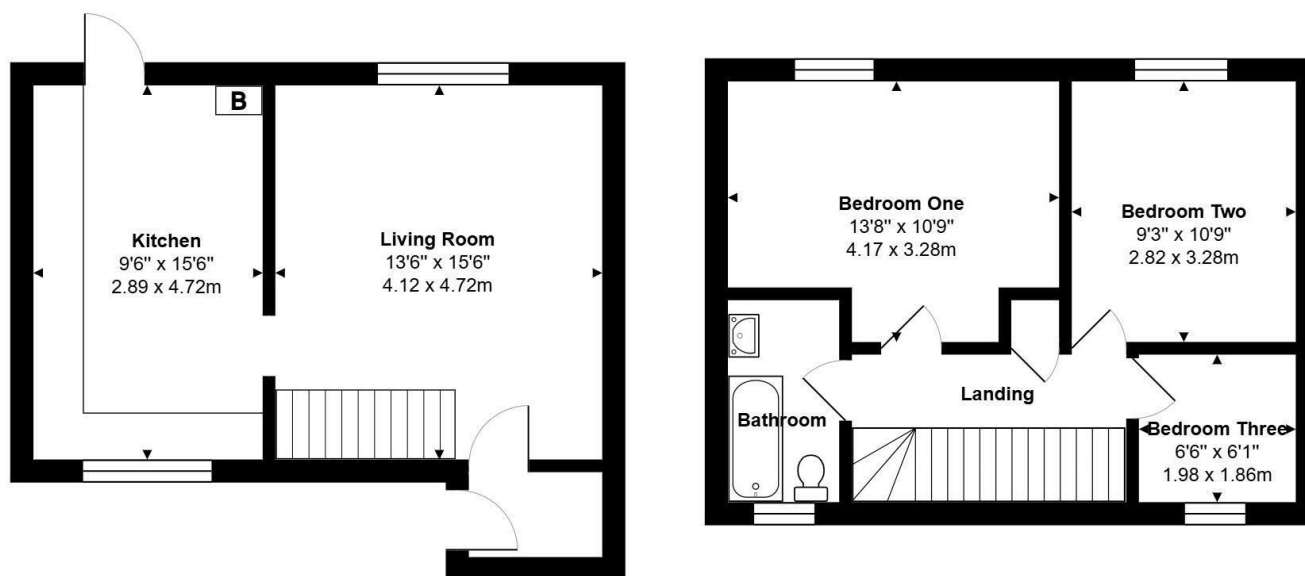
West Sussex

PO18 8HS

01243 624637

info@soloestates.co.uk

www.soloestates.co.uk



Total Area: 794 ft² ... 73.8 m²

| Energy Efficiency Rating                    |         |                         |
|---|---------|-------------------------|
|   | Current | Potential               |
| Very energy efficient - lower running costs |         |                         |
| (92 plus) <b>A</b>                          |         |                         |
| (81-91) <b>B</b>                            |         |                         |
| (69-80) <b>C</b>                            |         |                         |
| (55-68) <b>D</b>                            |         |                         |
| (39-54) <b>E</b>                            |         |                         |
| (21-38) <b>F</b>                            |         |                         |
| (1-20) <b>G</b>                             |         |                         |
| Not energy efficient - higher running costs |         |                         |
| England & Wales                             |         | EU Directive 2002/91/EC |