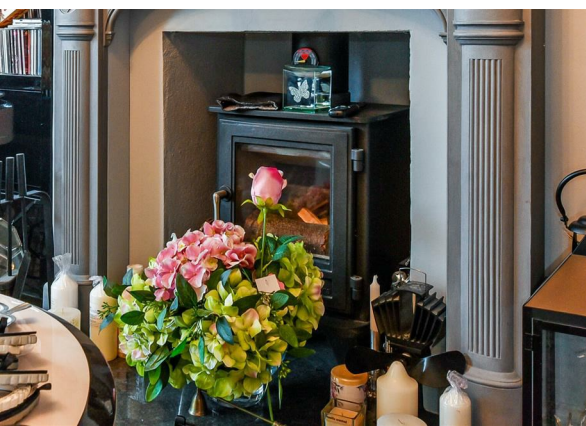
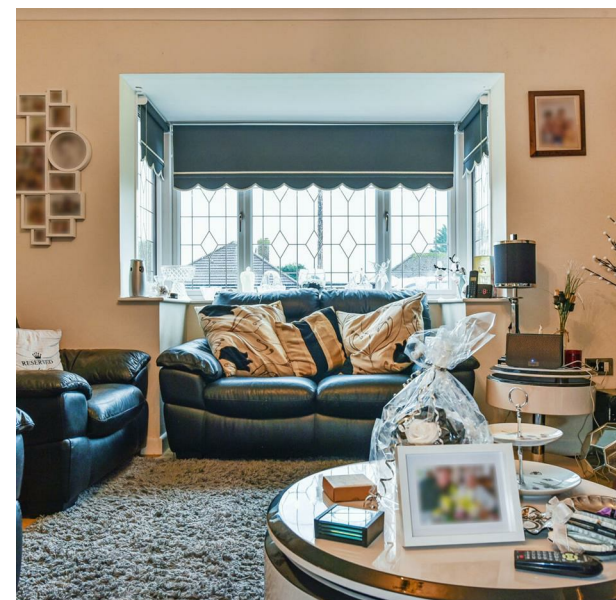


22 Robins Drive, Bognor Regis, PO21 3BL

£390,000

EPC Rating: D Council Tax Band: D





22 Robins Drive, Bognor Regis, PO21 3BL

£390,000

Council Tax Band: D

Charming two-bedroom detached bungalow in a peaceful Rose Green cul-de-sac. Bright living spaces, modern kitchen, conservatory, private gardens, and ample parking. Ideally located near shops, cafés, and coastal walks — perfect for relaxed, convenient coastal living.

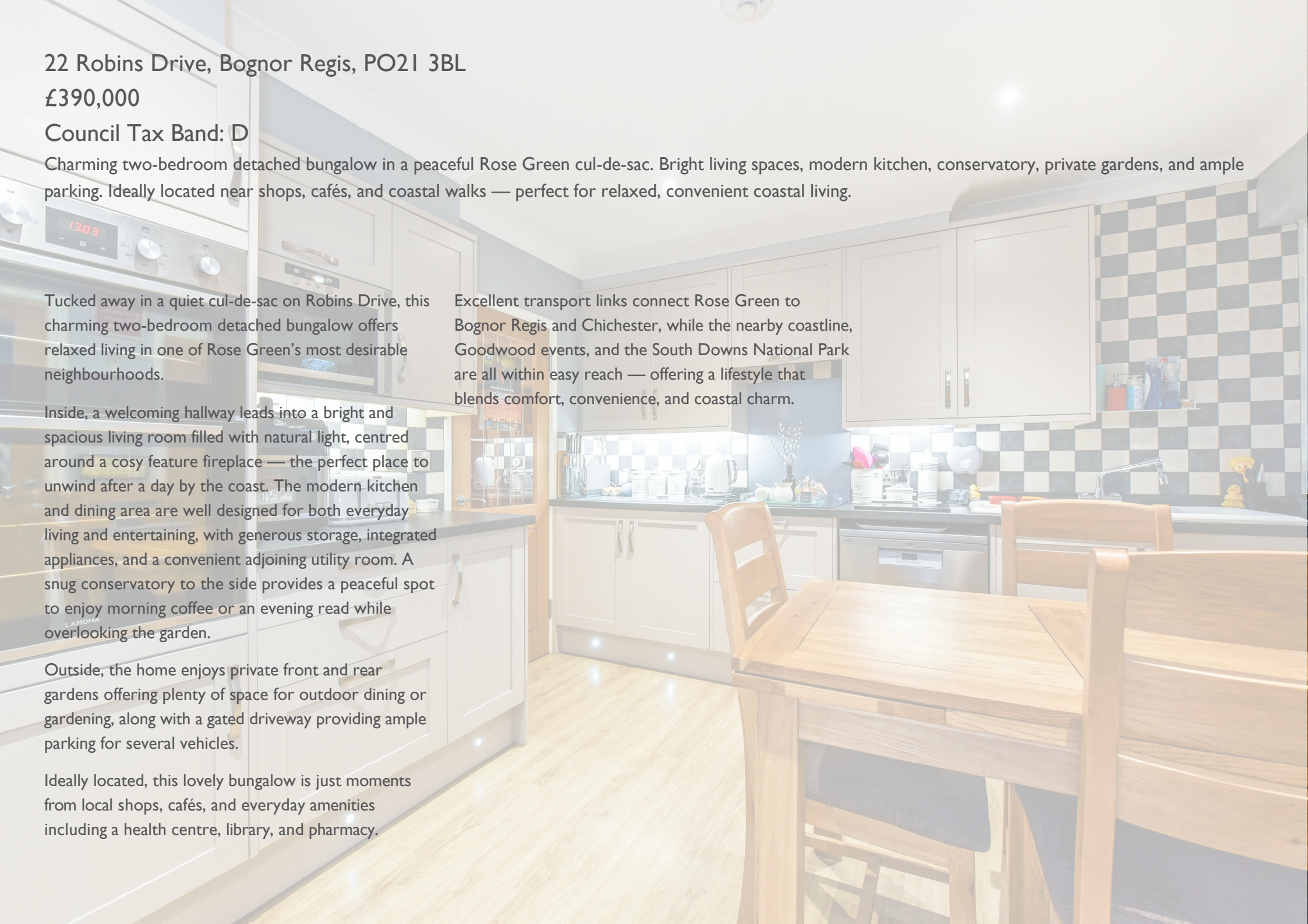
Tucked away in a quiet cul-de-sac on Robins Drive, this charming two-bedroom detached bungalow offers relaxed living in one of Rose Green's most desirable neighbourhoods.

Inside, a welcoming hallway leads into a bright and spacious living room filled with natural light, centred around a cosy feature fireplace — the perfect place to unwind after a day by the coast. The modern kitchen and dining area are well designed for both everyday living and entertaining, with generous storage, integrated appliances, and a convenient adjoining utility room. A snug conservatory to the side provides a peaceful spot to enjoy morning coffee or an evening read while overlooking the garden.

Outside, the home enjoys private front and rear gardens offering plenty of space for outdoor dining or gardening, along with a gated driveway providing ample parking for several vehicles.

Ideally located, this lovely bungalow is just moments from local shops, cafés, and everyday amenities including a health centre, library, and pharmacy.

Excellent transport links connect Rose Green to Bognor Regis and Chichester, while the nearby coastline, Goodwood events, and the South Downs National Park are all within easy reach — offering a lifestyle that blends comfort, convenience, and coastal charm.









The Old Boathouse Bosham Lane  
Bosham  
West Sussex  
PO18 8HS  
01243 624637  
info@soloestates.co.uk  
www.soloestates.co.uk

