



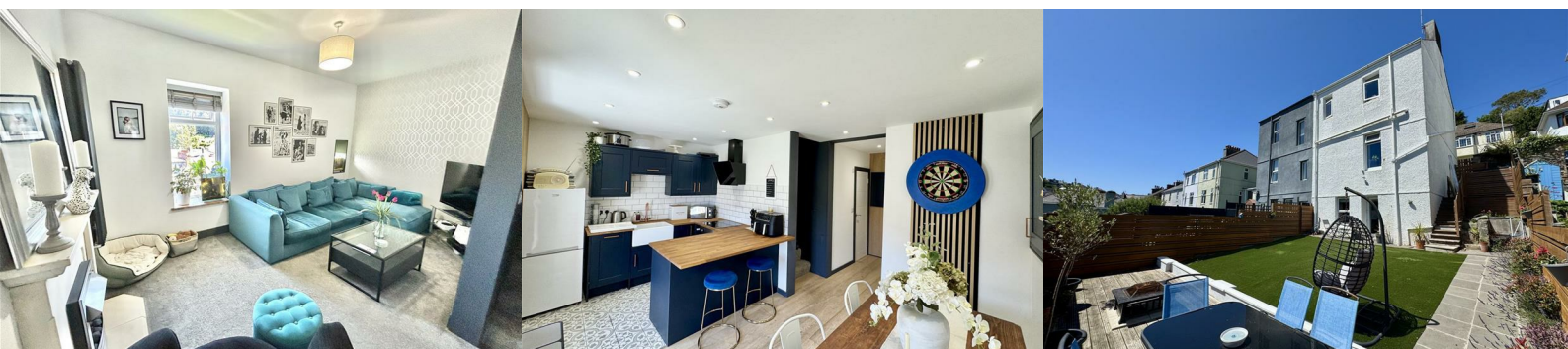
20 Park Road

Lower Compton, Plymouth, PL3 5DR

Guide Price £325,000



GUIDE PRICE £325,000 - £340,000. A well-presented semi-detached house built c1906. Characterful & comfortably appointed re-modelled 3-storey accommodation benefitting from uPVC double-glazing & gas central heating. The accommodation comprises a 24ft spacious lounge/study/reception room, modern fitted kitchen/dining room, downstairs utility/wc, 3 bedrooms & a well-appointed family bathroom/wc. Externally there is private parking with space for 3 vehicles & side access to a southerly-facing low maintenance enclosed rear garden.



PARK ROAD, LOWER COMPTON, PLYMOUTH, PL3 5DR
GUIDE PRICE £325,000 - £340,000

SUMMARY

A period built late Victorian semi-detached c1906 arranged over 3 levels. The property has been upgraded, improved and re-modelled in the past. Now providing a comfortably appointed and well-presented light and airy home. There is gas central heating and double-glazing. The accommodation comprises a porch, a generous-sized living room incorporating a lounge and study areas, a staircase rising to the first floor and descending to the lower ground floor. On the first floor there are 3 bedrooms, access to the insulated loft and a well-appointed family bathroom/wc. At lower ground floor level there is a spacious open-plan kitchen/dining room with a window and a glazed door overlooking the rear garden. The kitchen is modern and fitted with new oak staves work surfaces and integrated appliances. There is a cupboard housing the Ideal gas boiler servicing the central heating and the domestic hot water. There is a useful utility room/wc with a wc, wash hand basin and space for a washing machine/tumble dryer.

Externally, wide parking to the front for 3 cars side by side and a wide stepped side access pathway. To the rear there is a delightful low maintenance landscaped southerly-facing near level enclosed garden.

LOCATION

Tucked away in this private road off Park Road in this popular residential area of Lower Compton with a wide variety of local services and amenities found near by.

ACCOMMODATION

GROUND FLOOR

ENTRANCE LOBBY 8' x 3'9 (2.44m x 1.14m)

LIVING ROOM 23'10 x 15'11 max dimensions (7.26m x 4.85m max dimensions)

Incorporating a lounge area with fireplace/reception area to the front. Staircase rising to the first floor and descending to the lower ground floor.

FIRST FLOOR

LANDING

BEDROOM ONE 17'1 x 7'10 (5.21m x 2.39m)

2 windows to the front elevation. Range of built-in storage.

BEDROOM TWO 11'2 x 6'11 (3.40m x 2.11m)

Window to the rear elevation with long views.

BEDROOM THREE 9'8 x 5'10 (2.95m x 1.78m)

Window to the rear elevation with long views.

BATHROOM 9' x 6'4 (2.74m x 1.93m)

Quality-fitted bathroom with bath, wc and wash hand basin.

LOWER GROUND FLOOR

KITCHEN/DINING ROOM 15'9 x 10'5 in part x 17'10 max (4.80m x 3.18m in part x 5.44m max)

Quality modern fitted integrated kitchen with Belfast-style under-mounted sink and electric 4-ring hob with an extractor hood over and an electric oven under. Cupboard housing the Ideal gas-fired boiler servicing the central heating and domestic hot water. Window and glazed door opening to the rear garden.

UTILITY ROOM/WC 5'8 x 4'7 (1.73m x 1.40m)

White modern wc and wash hand basin. Space and plumbing for washing machine and tumble dryer.

EXTERNALLY

To the front a wide parking bay with space for 3 vehicles side by side. Wide side access with a stepped area and storage space leading to the rear garden. The rear garden is near level and laid to artificial lawn and a wide decked patio. The garden is southerly-facing and ideal for al fresco entertaining, enjoying day long sunshine.

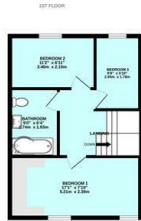
COUNCIL TAX

Plymouth City Council
Council tax band B

Area Map

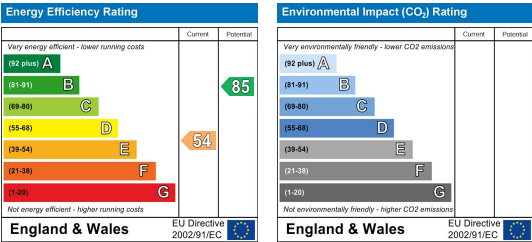


Floor Plans



Made with Mergim C2025

Energy Efficiency Graph



These particulars, whilst believed to be accurate are set out as a general outline only for guidance and do not constitute any part of an offer or contract. Intending purchasers should not rely on them as statements of representation of fact, but must satisfy themselves by inspection or otherwise as to their accuracy. No person in this firms employment has the authority to make or give any representation or warranty in respect of the property.