



6 Venn Court

Hartley, Plymouth, PL3 5NS

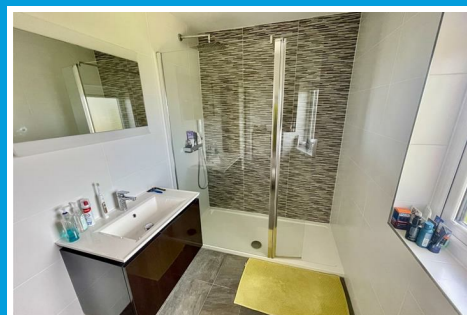
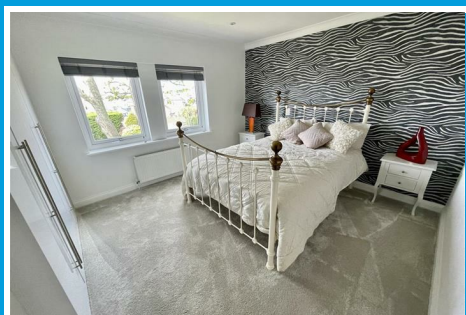
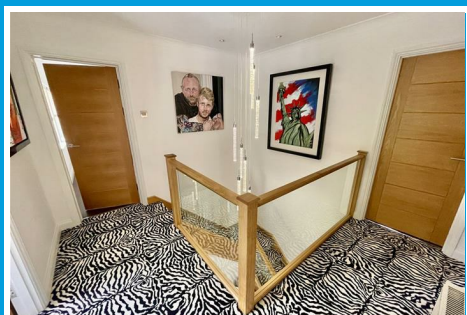
Offers In Excess Of £700,000



6 Venn Court

Hartley, Plymouth, PL3 5NS

Offers In Excess Of £700,000



VENN COURT, HARTLEY, PLYMOUTH, PL3 5NS

SUMMARY

The property thought to have been built in the 1980s & over the last 10 years extensively upgraded, improved & refurbished. Major works have included roof upgrade, replacement of fascias, soffits & gutters, new quality windows & doors, new electrics & plumbing, upgrading of bathroom, en-suite & downstairs wc & new fitted kitchen with integrated appliances. A double garage having up & over remote controlled door, heavily insulated roof with one hour fire rating & resin floor. Great curb appeal with pleasing front appearance. No onward chain.

LOCATION

Found towards the end of the cul-de-sac in Venn Court with the benefit of excellent off-street parking for 3/4 vehicles & within the double garage. Set in this prime, popular, residential area of Hartley with a good variety of local services & amenities found nearby. The position convenient for access into the city & close by connection to major routes in other directions.

ACCOMMODATION

On the ground floor with entrance porch, spacious reception hall with galleried landing, attractive open glass & hard wood staircase detailing, a spacious through lounge/dining room with French doors opening to a rear set patio. Downstairs wc. Quality fitted integrated kitchen with an excellent range of appliances including 4 ovens including microwave & combination oven, Neff upright fridge/freezer & Neff 5 ring induction hob with Neff extractor hood over & Neff dishwasher. Blanco under mounted sink with macerator & quoker

boiling water tap & wine chiller. Useful laundry/utility room with under-mounted sink, space for a washing machine & tumble dryer. Large double garage with pressurised heating system, wall mounted Worcester boiler, 250L large capacity Biasi hot water tank.

At first floor level a landing with large airing cupboard. A spacious master bedroom with built-in wardrobes into a dressing room with fitted storage into the en-suite shower room with large shower, wc & wash hand basin. 3 further double bedrooms, 2 with fitted wardrobes & a 5th bedroom/study. A well appointed family bathroom with bath, wc & wash hand basin.

Externally excellent parking on the wide drive with space for various vehicles. To the rear a landscaped, enclosed, south westerly facing garden with wide patio, rockery & lawned areas.

GROUND FLOOR

ENTRANCE PORCH

9'10 x 6'5 maximum (3.00m x 1.96m maximum)

RECEPTION HALL

13'6 x 10'3 maximum (4.11m x 3.12m maximum)

WC

7'1 x 4' maximum (2.16m x 1.22m maximum)

LOUNGE/DINING ROOM

29' x 13'3 (8.84m x 4.04m)

KITCHEN

12'8 x 10'3 (3.86m x 3.12m)

UTILITY ROOM

7'9 x 4'6 (2.36m x 1.37m)

DOUBLE GARAGE
17'8 x 16'6 (5.38m x 5.03m)

FIRST FLOOR

LANDING

MASTER BEDROOM
16'5 x 11'10 (5.00m x 3.61m)

DRESSING ROOM
6'3 x 5'9 (1.91m x 1.75m)

EN-SUITE SHOWER ROOM
9'6 x 5'8 (2.90m x 1.73m)

BEDROOM TWO
13'2 x 12'9 maximum (4.01m x 3.89m maximum)

BEDROOM THREE
12'10 x 10'4 (3.91m x 3.15m)

BEDROOM FOUR
13'1 x 10'9 (3.99m x 3.28m)

BEDROOM FIVE/STUDY
10'4 x 5' (3.15m x 1.52m)

BATHROOM
9'6 x 6'1 (2.90m x 1.85m)

COUNCIL TAX
Plymouth City Council
Council Tax Band: G

SERVICES PLYMOUTH
The property is connected to all the mains services: gas, electricity, water and drainage.



Road Map



Hybrid Map

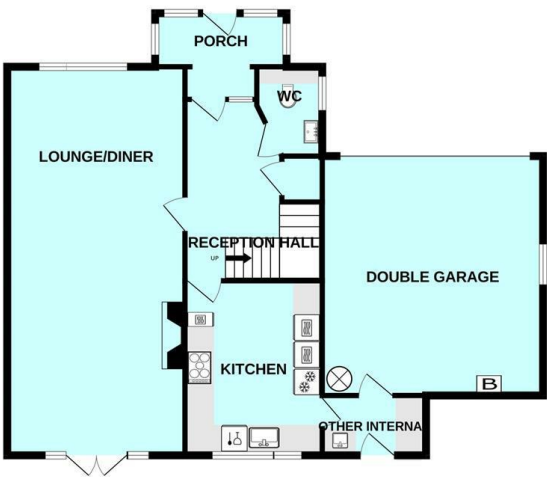


Terrain Map

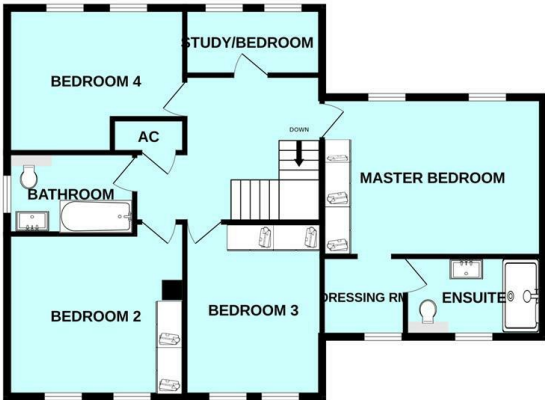


Floor Plan

GROUND FLOOR



1ST FLOOR

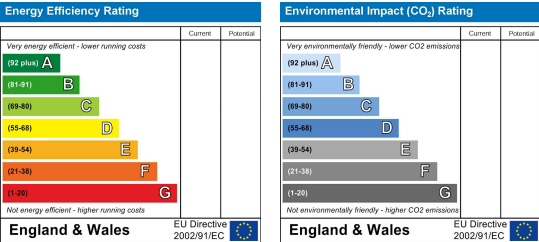


Made with Metropix ©2025

Viewing

Please contact our Plymouth Office on 01752 664125 if you wish to arrange a viewing appointment for this property or require further information.

Energy Efficiency Graph



These particulars, whilst believed to be accurate are set out as a general outline only for guidance and do not constitute any part of an offer or contract. Intending purchasers should not rely on them as statements of representation of fact, but must satisfy themselves by inspection or otherwise as to their accuracy. No person in this firms employment has the authority to make or give any representation or warranty in respect of the property.