



124 Church Hill

Eggbuckland, Plymouth, PL6 5RB

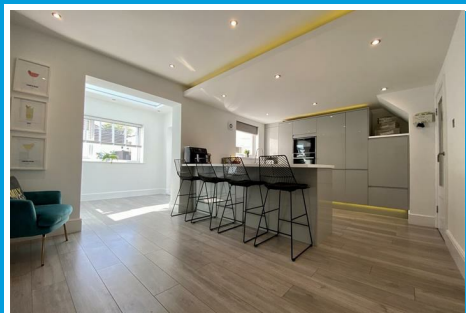
Offers Over £375,000



124 Church Hill

Eggbuckland, Plymouth, PL6 5RB

Offers Over £375,000



CHURCH HILL, EGGBUCKLAND, PLYMOUTH, PL6 5RB

ACCOMMODATION

Entrance via a composite front door with obscured glazed panels on either side that opens up into the entrance hall.

ENTRANCE HALL

10'4" x 5'10" (3.17 x 1.8)

Staircase rising to the first floor landing with LED lighting & under-stairs storage cupboard. Herringbone style LVT flooring. Ceiling spotlights. Wooden door with glazed panels opens up into the kitchen/family room.

KITCHEN/FAMILY ROOM

18'8" x 11'10" (5.69 x 3.61)

Attractive matching base & wall mounted grey high gloss units. Integrated Neff microwave & Neff slide & hide oven. Integrated dishwasher & fridge/freezer. Roll edge work surface has inset Neff induction hob. Inset sink unit with as mixer tap. Grey wood effect laminate flooring. Ceiling spotlights incorporating a breakfast bar. Wall mounted Ideal Logic boiler concealed in unit. uPVC double-glazed window to the rear. Contemporary upright radiator. Wooden doors with glazed panels opens up into the lounge. Archway which opens up into the dining room.

LOUNGE

14'0" x 12'4" max (4.28 x 3.77 max)

uPVC double-glazed bay window to the front overlooking the front garden with distant views towards Plymouth. A media wall & electric fan fire inset into the chimney breast. Floating shelving to one side.

DINING ROOM

9'7" x 7'4" (2.94 x 2.26)

Grey wood effect laminate flooring. uPVC double-glazed

window to the rear & uPVC double-glazed French doors open up out to the garden. Ample space for a dining table.

FIRST FLOOR LANDING

12'2" x 6'10" (3.71 x 2.1)

uPVC double-glazed window to the side. Ceiling spotlights. Doors leading off through to bedrooms, study/nursery & family bathroom. A further staircase leading up to the second floor landing with LED lighting.

BEDROOM TWO

13'11" x 10'9" (4.26 x 3.29)

Fitted wardrobes running along one wall with hanging rail & shelving. uPVC double-glazed bay window to the front with views towards Plymouth.

BEDROOM THREE

11'10" x 11'4" (3.61 x 3.47)

uPVC double-glazed window to the rear overlooking the garden. Ceiling spotlights. Media wall.

STUDY/NURSERY

5'11" x 5'6" (1.81 x 1.69)

uPVC double-glazed window to the front with distant views towards Plymouth.

BATHROOM

6'9" x 5'6" (2.07 x 1.69)

Attractive matching suite of panelled bath with central taps, fitted shower over with both rainfall & handheld shower-heads. Ceiling spotlights. Pedestal wash hand basin. Close coupled wc. Contemporary upright radiator. Tiled floor. Tiled walls. uPVC double-glazed window to the rear. Extractor fan.

SECOND FLOOR LANDING

A door opening up into the master bedroom.

MASTER BEDROOM

17'5" narrowing to 8'3" x 13'2" narrowing to 9'3" (5.31 narrowing to 2.54 x 4.02 narrowing to 2.83)

Building Regs sign off due to be completed. A dual aspect room with uPVC double-glazed window to the rear overlooking the garden. 2 velux window to the front. Storage cupboards into the eaves. Ceiling spotlights. Contemporary upright radiator. Door into the en-suite.

EN-SUITE

6'2" x 5'6" (1.88 x 1.68)

Matching suite of walk-in shower cubical with dual shower-heads both rainfall & handheld. Close coupled wc. Wash hand basin inset into vanity storage cupboards below. Part-tiled walls. Heated towel rail. Extractor fan. Ceiling spotlights. Obscured uPVC double-glazed window to the rear.

OUTSIDE

The property is approached via a paved path with steps leading up to the front door. Driveway to one side to the fore of a wooden gate which gives access to the rear garden.

GARDEN

The garden has been landscaped by the current owners to create a fantastic space to entertain family & friends in with porcelain tiles. The main section of rear garden has a

porcelain path leads up to wards the rear garden which is bordered on one side by a section of lawn towards a large paved patio area with all porcelain tiles which provides a nice vantage point over the garden. Outdoor lighting.

GAMES ROOM

19'1" x 9'6" (5.82 x 2.92)

The garage has been converted into a games room. uPVC double-glazed window to the side. uPVC double-glazed roof window. Ceiling spotlights. Wood cladding to one wall. Wall mounted electric heater.

COUNCIL TAX

Plymouth City Council
Council Tax Band: C

SERVICES

The property is connected to all the mains services: gas, electricity, water and drainage.



Road Map



Hybrid Map



Terrain Map

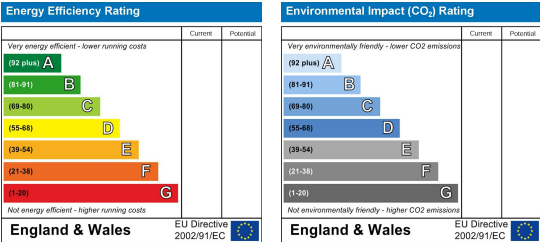


Floor Plan

Viewing

Please contact our Plymouth Office on 01752 664125 if you wish to arrange a viewing appointment for this property or require further information.

Energy Efficiency Graph



These particulars, whilst believed to be accurate are set out as a general outline only for guidance and do not constitute any part of an offer or contract. Intending purchasers should not rely on them as statements of representation of fact, but must satisfy themselves by inspection or otherwise as to their accuracy. No person in this firms employment has the authority to make or give any representation or warranty in respect of the property.