



54 Seymour Road

Mannamead, Plymouth, PL3 5AX

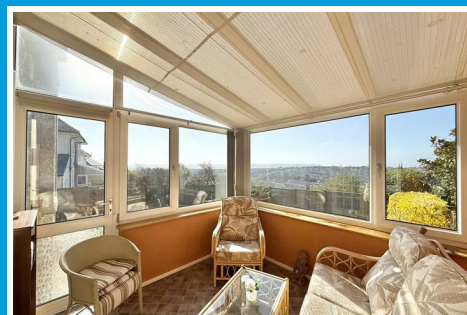
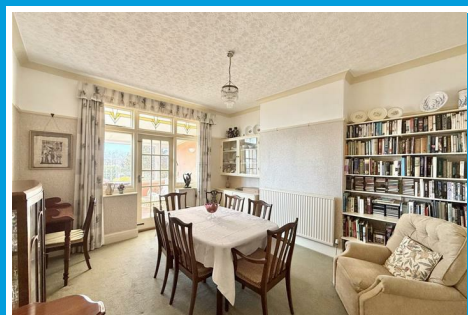
Guide Price £500,000



54 Seymour Road

Mannamead, Plymouth, PL3 5AX

Guide Price £500,000



SEYMOUR ROAD, MANNAMEAD, PLYMOUTH, PL3 5AX

GUIDE PRICE £500,000 - £525,000

LOCATION

Found on the southerly side of Seymour Road with a southerly facing rear garden. Set in this highly popular, sought after, residential district of Mannamead. A good variety of local services & amenities nearby. The position is convenient for easy access into the city & close by connection to major routes in other directions.

ACCOMMODATION

An entrance lobby with period stained glass detailing gives access to the generous-sized reception hall with staircase rising to the first floor. Downstairs cloakroom/wc. A generous-sized front set lounge, feature fireplace, wide double sliding doors to the good-sized dining room, storage cupboard & leading into the conservatory set overlooking the rear garden. A spacious separate breakfast room leads into the fitted kitchen with wide double bowl sink & Siemens induction hob, Siemens double oven/grill. From here into the side set rear porch which also services as a utility room with space & plumbing for a washing machine.

Staircase rises & turns to the generous-sized landing. Ample room to access the large loft. Master bedroom with a run of built-in wardrobe with cupboard storage to one side & a vanity wash hand basin. The second bedroom also with built-in wardrobes, storage & a vanity wash hand basin. The third bedroom housing the airing cupboard with hot water tank. The fourth bedroom set to the front. A modern fitted shower room with shower, wc

& wash hand basin.

Externally a wide entrance opens into the 31ft long wide herringbone pattern brick paved drive, providing off-street parking for various vehicles. Giving access to the generous-sized integral garage which houses the high quality Viessmann gas fired boiler which services the central heating & domestic hot water. A 21ft wide side area including patio & this space providing potential to extend the house, create more parking or to build a larger garage, subject to any necessary approval.

At the rear a southerly facing enclosed lawned rear garden with patio & access to an outside wc & small stores located under the kitchen & conservatory.

The property has only had 2 owners since it was built in 1936. There is no onward chain.

GROUND FLOOR

ENTRANCE LOBBY

7 x 3'3 (2.13m x 0.99m)

RECEPTION HALL

14'10 x 7 overall (4.52m x 2.13m overall)

WC

5'1 x 2'7 (1.55m x 0.79m)

LOUNGE

15'9 x 14'8 max (4.80m x 4.47m max)

DINING ROOM

13'11 x 12'3 (4.24m x 3.73m)

CONSERVATORY

9'7 x 9 (2.92m x 2.74m)

BREAKFAST ROOM

10'5 x 9'3 (3.18m x 2.82m)

KITCHEN

11'1 x 9'3 (3.38m x 2.82m)

REAR PORCH/UTILITY

7'2 x 3 (2.18m x 0.91m)

FIRST FLOOR LANDING

13 x 9'5 (3.96m x 2.87m)

BEDROOM ONE

15'9 x 12'4 max (4.80m x 3.76m max)

BEDROOM TWO

14'1 x 11'3 floor area (4.29m x 3.43m floor area)

BEDROOM THREE

11'1 x 9'3 (3.38m x 2.82m)

BEDROOM FOUR

9'4 x 8'6 (2.84m x 2.59m)

SHOWER ROOM

9'4 x 6'8 (2.84m x 2.03m)

EXTERNALLY

GARAGE

16'4 x 9'2 (4.98m x 2.79m)

DRIVE

STORES

GARDENS TO FRONT, SIDE & REAR

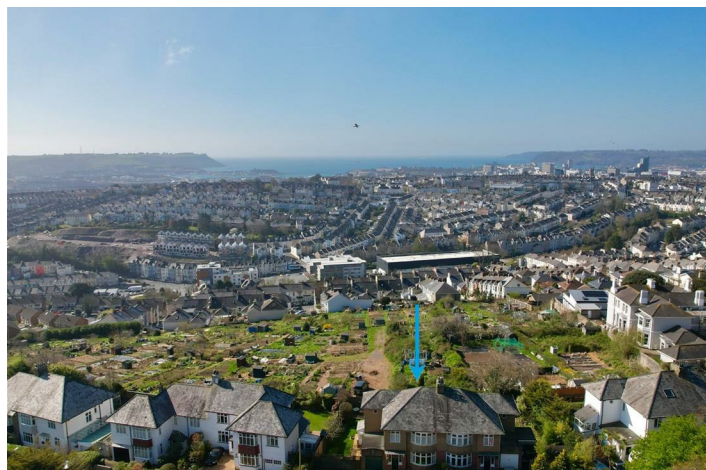
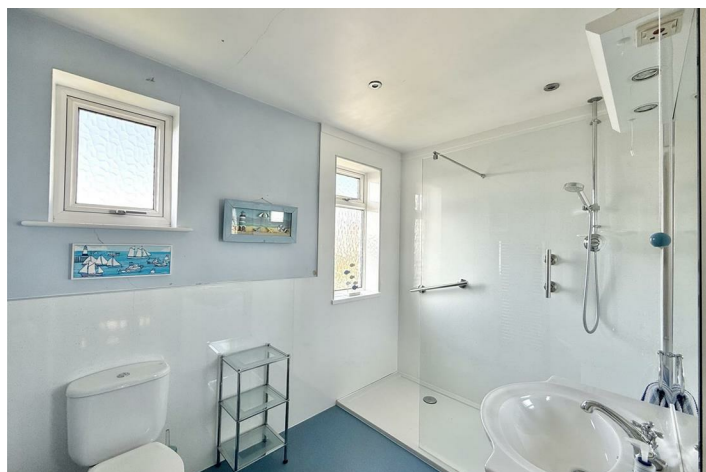
COUNCIL TAX

Plymouth City Council

Council Tax Band: D

SERVICES

The property is connected to all the mains services: gas, electricity, water and drainage.



Road Map



Hybrid Map



Terrain Map



Floor Plan

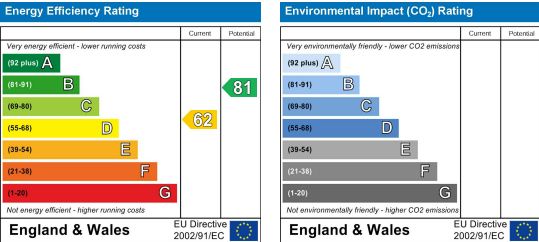


Made with Metropix ©2025

Viewing

Please contact our Plymouth Office on 01752 664125 if you wish to arrange a viewing appointment for this property or require further information.

Energy Efficiency Graph



These particulars, whilst believed to be accurate are set out as a general outline only for guidance and do not constitute any part of an offer or contract. Intending purchasers should not rely on them as statements of representation of fact, but must satisfy themselves by inspection or otherwise as to their accuracy. No person in this firm's employment has the authority to make or give any representation or warranty in respect of the property.