



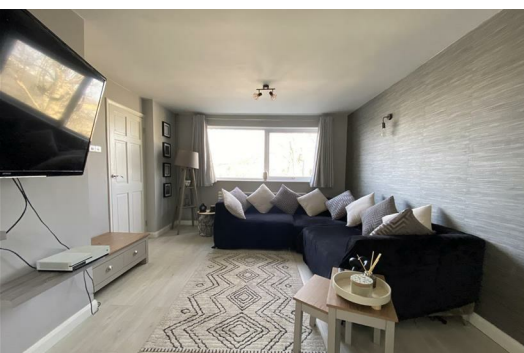
114 Deer Park Drive

Deer Park, Plymouth, PL3 6ST

£230,000



An extremely well presented mid-terraced house built in the late 1970s. Double-glazing & gas central heating with modern boiler. Generously sized accommodation having porch, hall with useful storage cupboards & downstairs cloakroom/wc off. Spacious open-plan lounge/dining room with far reaching views & connected to the modern fitted integrated kitchen. 3 good-sized bedrooms & a well appointed modern fitted bathroom/wc. A front garden & to the rear a delightful long southerly facing landscaped back garden. No onward chain.



DEER PARK DRIVE, DEER PARK, PLYMOUTH, PL3 6ST

ACCOMMODATION

Entrance via a uPVC obscured double-glazed door which opens up into the vestibule.

VESTIBULE/UTILITY 7'8" x 3'6" (2.35 x 1.08)

Tiled floor. Space for a tumble dryer with roll edge laminate work surface over. uPVC double-glazed window to the front. uPVC double-glazed door opens up into the entrance hall.

ENTRANCE HALL 10'1" x 5'2" (3.09 x 1.59)

Grey wood effect laminate flooring. Staircase rising to the first floor landing. Doors leading off through to the lounge & cloakroom. Archway opening up into the kitchen.

CLOAKROOM 5'9" x 2'10" (1.77 x 0.87)

Matching suite of close coupled wc. Wash hand basin. Part-tiled walls.

LOUNGE DINER 20'10" x 11'10" (6.36 x 3.61)

Grey wood effect laminate flooring. uPVC double-glazed window to the front with views over Plymouth. Ample space for a dining table & sofas. uPVC double-glazed french doors opening up out to the rear garden. Square arch opening up into the kitchen.

KITCHEN 10'7" x 6'11" (3.25 x 2.13)

Attractive base & wall mounted units to include: fitted oven & space for an upright fridge/freezer, integrated dishwasher, square edge work surface has inset sink unit with a mixer tap & a four ring induction hob with a stainless steel hood over. Brick-style tiled splash-back. uPVC double-glazed window to the rear. Grey wood effect laminate flooring. Ceiling spotlights. Door into 2 storage cupboards, one of which has the plumbing for a washing machine & houses the gas & electric meters.

FIRST FLOOR LANDING 7'2" x 2'8" (2.2 x 0.82)

Doors leading off through to the bedrooms, bathroom & also the airing cupboard which houses the Worcester combination boiler.

BEDROOM ONE 12'0" 11'2" (3.66 3.42)

Detailed panelling to one wall. uPVC double-glazed window to the rear overlooking the garden.

BEDROOM TWO 12'0" x 9'5" (3.66 x 2.88)

uPVC double-glazed window to the front with distant views over Plymouth.

BEDROOM THREE 8'8" x 7'2" (2.66 x 2.2)

uPVC double-glazed window to the rear overlooking the garden.

BATHROOM 8'7" x 6'0" (2.64 x 1.84)

Matching suite of L-shaped bath with a fitted shower over, dual shower heads both rainfall & handheld. Close coupled wc. Wall mounted wash hand basin. Tiled walls & floor. Heated towel rail. Obscured uPVC double-glazed window to the front. Ceiling spotlights.

OUTSIDE

The property is approached via a couple of steps which lead up to the front door & this is bordered by two areas by paving slabs & also stone chippings.

GARDEN

To the rear we have an enclosed garden which consists of a paved patio seating area, a section of artificial grass & some steps leading up one side to the 2nd terrace. The terrace has paving to the fore, main section of lawn & further garden area to the rear.

COUNCIL TAX

Plymouth City Council
Council Tax Band: B

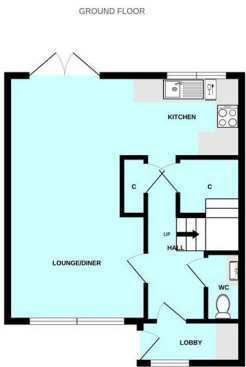
SERVICES

The property is connected to all the mains services: gas, electricity, water and drainage.

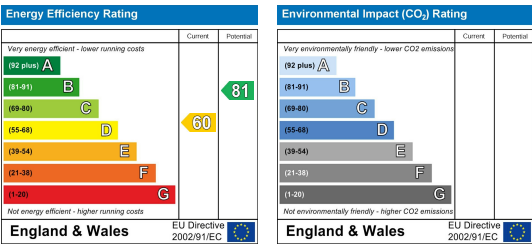
Area Map



Floor Plans



Energy Efficiency Graph



These particulars, whilst believed to be accurate are set out as a general outline only for guidance and do not constitute any part of an offer or contract. Intending purchasers should not rely on them as statements of representation of fact, but must satisfy themselves by inspection or otherwise as to their accuracy. No person in this firms employment has the authority to make or give any representation or warranty in respect of the property.