

SHARED OWNERSHIP AT
HEPWORTH PLACE
WALTHAMSTOW

BLOCK B
FLOORPLANS

One Housing  Part of
Riverside

SITE MAP

SHARED OWNERSHIP AT HEPWORTH PLACE

- ① Block B
- ② Block C
- ③ Block D
- ④ Block H

CIVIC SPACES AT HEPWORTH PLACE

- ⑤ Waltham Forest Town Hall
- ⑥ Assembly Hall
- ⑦ Fellowship Square
- ⑧ Civic Centre

SURROUNDING AREA, GROUNDS AND ROADS

- ⑨ Hepworth Place Grounds
- ⑩ Chestnuts Field
- ⑪ A503 Forest Road
- ⑫ Faman Avenue

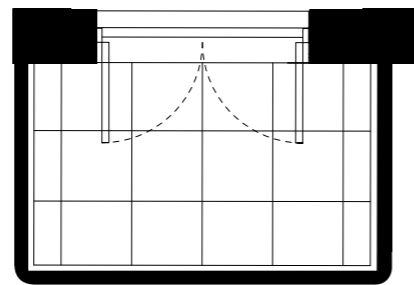


ONE BEDROOM

PLOTS: 400 GROUND, 406* FIRST, 414*SECOND AND 422 THIRD*



*Balcony area for plots 406, 414 and 422

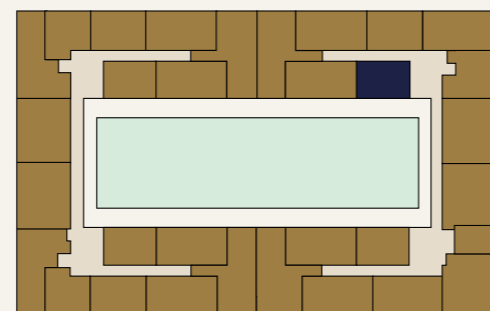


◀ NORTH

U Utility Cupboard | W Wardrobe

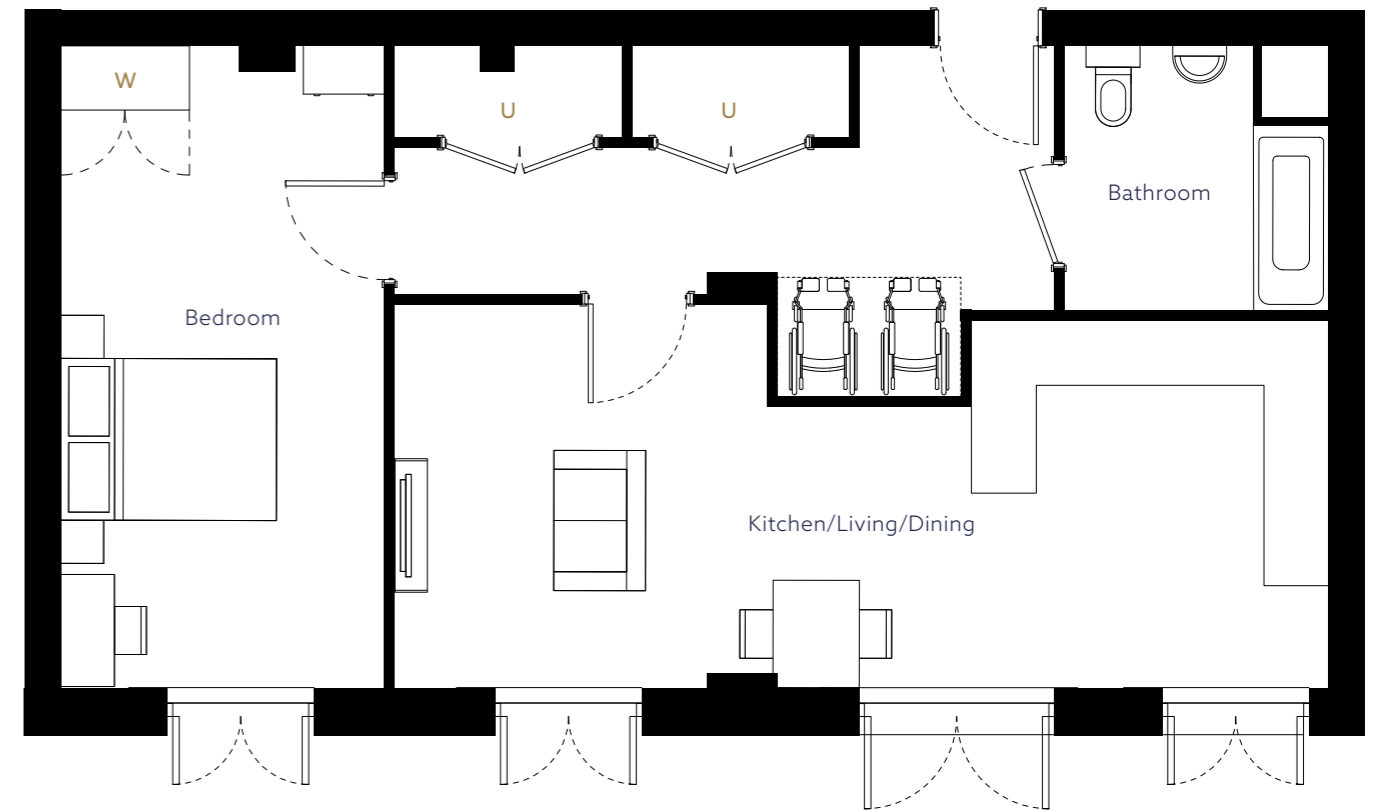
ROOM	METRIC	IMPERIAL
Kitchen/Living/Dining	4.95 x 5.95	16' 2" x 19' 6"
Bedroom	3.35 x 3.70	10' 11" x 12' 1"
Bathroom	2.00 x 2.15	6' 6" x 7' 0"
TOTAL	50m²	538ft²

◀ NORTH PLOT LOCATOR



ONE BEDROOM

PLOT: 401 UPPER GROUND

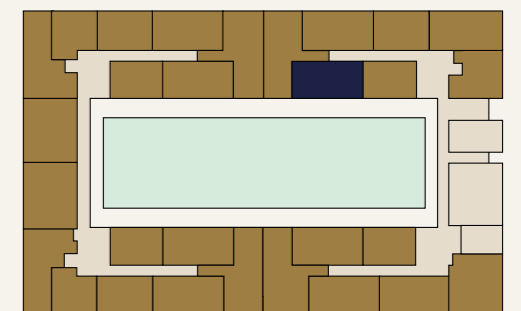


◀ NORTH

U Utility Cupboard | W Wardrobe

ROOM	METRIC	IMPERIAL
Kitchen/Living/Dining	8.66 x 3.50	28' 4" x 11' 5"
Bedroom 1	3.00 x 5.00	9' 10" x 16' 4"
Bathroom	2.45 x 2.45	8' 0" x 8' 0"
TOTAL	70m²	753ft²

◀ NORTH PLOT LOCATOR



*Plots have a balcony from the kitchen/living/ding area. Floor plans are not to scale and are indicative only. Location of windows, doors, bathroom fittings, kitchen units and appliances may differ. Dimensions given are approximate and should not be used to order carpets or furniture. External area sizes and locations may differ from those illustrated.

Floor plans are not to scale and are indicative only. Location of windows, doors, bathroom fittings, kitchen units and appliances may differ. Dimensions given are approximate and should not be used to order carpets or furniture. External area sizes and locations may differ from those illustrated.

ONE BEDROOM

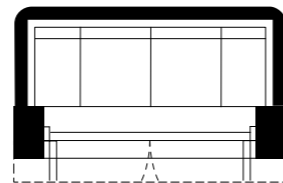
PLOTS: 404 UPPER GROUND, 410* FIRST, 418* SECOND AND 426* THIRD



▲ NORTH

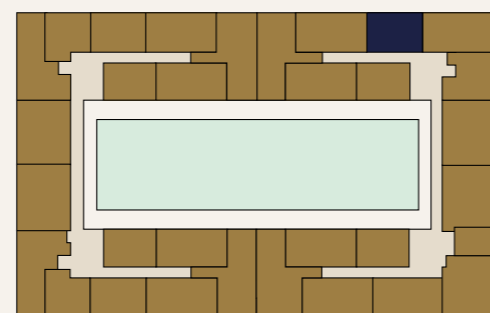
U Utility Cupboard | W Wardrobe

*Balcony area
 for plots 410,
 418 and 426



ROOM	METRIC	IMPERIAL
Kitchen/Living/Dining	5.67 x 6.07	18' 7" x 19' 10"
Bedroom	3.36 x 3.80	11' 0" x 12' 5"
Bathroom	2.15 x 2.00	7' 0" x 6' 6"
TOTAL	55m²	538ft²

▲ NORTH PLOT LOCATOR



ONE BEDROOM

PLOTS: 412 FIRST, 420 SECOND AND 428 THIRD

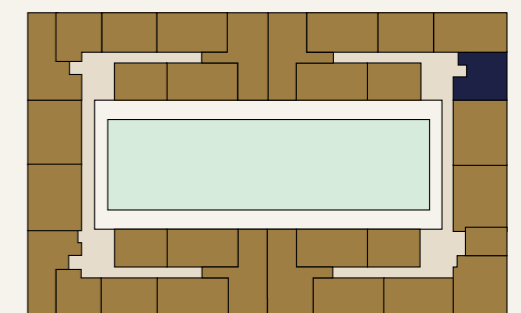


▲ NORTH

U Utility Cupboard | W Wardrobe

ROOM	METRIC	IMPERIAL
Kitchen/Living/Dining	8.53 x 4.43	27' 11" x 14' 6"
Bedroom	4.25 x 3.35	13' 11" x 10' 11"
Bathroom	2.29 x 1.98	7' 5" x 6' 5"
TOTAL	59m²	635ft²

▲ NORTH PLOT LOCATOR



*Plots have a balcony from the kitchen/living/ding area. Floor plans are not to scale and are indicative only. Location of windows, doors, bathroom fittings, kitchen units and appliances may differ. Dimensions given are approximate and should not be used to order carpets or furniture. External area sizes and locations may differ from those illustrated.

Floor plans are not to scale and are indicative only. Location of windows, doors, bathroom fittings, kitchen units and appliances may differ. Dimensions given are approximate and should not be used to order carpets or furniture. External area sizes and locations may differ from those illustrated.

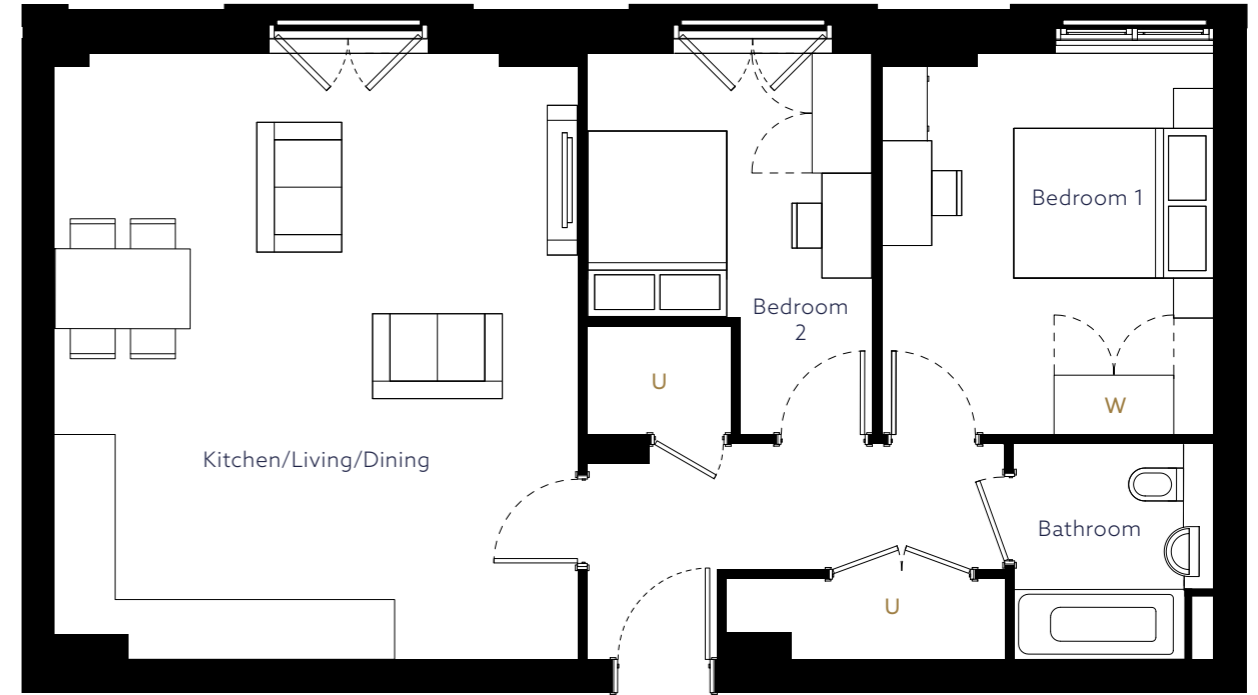
TWO BEDROOM
 PLOT: 402 UPPER GROUND



▲ NORTH

U Utility Cupboard | W Wardrobe

TWO BEDROOM
 PLOTS: 403 UPPER GROUND, 409* FIRST, 417* SECOND AND 425 THIRD*



▲ NORTH

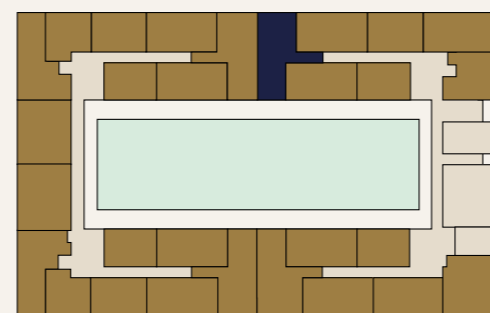
U Utility Cupboard | W Wardrobe

*Balcony area
 for plots 409,
 417 and 425



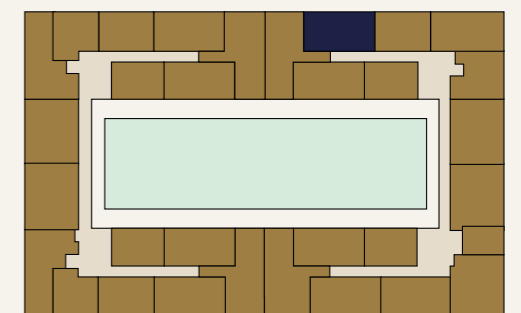
ROOM	METRIC	IMPERIAL
Kitchen/Living/Dining	5.88 x 4.59	19' 3" x 15' 0"
Bedroom 1	3.90 x 3.80	12' 9" x 12' 5"
Bedroom 2	5.20 x 2.46	17' 0" x 8' 0"
Bathroom	2.60 x 2.20	8' 6" x 7' 2"
Ensuite	1.50 x 2.20	4' 11" x 7' 2"
TOTAL	86m²	925ft²

▲ NORTH PLOT LOCATOR



ROOM	METRIC	IMPERIAL
Kitchen/Living/Dining	5.23 x 6.07	17' 1" x 19' 10"
Bedroom 1	3.32 x 3.82	10' 10" x 12' 6"
Bedroom 2	2.85 x 3.82	9' 4" x 12' 6"
Bathroom	2.15 x 2.00	7' 0" x 6' 6"
TOTAL	70m²	753ft²

▲ NORTH PLOT LOCATOR

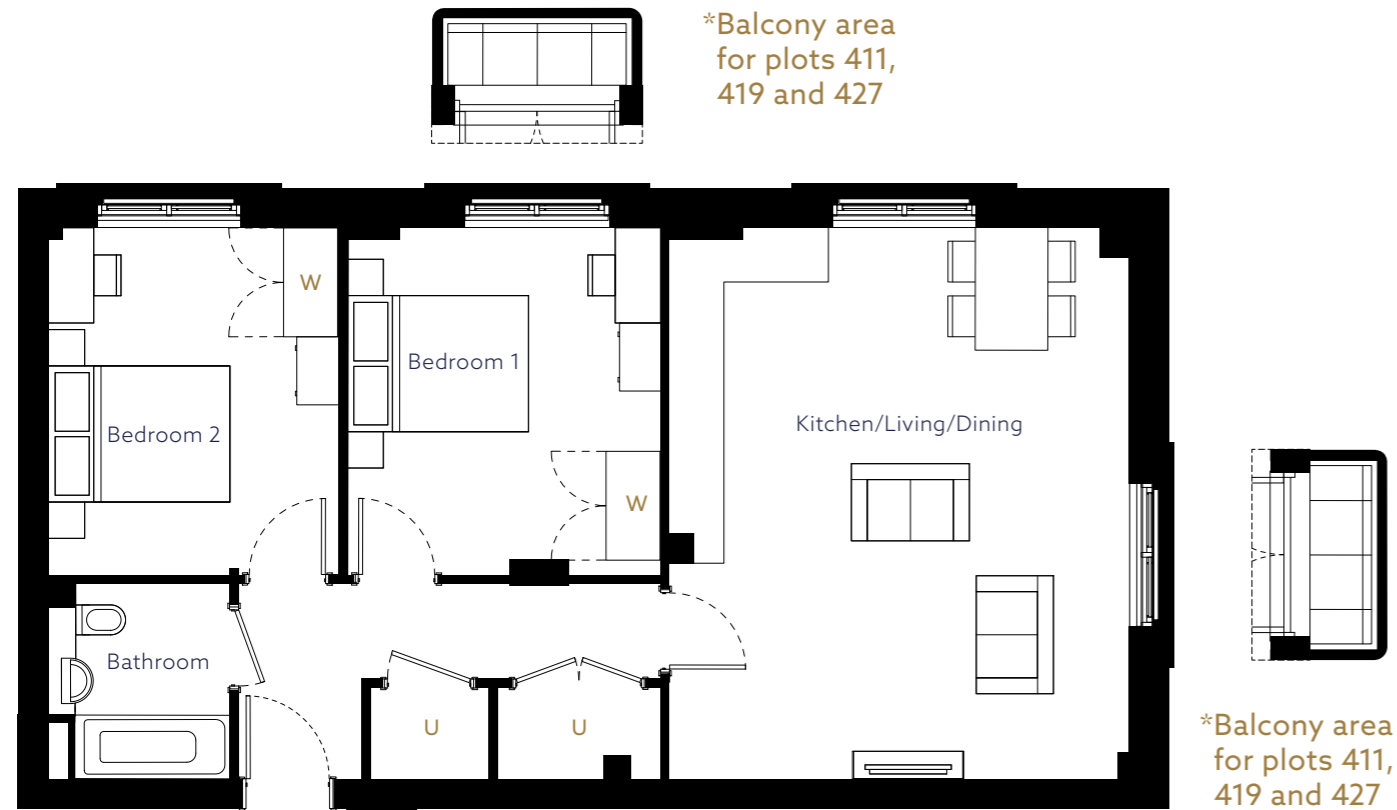


Floor plans are not to scale and are indicative only. Location of windows, doors, bathroom fittings, kitchen units and appliances may differ. Dimensions given are approximate and should not be used to order carpets or furniture. External area sizes and locations may differ from those illustrated.

*Plots have a balcony from the kitchen/living/ding area. Floor plans are not to scale and are indicative only. Location of windows, doors, bathroom fittings, kitchen units and appliances may differ. Dimensions given are approximate and should not be used to order carpets or furniture. External area sizes and locations may differ from those illustrated.

TWO BEDROOM

PLOTS: 405 UPPER GROUND, 411* FIRST, 419* SECOND AND 427 THIRD*

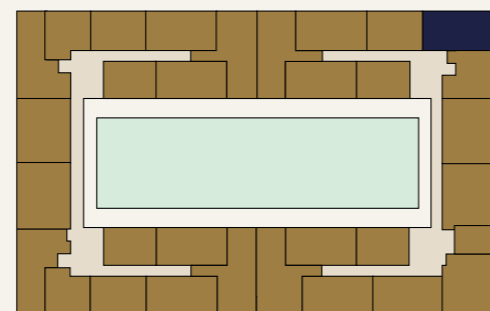


◀ NORTH

U Utility Cupboard | W Wardrobe

ROOM	METRIC	IMPERIAL
Kitchen/Living/Dining	5.07 x 6.07	16' 7" x 19' 11"
Bedroom 1	3.46 x 3.92	11' 4" x 12' 10"
Bedroom 2	3.29 x 3.92	10' 9" x 12' 10"
Bathroom	2.00 x 2.15	6' 6" x 7' 0"
TOTAL	72m²	775ft²

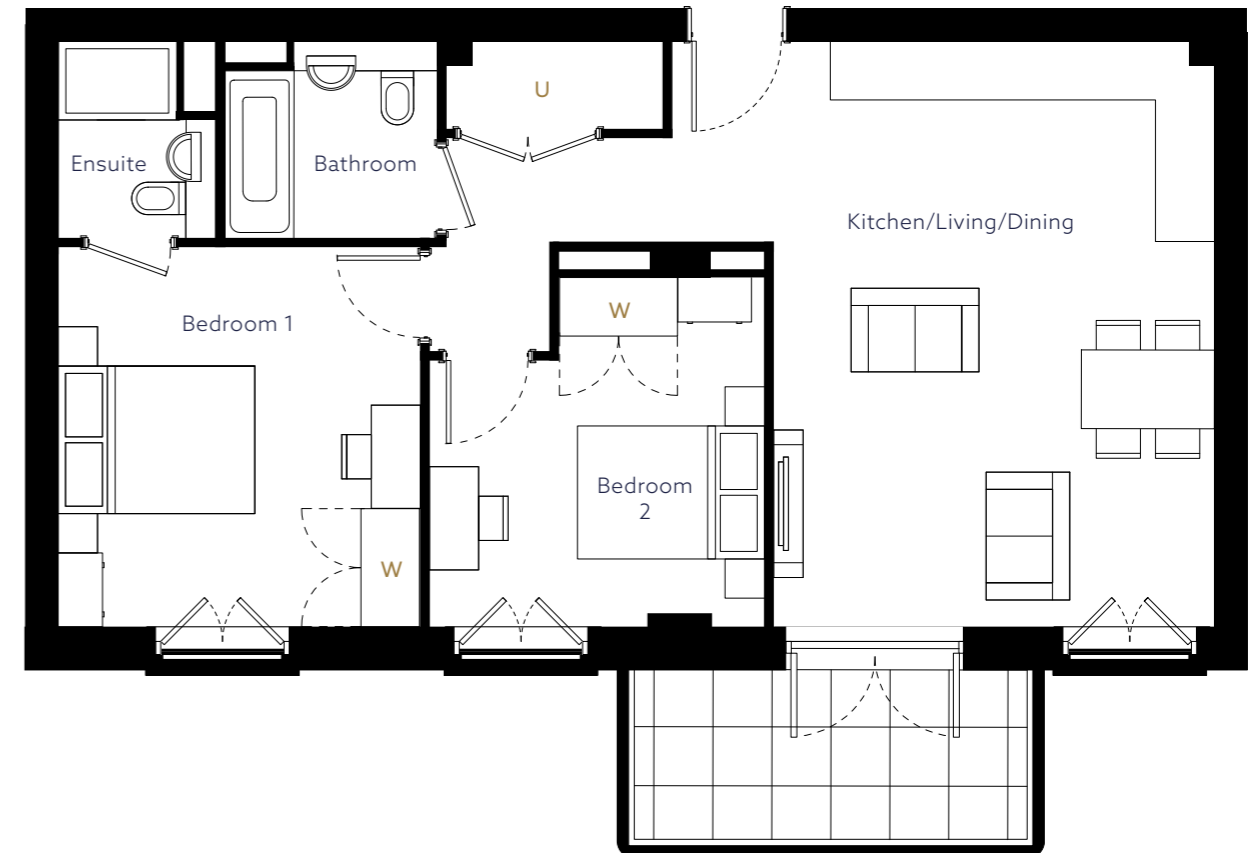
◀ NORTH PLOT LOCATOR



*Plots have a balcony from the kitchen/living/ding area. Floor plans are not to scale and are indicative only. Location of windows, doors, bathroom fittings, kitchen units and appliances may differ. Dimensions given are approximate and should not be used to order carpets or furniture. External area sizes and locations may differ from those illustrated.

TWO BEDROOM

PLOTS: 407 FIRST, 415 SECOND AND 423 THIRD

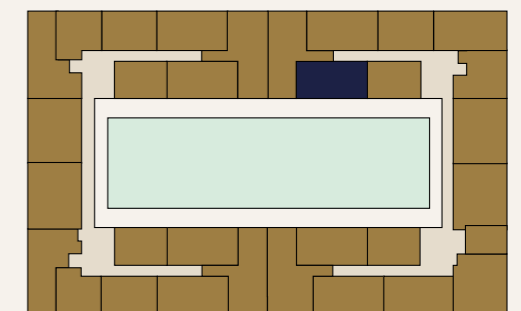


◀ NORTH

U Utility Cupboard | W Wardrobe

ROOM	METRIC	IMPERIAL
Kitchen/Living/Dining	5.51 x 5.95	18' 0" x 19' 6"
Bedroom 1	3.32 x 3.85	10' 10" x 12' 7"
Bedroom 2	2.85 x 3.85	9' 4" x 12' 7"
Bathroom	2.08 x 2.00	6' 9" x 6' 6"
Ensuite	1.60 x 2.00	5' 2" x 6' 6"
TOTAL	70m²	753ft²

◀ NORTH PLOT LOCATOR



Floor plans are not to scale and are indicative only. Location of windows, doors, bathroom fittings, kitchen units and appliances may differ. Dimensions given are approximate and should not be used to order carpets or furniture. External area sizes and locations may differ from those illustrated.

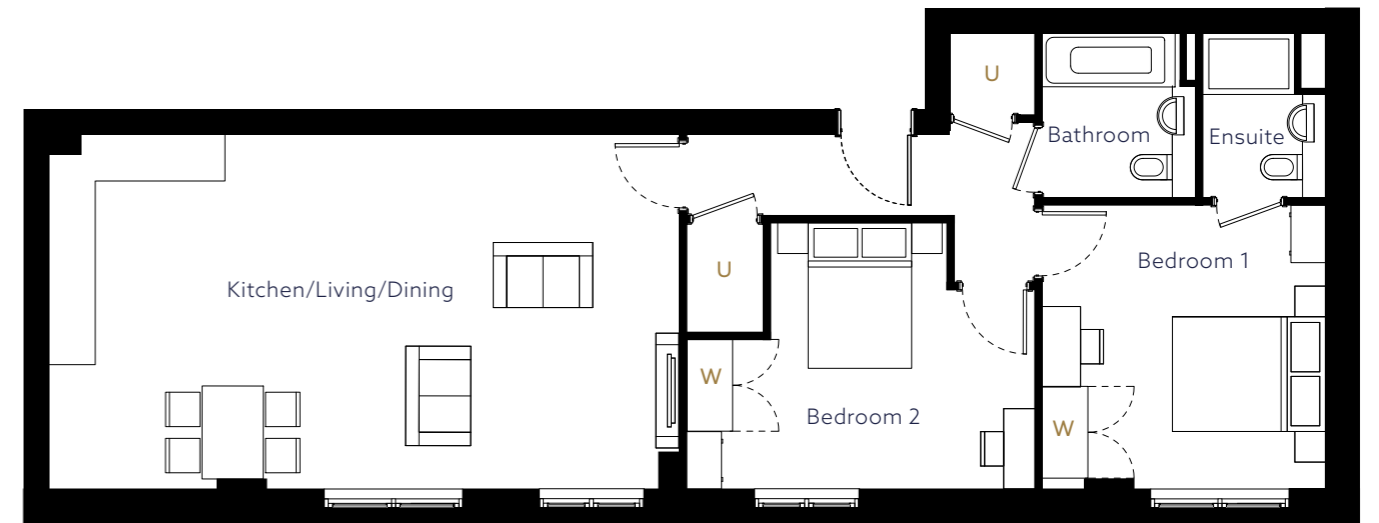
TWO BEDROOM
 PLOTS: 408 FIRST,
 416 SECOND
 AND 424 THIRD



▲ NORTH

U Utility Cupboard | W Wardrobe

TWO BEDROOM
 PLOT: 430 FOURTH

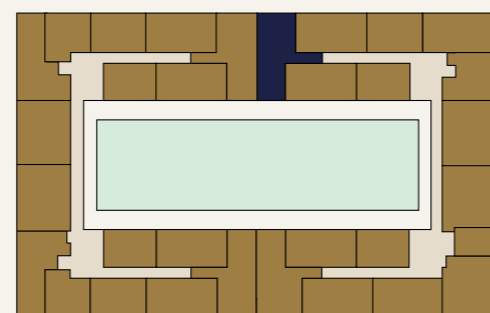


▲ NORTH

U Utility Cupboard | W Wardrobe

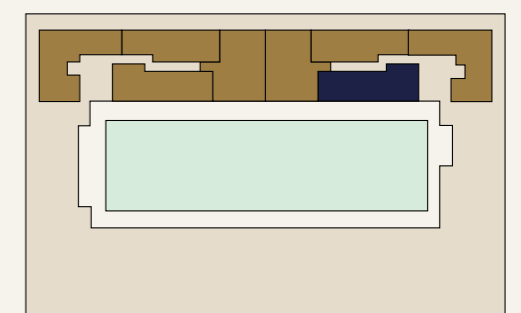
ROOM	METRIC	IMPERIAL
Kitchen/Living/Dining	6.18 x 4.58	20' 3" x 15' 0"
Bedroom 1	4.20 x 3.30	13' 9" x 10' 9"
Bedroom 2	5.20 x 2.96	17' 0" x 9' 8"
Bathroom	2.00 x 2.15	6' 6" x 7' 0"
Ensuite	1.60 x 2.00	5' 2" x 6' 6"
TOTAL	86m²	925ft²

▲ NORTH PLOT LOCATOR

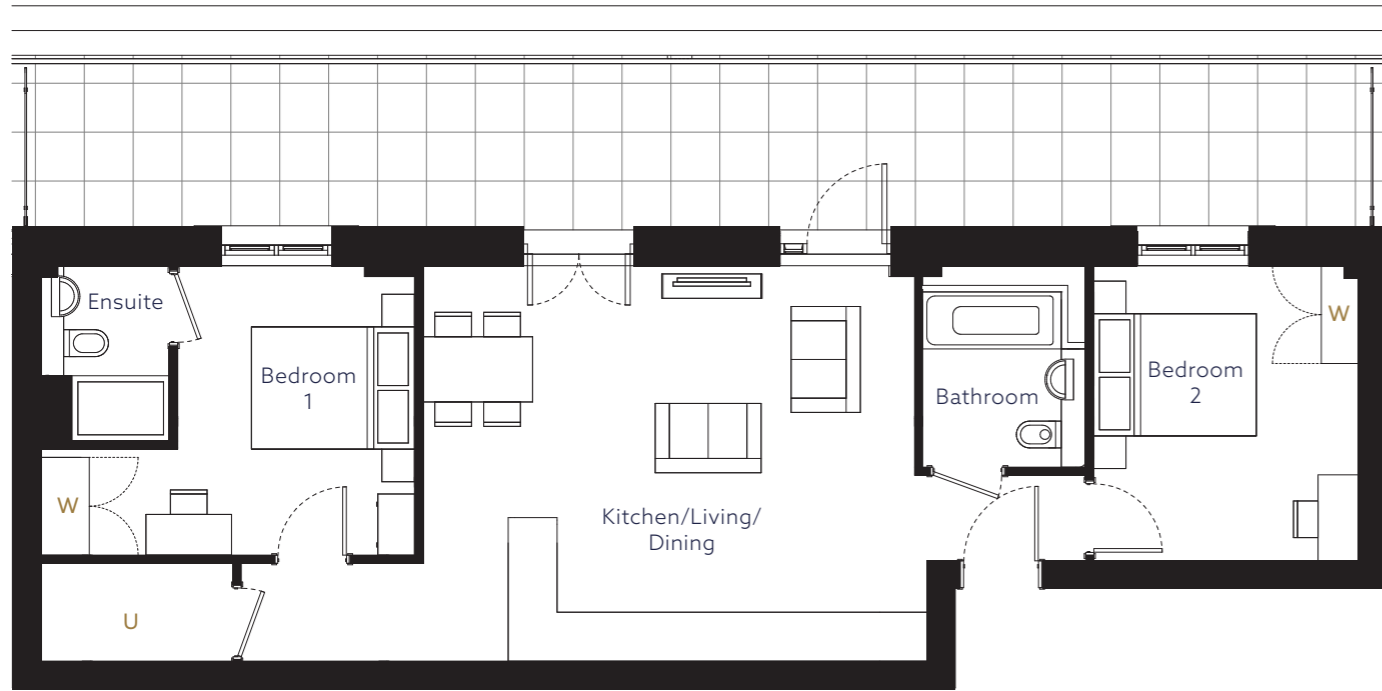


ROOM	METRIC	IMPERIAL
Kitchen/Living/Dining	8.23 x 4.62	27' 0" x 15' 2"
Bedroom 1	3.70 x 3.70	12' 1" x 12' 1"
Bedroom 2	4.65 x 3.50	15' 2" x 11' 5"
Bathroom	1.90 x 2.15	6' 2" x 7' 0"
Ensuite	1.60 x 2.15	5' 2" x 7' 0"
TOTAL	84m²	904ft²

▲ NORTH PLOT LOCATOR



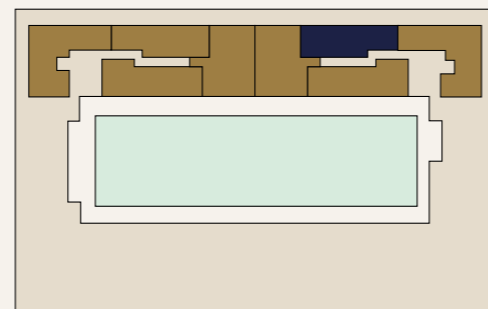
TWO BEDROOM
 PLOT: 432 FOURTH



U Utility Cupboard | W Wardrobe

ROOM	METRIC	IMPERIAL
Kitchen/Living/Dining	7.01 x 4.85	22' 11" x 15' 10"
Bedroom 1	3.64 x 3.75	11' 11" x 12' 3"
Bedroom 2	3.25 x 3.62	10' 7" x 11' 10"
Bathroom	2.00 x 2.15	6' 6" x 7' 0"
Ensuite	2.00 x 1.55	6' 6" x 5' 1"
TOTAL	72m²	775ft²

NORTH PLOT LOCATOR



Floor plans are not to scale and are indicative only. Location of windows, doors, bathroom fittings, kitchen units and appliances may differ. Dimensions given are approximate and should not be used to order carpets or furniture. External area sizes and locations may differ from those illustrated.

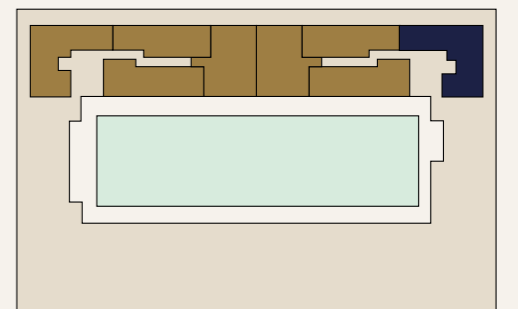
THREE BEDROOM
 PLOT: 433 FOURTH



U Utility Cupboard | W Wardrobe

ROOM	METRIC	IMPERIAL
Kitchen/Living/Dining	6.28 x 5.42	20' 7" x 17' 9"
Bedroom 1	4.25 x 3.62	13' 11" x 11' 10"
Bedroom 2	3.20 x 3.60	10' 5" x 11' 9"
Bedroom 3	3.61 x 2.47	11' 10" x 8' 1"
Bathroom	2.00 x 2.26	6' 6" x 7' 4"
Ensuite	2.15 x 1.60	7' 0" x 5' 2"
TOTAL	90m²	969ft²

NORTH PLOT LOCATOR



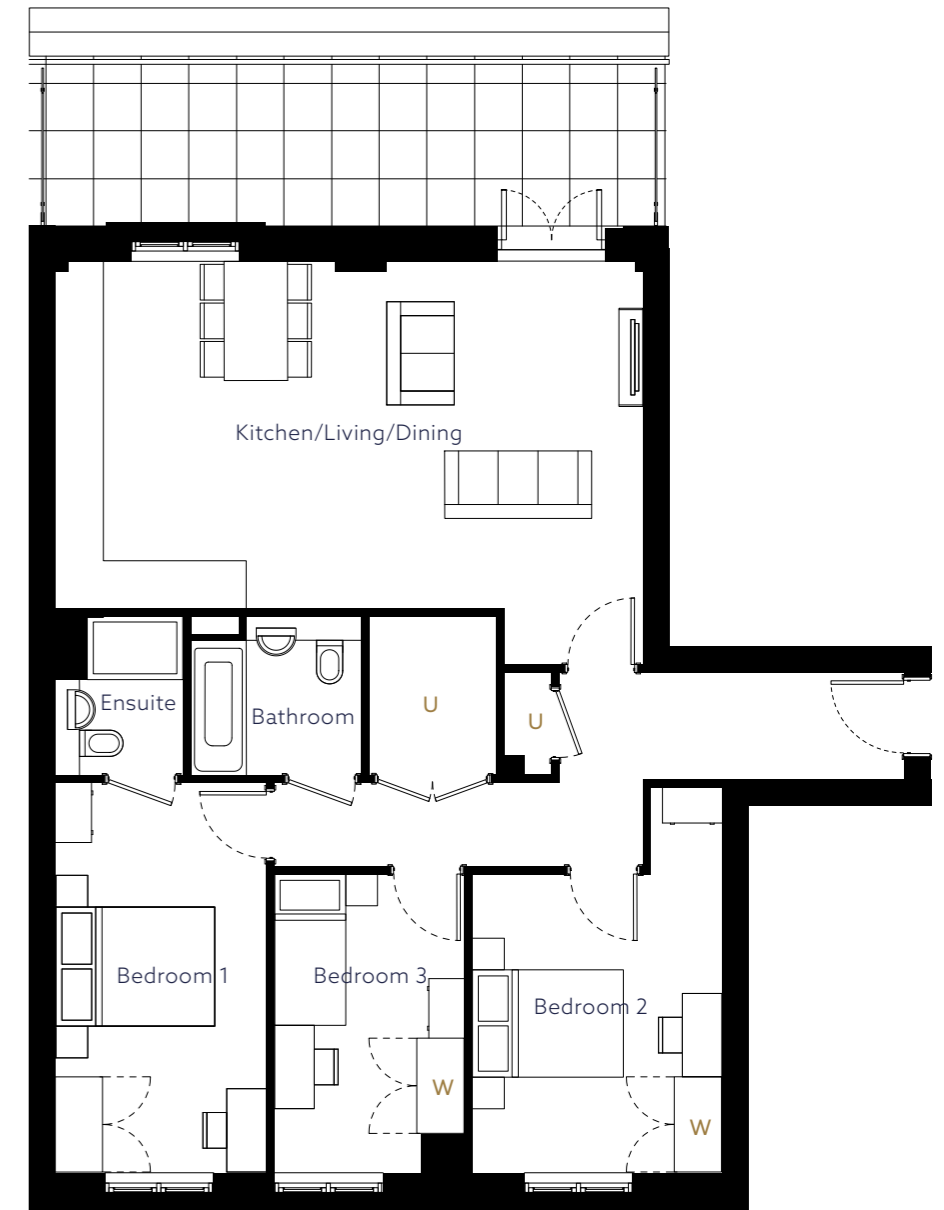
Floor plans are not to scale and are indicative only. Location of windows, doors, bathroom fittings, kitchen units and appliances may differ. Dimensions given are approximate and should not be used to order carpets or furniture. External area sizes and locations may differ from those illustrated.

THREE BEDROOM
 PLOTS: 413 FIRST, 421 SECOND AND THIRD 429



U Utility Cupboard | W Wardrobe

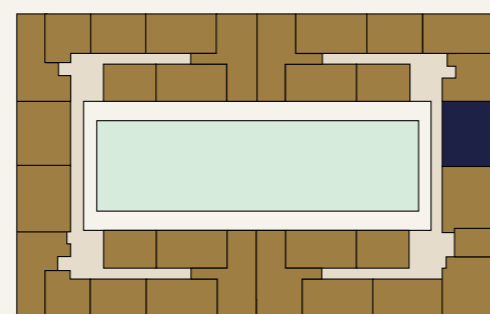
THREE BEDROOM
 PLOT: 431 FOURTH



U Utility Cupboard | W Wardrobe

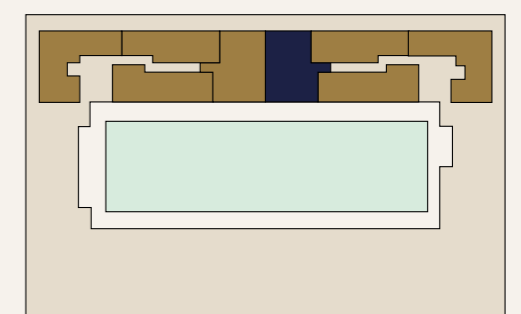
ROOM	METRIC	IMPERIAL
Kitchen/Living/Dining	8.22 x 4.31	26' 11" x 14' 1"
Bedroom 1	3.54 x 3.52	11' 7" x 11' 6"
Bedroom 2	3.35 x 3.56	10' 11" x 11' 8"
Bedroom 3	3.54 x 2.60	11' 7" x 8' 6"
Bathroom	2.15 x 2.15	7' 0" x 7' 0"
Ensuite	1.50 x 2.15	4' 11" x 7' 0"
TOTAL	89m²	957ft²

NORTH PLOT LOCATOR



ROOM	METRIC	IMPERIAL
Kitchen/Living/Dining	4.38 x 7.40	14' 4" x 24' 3"
Bedroom 1	4.91 x 2.76	16' 1" x 9' 0"
Bedroom 2	3.76 x 3.15	12' 4" x 10' 3"
Bedroom 3	3.76 x 2.40	12' 4" x 7' 10"
Bathroom	2.00 x 2.15	6' 6" x 7' 0"
Ensuite	2.00 x 1.60	6' 6" x 5' 2"
TOTAL	94m²	1,012ft²

NORTH PLOT LOCATOR



Floor plans are not to scale and are indicative only. Location of windows, doors, bathroom fittings, kitchen units and appliances may differ. Dimensions given are approximate and should not be used to order carpets or furniture. External area sizes and locations may differ from those illustrated.

Floor plans are not to scale and are indicative only. Location of windows, doors, bathroom fittings, kitchen units and appliances may differ. Dimensions given are approximate and should not be used to order carpets or furniture. External area sizes and locations may differ from those illustrated.

One Housing  Part of
Riverside