



14 Mill Road, Impington, Cambridge, CB24 9PE

Guide Price £875,000 Freehold



rah.co.uk
01223 819300

A HEAVILY EXTENDED AND SUBSTANTIAL SEMI-DETACHED HOME IN WONDERFUL DECORATIVE ORDER THROUGHOUT AND LOCATED WITHIN MILL ROAD, IMPINGTON, CAMBRIDGE.

- Property measures approximately 170SQM/1839SQFT.
- Mains Services include – Mains Gas, Mains Electricity, Mains Water & Mains Drainage
- EPC Rating – 73/C
- Heavily extended family home with five Double Bedrooms and Three Bathrooms.
- Generous rear garden.

Benefitting from five double bedrooms, this home has been extended heavily by the current owners and measures approximately 170SQM/1839SQFT.

To the ground floor the property comprises of an entrance hallway with stairs leading the first floor and access into the large open plan kitchen/dining area and the Living Room/Snug to the front. The large 'L' Shaped Kitchen/Dining area is the hub of the house and is ideal for entertaining. The Kitchen has a large island that provides seating for four people. Completing the remainder of the kitchen is a large range of cupboard space, integrated appliances including two eye level ovens, a Quooker hot tap and a large set of sliding patio doors which opens on to the landscaped garden to the rear. Complimenting the spacious Kitchen/Diner are two reception rooms which include the Living Room/Snug to the front and a large open plan sitting room with French doors leading into the rear garden. The ground floor benefits further from a utility room and a separate WC.

To the first floor is a Landing area which provides access to four of the five double bedrooms and the family bathroom which serves three of these. All bedrooms benefit from fitted/built in storage and bedroom two has the added benefit of an en-suite shower room which is fully tiled and has a walk-in shower, low level WC and a wall mounted sink with a vanity unit below. The family bathroom has been recently replaced, is fully tiled and benefits from a 'P' shaped bath with shower above, low level WC and a wall mounted double basin with vanity unit below.

The second floor has been converted by the current owner and provides a large master bedroom suite spanning across the roof space and has an en-suite area with a claw foot, freestanding, roll top bath, a sink unit and low-level WC.

Externally – To the front of the property is a gravel laid driveway with a wall mounted EV Charging point and ample space for two vehicles. A block paved pathway leads to the side of the property and provides gated access to the rear garden. The rear garden of the property is predominantly laid to lawn with a block paving area accessible of both the living room and the kitchen/diner. It is fully enclosed by panelled fencing with raised flower beds along one side and two timber constructed storage sheds to the rear of the garden.

Agents note

The Worcester boiler with hive controls was fitted by British Gas approximately 18 months ago. There is an ADT 24/7 alarm fitted. Outside, there is an electric supply and a water tap.

Location

Impington is an attractive and ever popular village conveniently situated approximately 3 miles north of Cambridge. Wide ranging shopping facilities are provided by the adjoining village of Histon, together with several pubs, a coffee shop.

Impington Village College provides excellent educational facilities up to the age of eighteen and there are two primary schools in Histon. In addition the property is well placed for access to the A14 and M11. The Guided Busway (running from Huntingdon Railway Station to Trumpington Park & Ride), provides a direct link to Cambridge City centre, Cambridge Railway Stations and Addenbrooke's Hospital.

Services.

All mains services are connected.

Statutory Authorities.

South Cambridgeshire District Council
Tax band - C

Fixtures and Fittings.

Unless specifically mentioned in these particulars all fixtures and fittings are expressly excluded from the sale of the freehold interest.

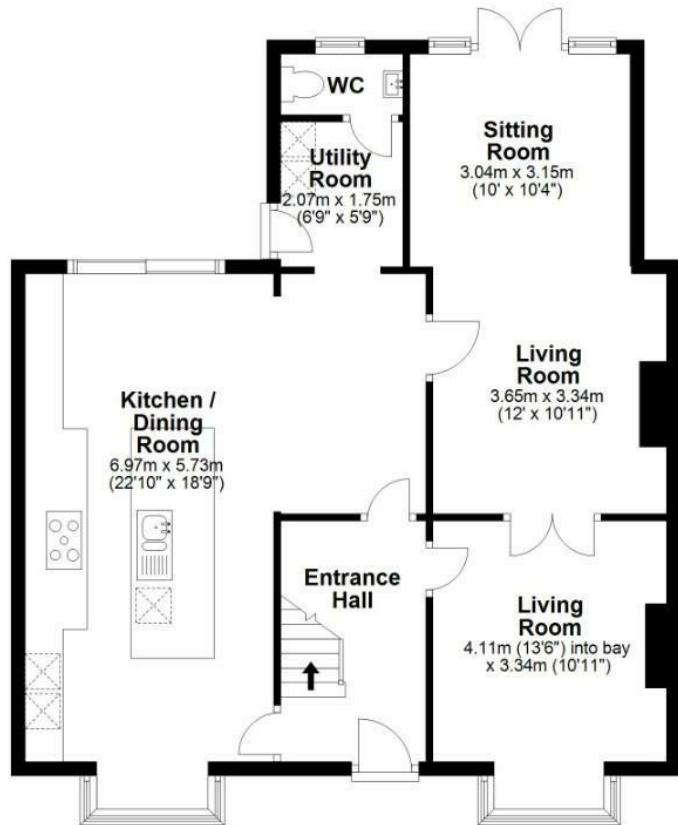
Viewing.

Strictly by appointment through the vendor's sole agents, Redmayne Arnold and Harris



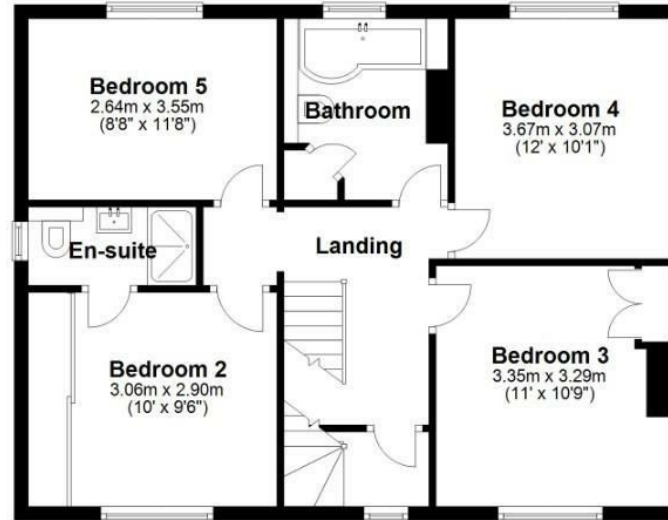


Ground Floor
Approx. 82.3 sq. metres (885.9 sq. feet)



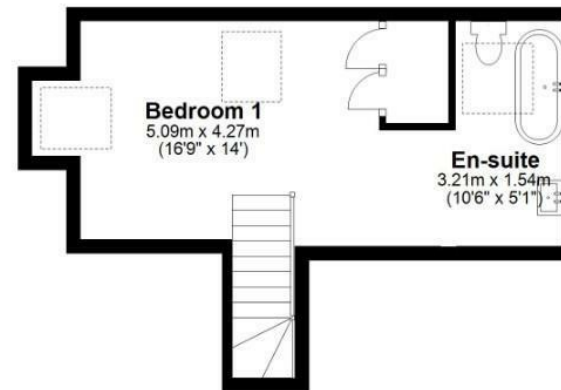
First Floor

Approx. 62.7 sq. metres (675.1 sq. feet)



Second Floor

Approx. 24.3 sq. metres (261.2 sq. feet)



Total area: approx. 169.3 sq. metres (1822.1 sq. feet)

Drawings are for guidance only
Plan produced using PlanUp.

Energy Efficiency Rating		
	Current	Potential
Very energy efficient - lower running costs		
(92 plus) A		
(81-91) B		
(69-80) C	73	81
(55-68) D		
(39-54) E		
(21-38) F		
(1-20) G		
Not energy efficient - higher running costs		
England & Wales	EU Directive 2002/91/EC	

These sales particulars do not constitute, nor constitute any part of, an offer or contract. If there is any matter which is of particular importance to you or if you wish to make an appointment to view please contact our office prior to undertaking travel. We have not carried out a detailed survey, nor tested the services, appliances and specific fittings.



