

A photograph of a two-story white stone building, likely a lodge, with a bay window and a sign that says "THE LODGE". The building has a grey roof and several chimneys. The bay window is on the ground floor, and there are three windows on the upper floor. The building is surrounded by a green lawn and a gravel path. In the background, there are other houses and trees under a blue sky with some clouds.

EDEN MIDCALF
— SALES & LETTINGS —

£495,000
High Street
Kingswinford, DY6 8AA

PROPERTY SUMMARY

A wonderful refurbished Grade II listed semi-detached family house enjoying a convenient location just a short walk from the heart of Kingswinford and its excellent amenities. Built around 1750, the property offers an impressively spacious layout, which retains much of its original character, including windows, doors and lovely high ceilings. The property has been re-wired and re-plumbed, including a brand new Ideal combination central heating boiler. Set back beyond a large frontage, the property includes plenty of off-road parking, together with a fantastic sized and attractively laid out rear garden, with an additional enclosed parking space to the rear, ideal for housing a caravan or motor home.

3



1



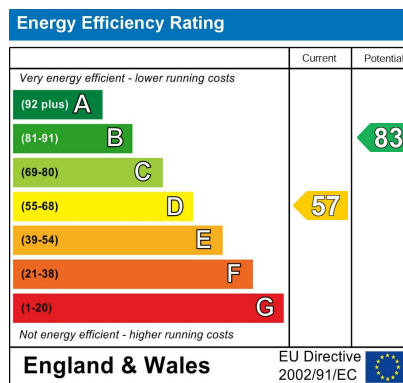
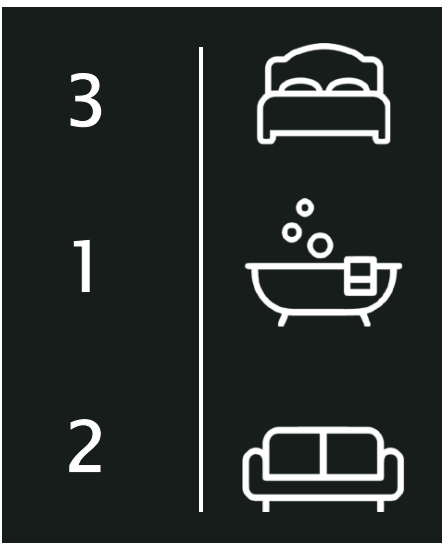
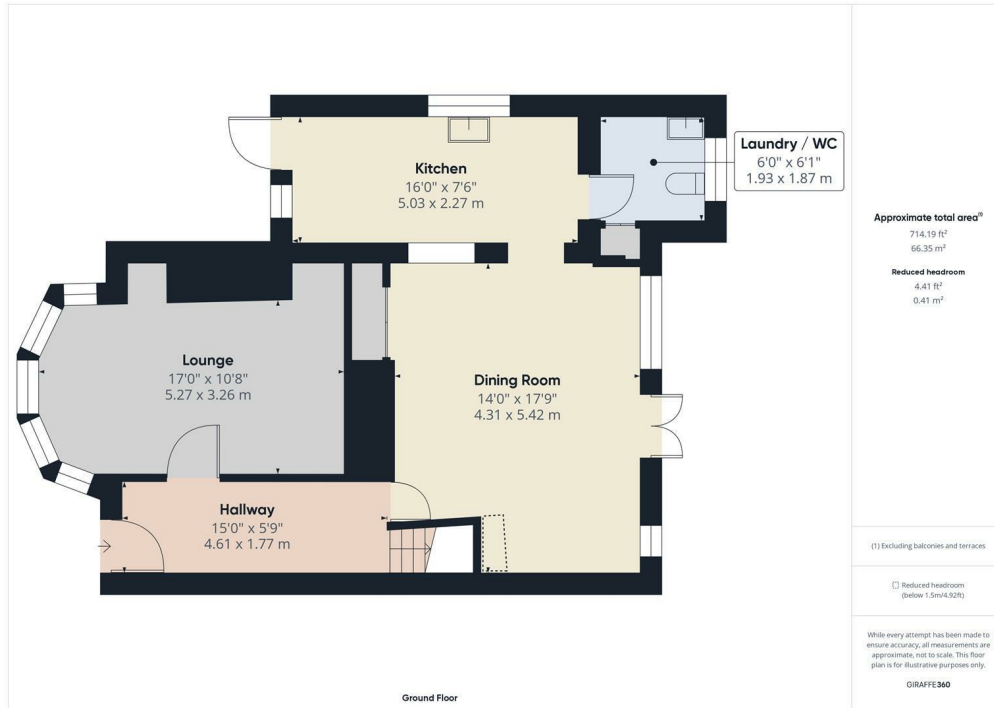
2











Agents Note: Whilst every care has been taken to prepare these particulars, they are for guidance purposes only. All measurements are approximate and are for general guidance purposes only and whilst every care has been taken to ensure their accuracy, they should not be relied upon and potential buyers/tenants are advised to recheck the measurements

| | | |
|---|---|---|
| <p>EDEN MIDCALF SALES & LETTINGS</p> | <p>42 Hagley Road Stourbridge DY8 1QD</p> | <p>01384 443434 https://www.edenmidcalf.co.uk/cor-us/</p> |
|---|---|---|