



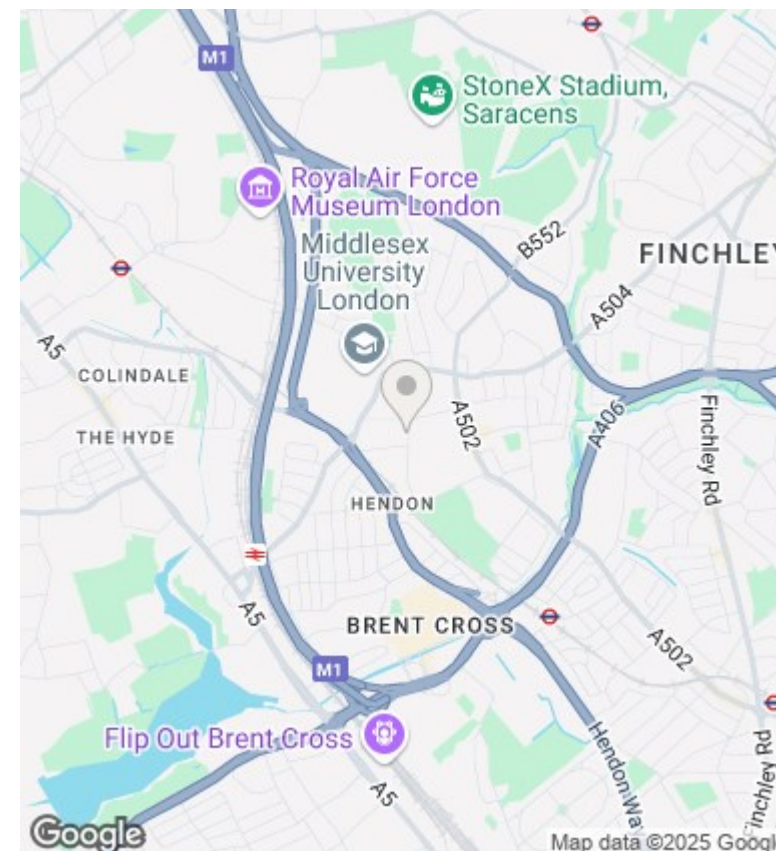
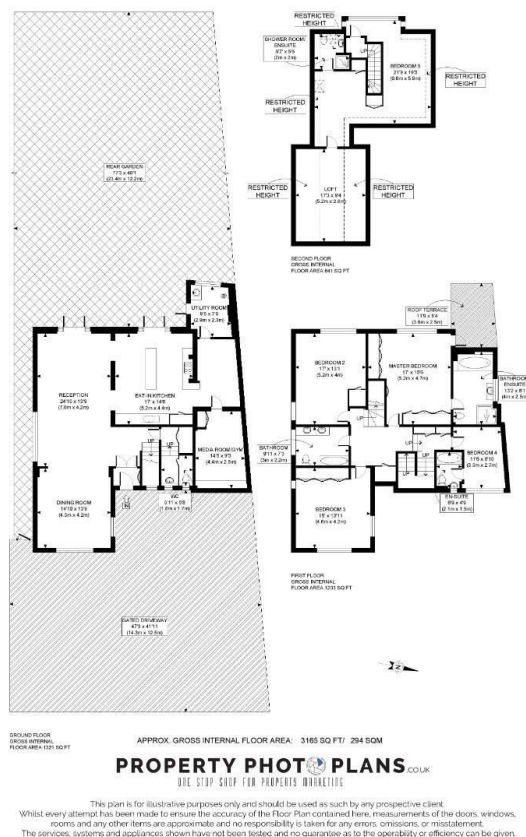
THE ESTATE COMPANY



Wykeham Road, Hendon, London, NW4 2ST

£2,395,000

- DETACHED
- 3165 Sq Ft
- 77Ft MATURE REAR GARDEN
- FIVE BEDROOMS - FOUR BATHROOMS
- GATED
- THREE RECEPTION ROOMS
- OFF STREET POARKING FOR SEVERAL CARS



Directions

Viewings

Viewings by arrangement only. Call 020 7372 5000 to make an appointment.

Council Tax Band

C

EPC Rating:

D

Energy Efficiency Rating		
	Current	Potential
Very energy efficient - lower running costs		
(92-plus) A		
(81-91) B		75
(69-80) C		
(55-68) D	55	
(39-54) E		
(21-38) F		
(1-20) G		
Not energy efficient - higher running costs		
England & Wales	EU Directive 2002/91/EC	