



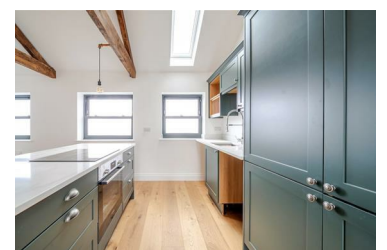
## 6A Bedford Road, Tunbridge Wells, TN40HJ Offers Over £250,000



Located on Bedford Road in the charming area of Southborough, Tunbridge Wells, this delightful new build flat offers a perfect blend of modern living and convenience. Spanning an impressive 565 square feet, this conversion flat is designed to cater to the needs of contemporary lifestyles.

Upon entering, you are welcomed into a spacious reception room that provides a warm and inviting atmosphere, ideal for both relaxation and entertaining. The flat features one well-proportioned bedroom, ensuring a comfortable retreat at the end of the day. The bathroom is thoughtfully designed, showcasing modern fixtures and fittings that enhance the overall appeal of the property.

As a new build completed in 2025, this flat boasts the latest in construction standards and energy efficiency, providing peace of mind for prospective buyers or renters. The property is situated in a desirable location, offering easy access to local amenities, transport links, and the picturesque



- Spacious 1- 2 bedroom flat
- Bright reception room
- Located on Bedford Road
- Easy access to transport
- Stylish conversion flat
- Modern new build design
- Contemporary bathroom suite
- Close to local amenities
- Ideal for first-time buyers
- Viewing highly recommended